



1 Fairfield Close, Hythe  
£409,950



ANTHONY JAMES  
PROPERTIES



# 1 Fairfield Close

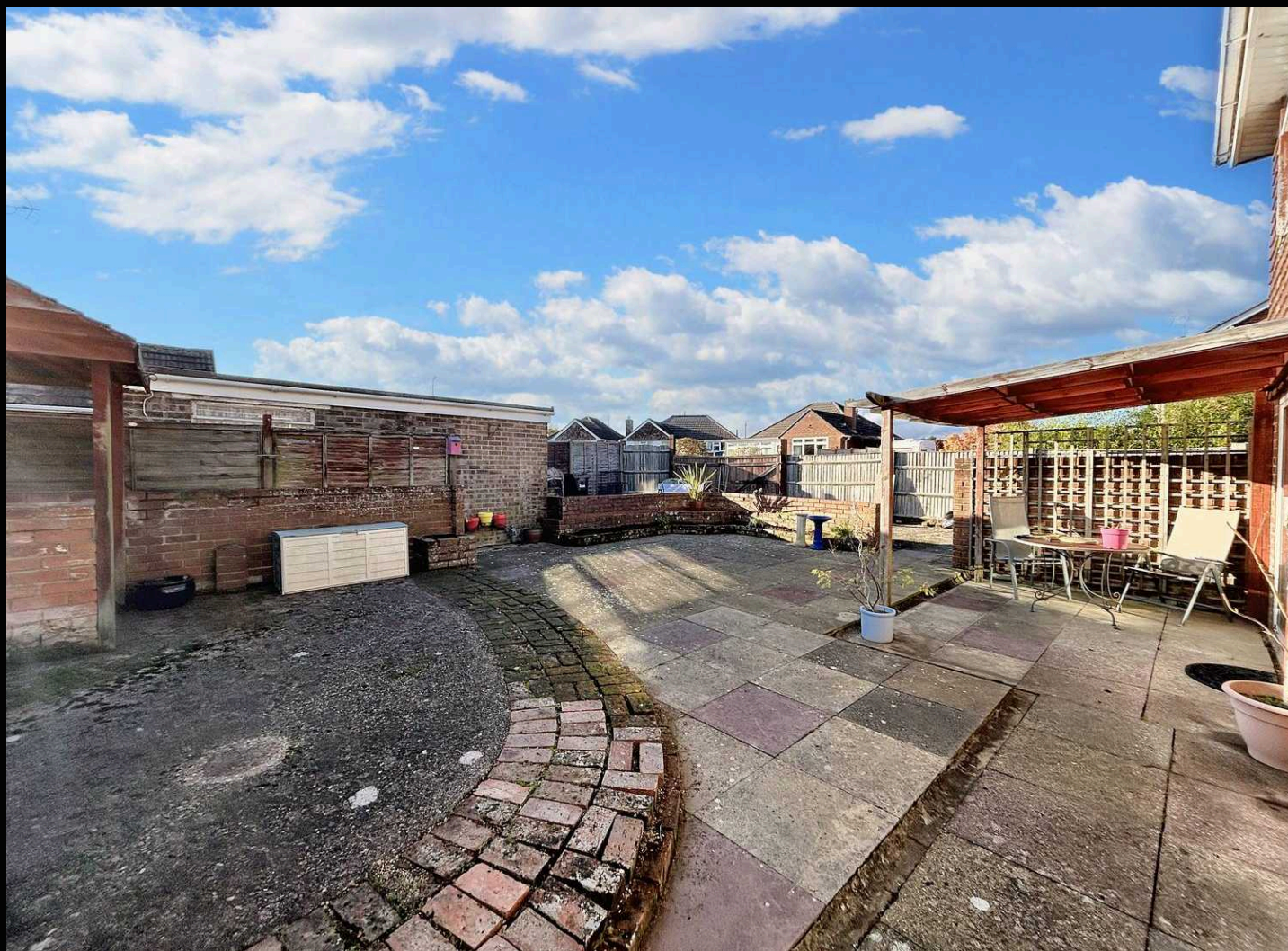
Hythe, Southampton

This detached house presents a wonderful opportunity for those seeking a property with potential to extend. Offered with no chain, the residence boasts a large open plan lounge/dining room, a rear aspect kitchen, ground floor WC, family bathroom, and three bedrooms. The property also benefits from a generous rear garden, driveway, and garage. With fantastic scope to expand, this property is perfect for buyers looking to create their dream home in a desirable location.

Outside, the property features a spacious frontage mainly laid to lawn, with a timber gate leading to the front door. Gates on either side provide access to the rear garden, a low maintenance space perfect for relaxing or entertaining. The garden offers ample room for extension to the rear or side. Double gates open to the driveway and garage, providing secure off-road parking. Don't miss out on the opportunity to make this property your own and enjoy the convenience of ample outdoor space in a sought-after area.

Council Tax band: D

Tenure: Freehold



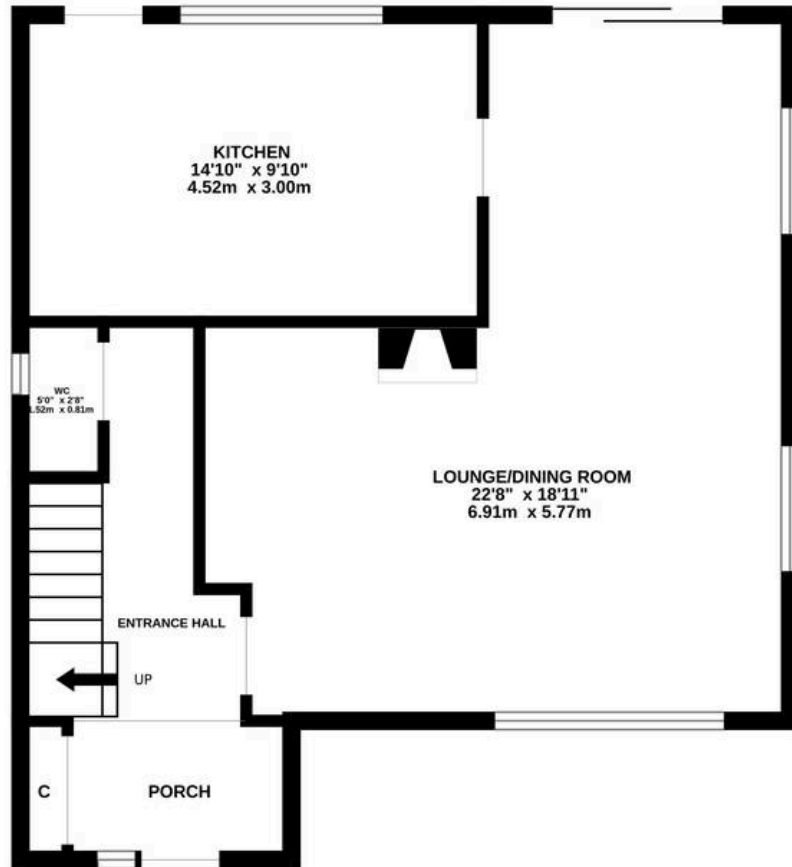
1 Southward House  
Dibden Purlieu SO45 4PT



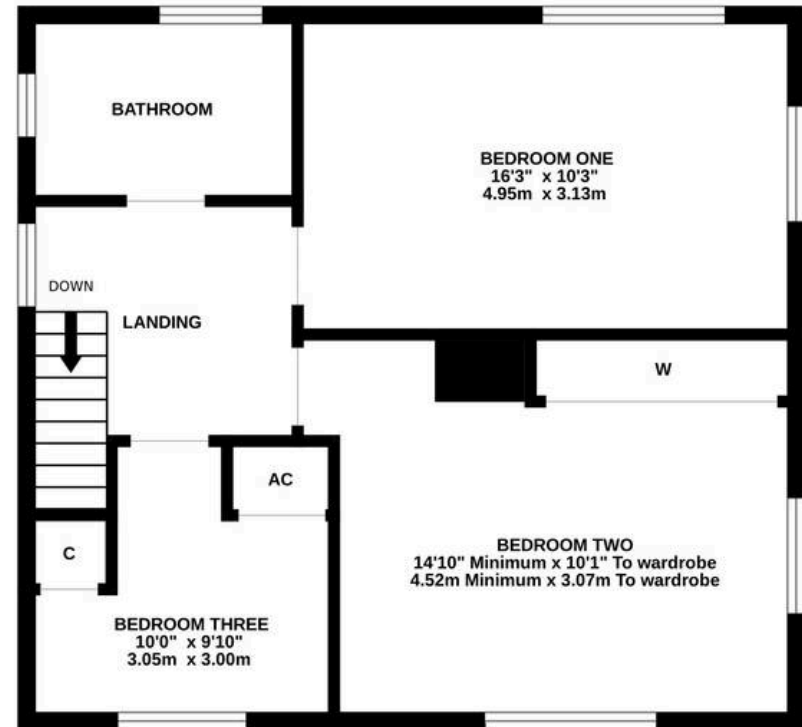
T: 02380 844405  
info@anthonyjamesproperties.co.uk



GROUND FLOOR  
593 sq.ft. (55.1 sq.m.) approx.



1ST FLOOR  
554 sq.ft. (51.5 sq.m.) approx.



TOTAL FLOOR AREA : 1147 sq.ft. (106.5 sq.m.) approx.

Whilst every attempt has been made to ensure the accuracy of the floorplan contained here, measurements of doors, windows, rooms and any other items are approximate and no responsibility is taken for any error, omission or mis-statement. This plan is for illustrative purposes only and should be used as such by any prospective purchaser. The services, systems and appliances shown have not been tested and no guarantee as to their operability or efficiency can be given.

Made with Metropix ©2024