



368 London Road South, Lowestoft  
£475,000

# 368 London Road South

Lowestoft, Lowestoft

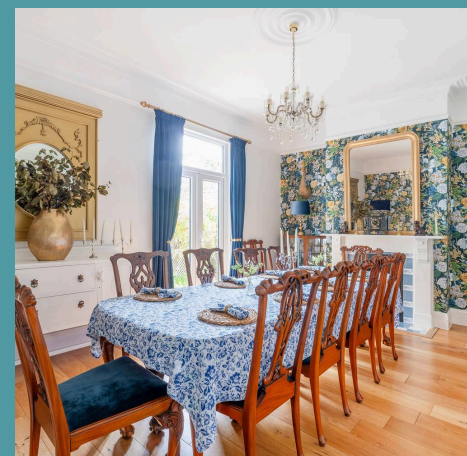
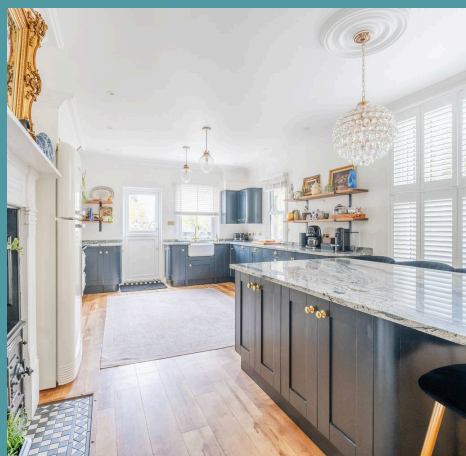
Situated a stone's throw away from the coastline of Lowestoft sits this exquisite terraced house, boasting a prime location within reach of the award-winning beach. It presents a unique opportunity for those interested in a profitable holiday let investment or for those looking to create a beautiful and welcoming family home. Don't miss the chance to acquire this stunning residence and experience all it has to offer.

Council Tax band: C

Tenure: Freehold

EPC Energy Efficiency Rating: C

EPC Environmental Impact Rating:





## 368 London Road South

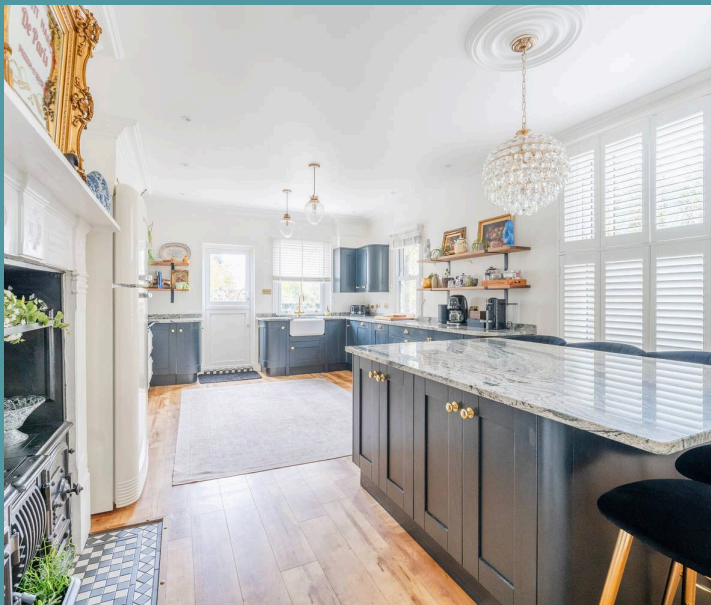
Lowestoft, Lowestoft

Situated a stone's throw away from the coastline of Lowestoft sits this exquisite terraced house, boasting a prime location within reach of the award-winning beach. It presents a unique opportunity for those interested in a profitable holiday let investment or for those looking to create a beautiful and welcoming family home. Don't miss the chance to acquire this stunning residence and experience all it has to offer.

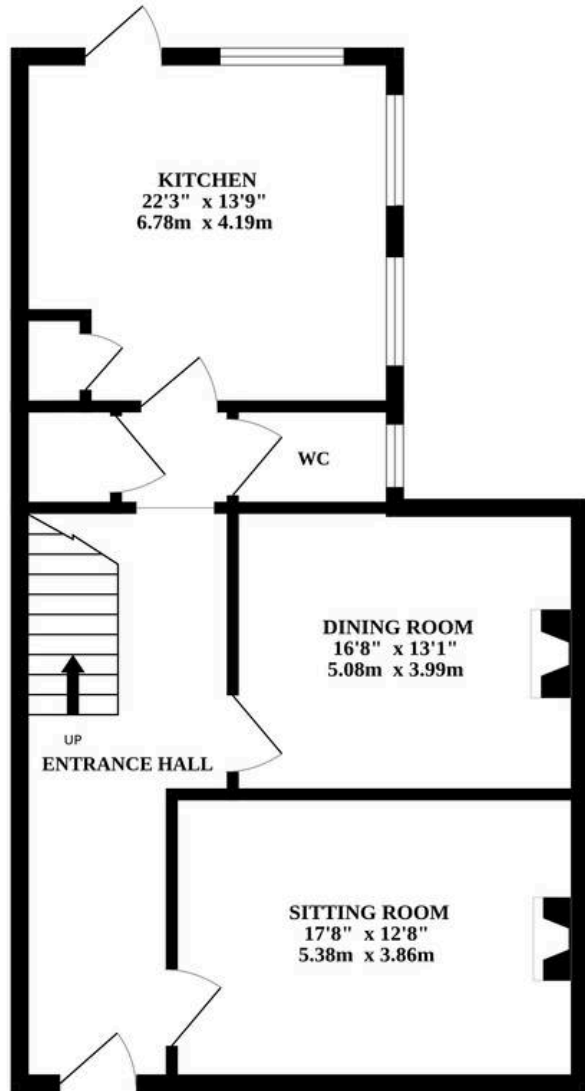
### LOCATION

This home is located on the most easterly point of the British Isles, in the traditional seaside town of Lowestoft. This wonderful seaside destination is steeped in history and offers a delightful blend of coastal allure and urban convenience. With its Blue Flag award-winning sandy beaches, Victorian seafront gardens and two charming piers, residents are treated to strolls along the shore and tranquil moments amidst nature's beauty. There are a number of schools in the area to suit all ages, a range of amenities including a Post Office, Bus Station and Train Station, which both run regular services to Norwich and plenty of shopping facilities and restaurants.

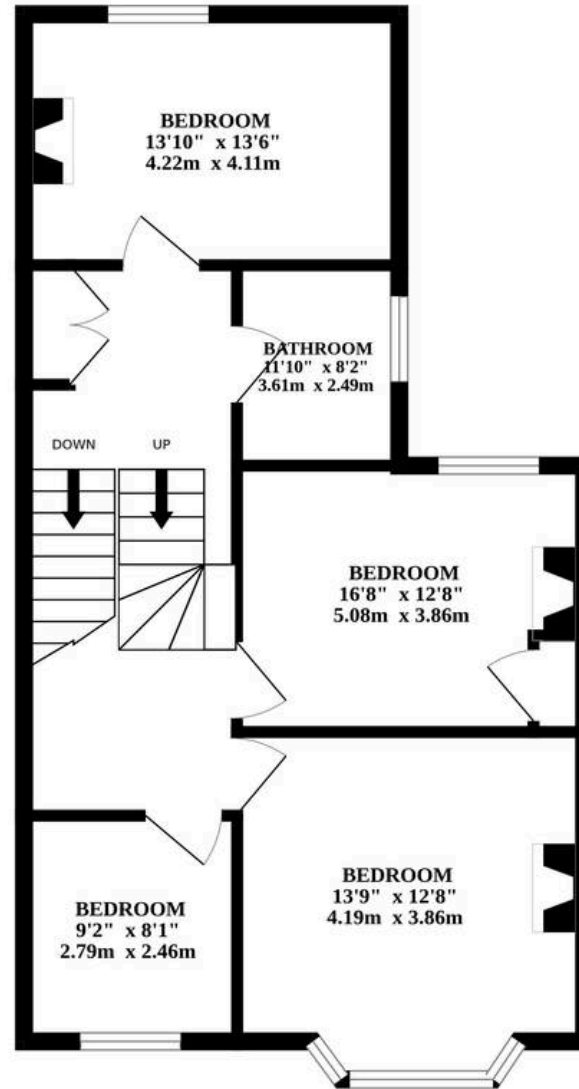
To the south, Lowestoft borders Kessingland, a quieter seaside village, known for its natural beauty and the Suffolk Coast and Heaths Area of Outstanding Natural Beauty. Just to the west of Lowestoft lies Beccles, a charming market town by the River Waveney, offering picturesque surroundings and a peaceful atmosphere. Further to the South, the town of Southwold, famous for its pier, historic lighthouse, and sandy beaches, is a



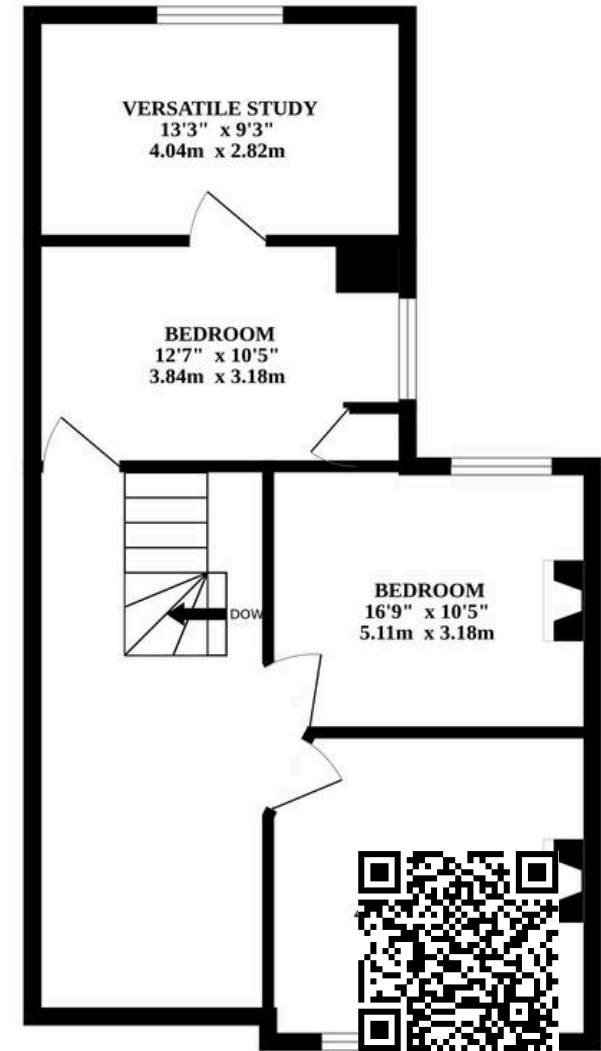
GROUND FLOOR



1ST FLOOR



2ND FLOOR



Whilst every attempt has been made to ensure the accuracy of the floorplan contained here, measurements of doors, windows, rooms and any other items are approximate and no responsibility is taken for any error, omission or mis-statement. This plan is for illustrative purposes only and should be used as such by any prospective purchaser. The services, systems and appliances shown have not been tested and no guarantee as to their operability or efficiency can be given.  
 Made with Metropix ©2024