



Chilterns Farm | West Chiltington Road | Storrington | RH20 4BP





Chilterns Farm

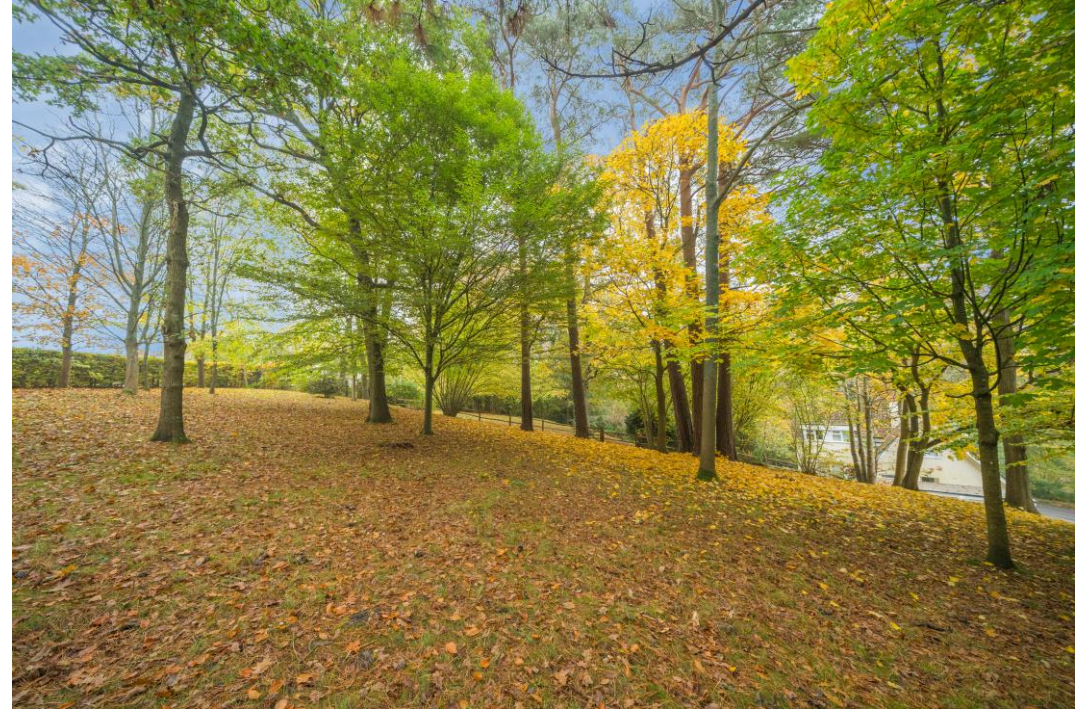
West Chiltington Road | Storrington | West Sussex | RH20 4BP

£1,850,000

(Lot 1): A substantial landmark property of Storrington delightfully located within this superb elevated position offering stunning views, set within 3.6 acres with the main residence offering potential commercial multi-use with internal accommodation for the main house, incorporating a first floor annexe extending to 6528 sqft. There is also a snooker room, original 1970's bar and entertainment area accessing the dual aspect balcony which has a spiral staircase leading outside to the terrace. Ground floor accommodation comprises: three receptions, four ground floor bedrooms, one en-suite bathroom and a family bathroom. Outside, there are beautiful landscaped gardens and terrace offering stunning views. The property is accessed via a private driveway with a two bedroom detached cottage and garage at its entrance, leading to extensive driveway parking and integral four bay detached garaging. No forward chain.

- Substantial Landmark Property
- Occupying 3.6 acres
- Incorporating 3 Bedroom 1st Floor Annexe
- Commercial Multi-use Potential
- Impressive Reception Hall with Sweeping Staircase
- Three Ground Floor Receptions
- Four Ground Floor Bedrooms with One En-suite
- Family Bathroom
- Open plan First Floor Entertainment Area
- Original 1970's Bar and Snooker Room
- Dual Aspect First Floor Balcony
- Loft Storage of 84' x 16'
- Beautiful Landscaped Gardens and Terrace
- Integral Four Bay Garage
- Extensive Parking area
- Detached Two Bedroom Cottage and Garage





Entrance Solid wood double doors leading to:

Enclosed Entrance Porch Radiator, part glazed door to:

Reception Hall 26' 11" x 15' 4" (8.2m x 4.67m)

Sitting Room 26' 5" x 15' 4" (8.05m x 4.67m) Ornamental fire surround with marble hearth and inset, sliding twin set of patio doors leading to terrace and gardens, opening to:

Dining Room 16' 10" x 15' 0" (5.13m x 4.57m) Dual aspect with sliding patio doors leading to terrace and gardens.

Kitchen/Breakfast Room 33' 3" x 9' 1" (10.13m x 2.77m) Extensive range of wall and base units, inset stainless steel one and a half bowl single drainer sink unit with range of working surfaces with inset four ring hob and hot plate with extractor over, integrated stainless steel fan assisted oven and separate grill, breakfast bar and built-in storage cupboards, dumb waiter lift, door to:

Utility Room 21' 4" x 6' 8" (6.5m x 2.03m) Stainless steel single drainer sink unit with space and plumbing for washing machine and tumble dryer, sliding built-in storage cupboards, door accessing garage.

Inner Courtyard Door to:

Boiler Room Housing oil fired central heating boiler.

Walk-In Wine Cellar 14' 0" x 6' 9" (4.27m x 2.06m)

Ground Floor Cloakroom Low level flush w.c., wall-mounted vanity unit, built-in sliding cloaks cupboard.

Ground Floor Study 15' 2" x 12' 6" (4.62m x 3.81m) Pseudo pine panelled walls, sliding French doors leading to terrace.

Inner Hallway Sliding built-in storage cupboards, airing cupboard.

Ground Floor Main Bedroom 20' 1 maximum" x 18' 1" (6.12m x 5.51m) Twin set of built-in sliding wardrobe cupboards, sliding double glazed French doors leading to wrought iron balcony, door to:

En-Suite Inset bath with fitted independent shower attachment, fully tiled walls, inset wash hand basin with toiletries cupboards under, radiator, bidet, low level flush w.c., separate enclosed shower with independent shower unit.

Ground Floor Bedroom Two 15' 2" x 12' 6" (4.62m x 3.81m) Built-in wardrobe cupboards.

Ground Floor Bedroom Three 15' 2" x 14' 0" (4.62m x 4.27m) Built-in wardrobe cupboards.

Ground Floor Bedroom Four 12' 6" x 12' 0" (3.81m x 3.66m) Built-in wardrobe cupboards.

Bathroom Inset bath with separate shower cubicle, inset wash hand basin, low level flush w.c., bidet.

Impressive Aluminium Split Staircase Impressive galleried landing with reception area and louvered folding doors leading to:

Original 1970's Bar Area 20' 0 maximum" x 16' 6 maximum" (6.1m x 5.03m) Opening to:

Entertainment Area 26' 2" x 17' 5" (7.98m x 5.31m) Radiators, patio with wrought iron balcony and external spiral staircase leading to large terrace overlooking gardens.

Second Reception Area/Snooker Room 29' 5" x 23' 0 maximum" (8.97m x 7.01m) Large padded seating area, door accessing:

Bedroom/Games Room 15' 8" x 13' 6" (4.78m x 4.11m) Built-in wardrobe cupboards, walk-in eaves storage area, access to loft space which measures 84' x 16', double glazed windows.

First Floor Cloakroom Low level flush w.c., wash hand basin.

First Floor Cloakroom (Non-functional)

Inner Hallway Cupboard opening to dumb waiter lift, walk-in storage area, door accessing:

SEPARATE WING OF THE PROPERTY/ANNEXE

Sitting Room 21' 4" x 12' 0 maximum" (6.5m x 3.66m) Radiator, double glazed windows.

Kitchen 10' 4" x 7' 6" (3.15m x 2.29m) Range of pine base and wall units, built-in fan assisted electric oven and four ring hob with extractor over, space and plumbing for washing machine, double glazed window.

Bedroom One 17' 5" x 12' 0" (5.31m x 3.66m) Radiator, double glazed window.

Bedroom Two 12' 8" x 9' 10" (3.86m x 3m) Radiator, double glazed window.

Reception Room/Dining Room/Bedroom Three 10' 3" x 9' 10" (3.12m x 3m) Radiator, double glazed window.

Bathroom Panelled bath with fitted shower attachment, pedestal wash hand basin.

Separate WC Low level flush.

Stairway Leading down to:

Self-Contained Ground Floor Entrance Understairs storage and storage cupboard.

Outside

Four Bay Integral Garage 37' 1" x 21' 0" (11.3m x 6.4m) Automatic up and over doors, with rear single garage door opening onto gardens, power and light, housing electric meters.

Private Driveway Leading to extensive parking area with overall grounds extending to 3.6 acres, steps up to:
Area of Woodland Gardens Mature trees and shrubbery, screened by hedging.

South Aspect Landscaped Front Garden Feature paved stone terrace with delightful outlook over gardens and landscaped ornamental rockery and pond, further side terrace with stairs accessing balcony.

SEPARATE DETACHED COTTAGE

(Keepers Cottage) Located at the front of the driveway.

Entrance Double glazed front door to:

Entrance Hall Walk-in understairs storage cupboard, radiator, electric meters.

Kitchen 9' 2" x 7' 0" (2.79m x 2.13m) Range of wall and base units with stainless steel single drainer sink unit, laminate working surfaces, space for cooker.

Ground Floor Shower Room Low level flush w.c., pedestal wash hand basin, separate enclosed shower cubicle with wall-mounted boiler.

Sitting Room/Dining Room 32' 5 maximum" x 14' 8 maximum" (9.88m x 4.47m) Feature stone open fireplace, three radiators, sliding double glazed doors leading to Juliet balcony, sliding double glazed doors leading to patio and gardens.

Stairs to:

First Floor Landing

Main Bedroom 24' 1 maximum" x 10' 9 maximum" (7.34m x 3.28m) Triple aspect with double glazed windows, door leading to:

En-Suite Bathroom Panelled bath, pedestal wash hand basin, low level flush w.c., fully enclosed shower cubicle, built-in shelved linen cupboard.

Bedroom Two 10' 4 maximum" x 10' 0 maximum" (3.15m x 3.05m) Radiator, built-in storage cupboard, eaves storage cupboard, access to loft space.

Outside

Attached Single Garage 18' 8" x 8' 8" (5.69m x 2.64m) Metal up and over door, sink, side door access.

Rear Garden Paved patio area with steps up to lawned area, enclosed by mature trees and shrubs and fencing, outside tap. Please note the Cottage runs on separate Propane tanks.

EPC Rating: Band E - Main House

EPC Rating: Band F - Keepers Cottage

West Chiltington Road, Storrington, Pulborough, RH20

Approximate Area = 5347 sq ft / 496.7 sq m

Limited Use Area(s) = 440 sq ft / 40.9 sq m

Loft Storage = 924 sq ft / 85.8 sq m

Garage = 780 sq ft / 72.5 sq m

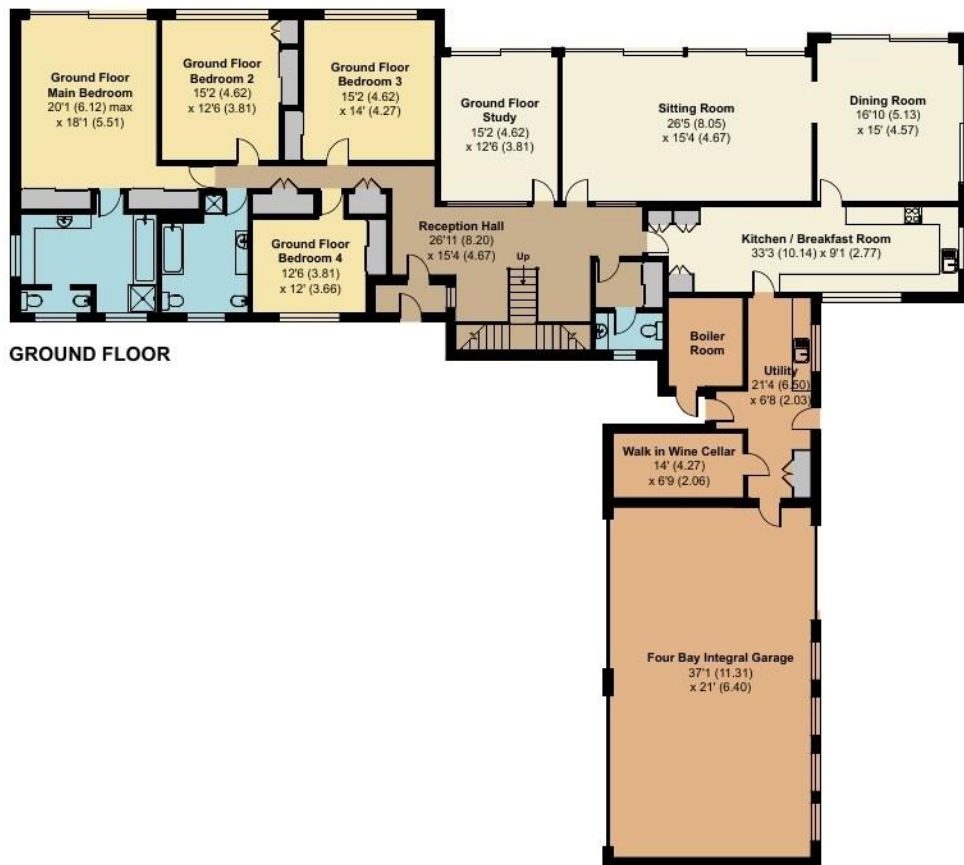
Annexe = 1181 sq ft / 109.7 sq m

Total = 8672 sq ft / 805.6 sq m

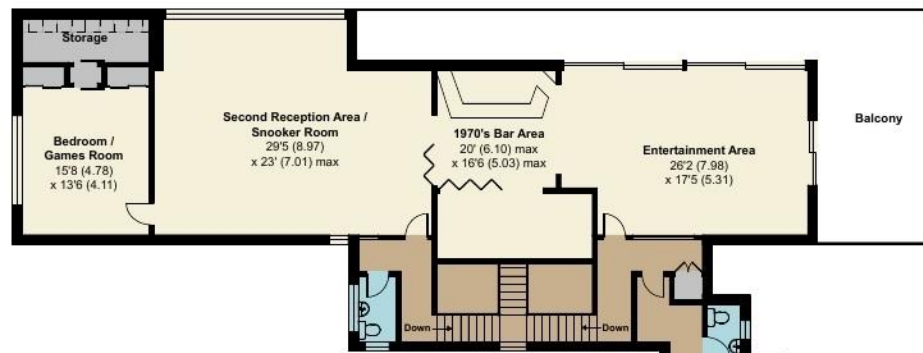
For identification only - Not to scale



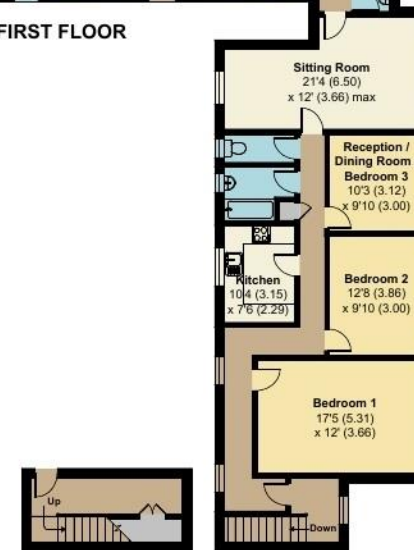
Denotes restricted head height



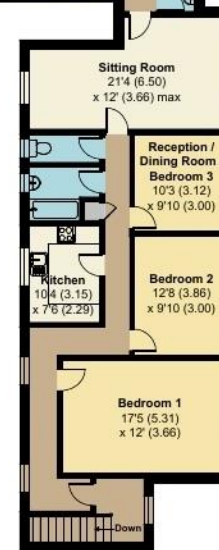
GROUND FLOOR



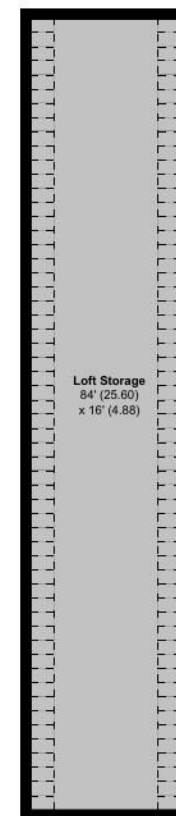
FIRST FLOOR



ANNEXE GROUND FLOOR



ANNEXE FIRST FLOOR



Loft Storage
84' (25.60)
x 16' (4.88)

*Floorplan - Main House
Lot 1*

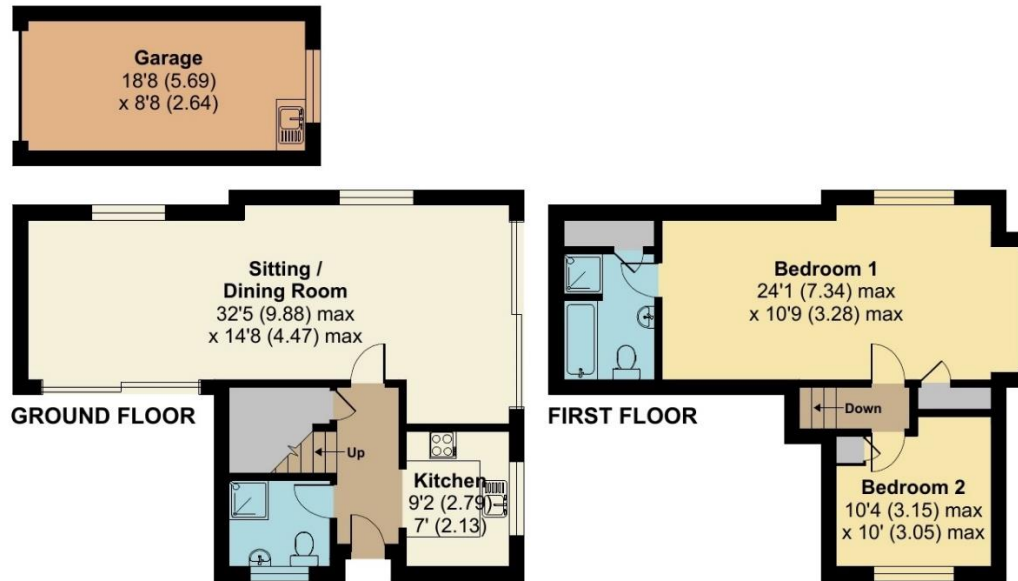
West Chiltington Road, Storrington, Pulborough, RH20

Approximate Area = 1087 sq ft / 101 sq m

Garage = 166 sq ft / 15.4 sq m

Total = 1253 sq ft / 116.4 sq m

For identification only - Not to scale



Floor plan produced in accordance with RICS Property Measurement 2nd Edition, Incorporating International Property Measurement Standards (IPMS2 Residential). © nichecom 2024. Produced for Fowlers Estate Agents. REF: 1214239

Floorplan – Keepers Cottage Lot 1



“We’ll make you feel at home...”



Fowlers Greenfield House, The Square, Storrington, West Sussex, RH20 4DJ

www.fowleronline.co.uk

storrington@fowleronline.co.uk

01903 745844

Managing Director:
Marcel Hoad MRICS

Important Notice

1. Fowlers wish to inform all prospective purchasers that these sales particulars do not form part of any contract and have been prepared in good faith to give a fair overall viewing of the property.
2. We have not undertaken a structural survey, nor tested that the services, appliances, equipment or facilities are in good working order.
3. Fowlers cannot verify that any necessary consents have been obtained for conversions, extensions and other alterations such as underpinning, garaging and conservatories etc.

Any reference to such alterations is not intended as a statement that any necessary planning or building consents have been obtained and if such details are fundamental to a purchase, then prospective buyers should contact this office for further information or make further enquiries on their own behalf.

4. Any area, boundary, distances or measurements referred to are given as a guide only and should not be relied upon. If such details are fundamental to a purchase, please contact this office for further information.

5. The photographs shown in these details show only certain aspects of the property at the time they were taken. Certain aspects therefore may have changed and it should not be assumed that the property remains precisely as displayed in the photographs.
6. Fowlers cannot verify whether the property and its grounds are subject to any restrictive covenants, rights of way, easements etc, and purchasers are advised to make further enquiries to satisfy themselves on these points.