



## Compayne Gardens, London NW6

£2,400 pcm

Welcome to Turret House, this stunning modern one bedroom apartment in NW6

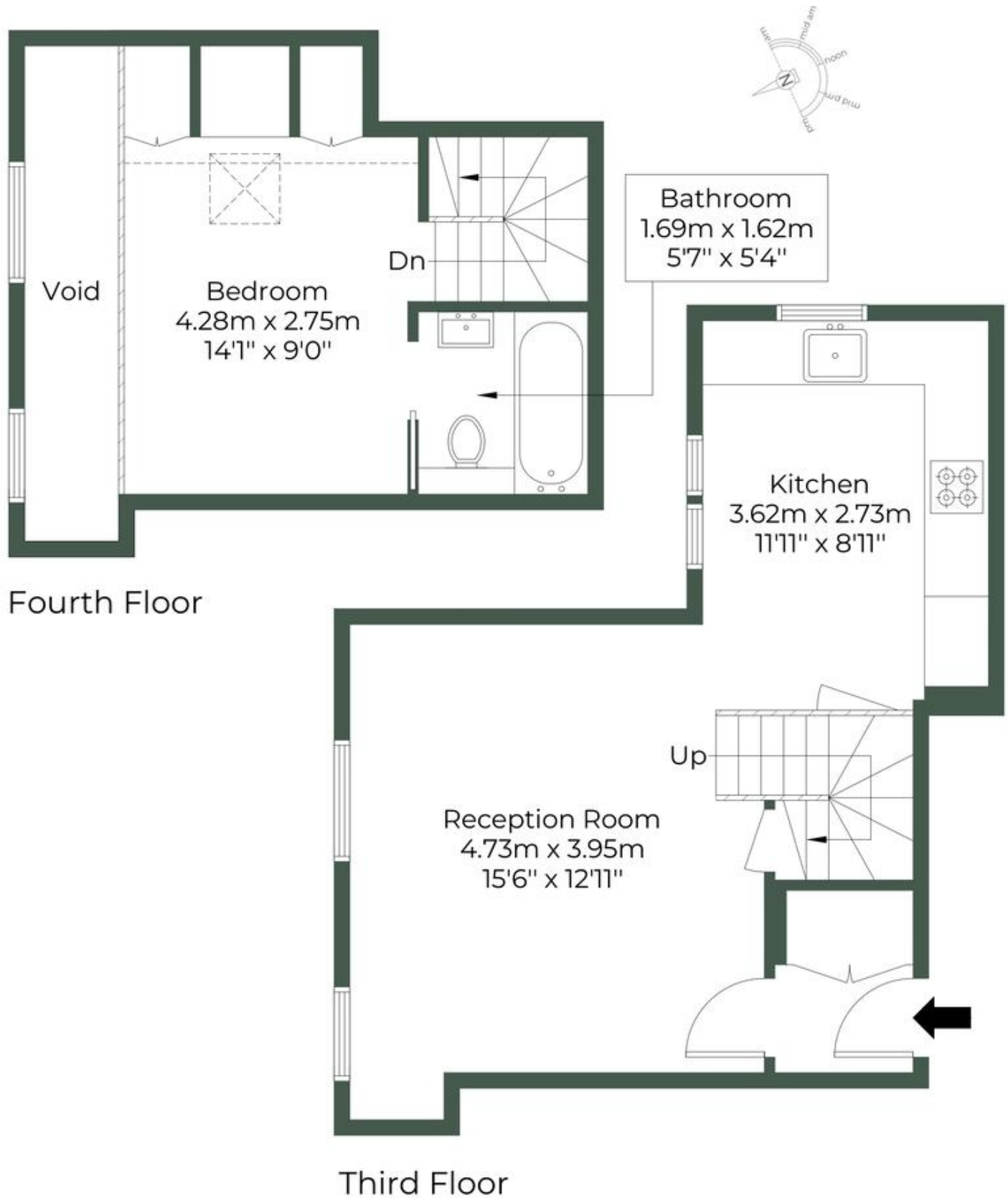
- One bedroom apartment
- Good condition
- Excellent Location
- Furnished or Unfurnished
- Secure residential block
- Abundance of natural light
- Bright and Airy
- Good transport links
- Available Now
- Viewing Recommended

# COMPAYNE GARDENS, NW6 3RU

Approximate Gross Internal Area = 46.2 sq.m / 497 sq.ft

Restricted head height = 2.7 sq.m / 29 sq.ft

Total = 48.9 sq.m / 526 sq.ft



M MILE

**MONEY LAUNDERING REGULATIONS 2003:** Intending purchasers will be asked to produce identification documentation at a later stage and we would ask for your co-operation in order that there will be no delay in agreeing the sale.

**General:** While we endeavour to make our sales particulars fair, accurate and reliable, they are only a general guide to the property and, accordingly, if there is any point which is of particular importance to you, please contact the office and we will be pleased to check the position for you, especially if you are contemplating travelling some distance to view the property.

**Measurements:** These approximate room sizes are only intended as general guidance. You must verify the dimensions carefully before ordering carpets or any built-in furniture.

**Services:** Please note we have not tested the services or any of the equipment or appliances in this property, accordingly we strongly advise prospective buyers to commission their own survey or service reports before finalising their offer to purchase.