



Wycombe Square

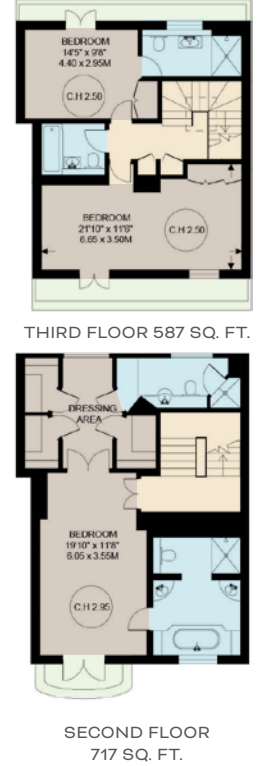
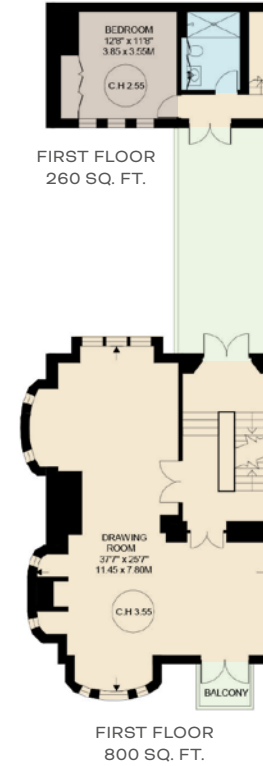
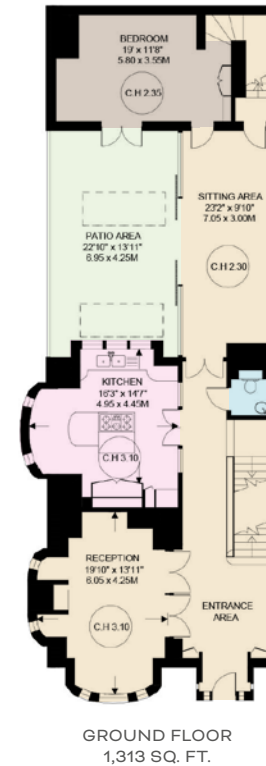
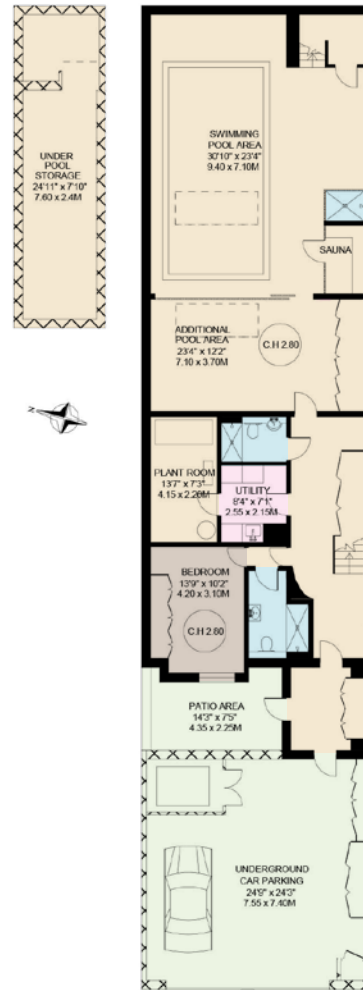
KENSINGTON W8



Overlooking an immaculate landscaped garden square, this impressive and beautifully presented six bedroom family house with grand proportions and quality finishings. The house offers the perfect balance between entertainment space and accommodation and on the lower ground it has its own private swimming pool. The house also benefits from two secure underground parking spaces which can be accessed directly from the house as well as 24 hour security and concierge.

Wycombe Square is a prestigious gated development completed in 2005 and is ideally situated for the open spaces of Holland Park and Kensington Gardens as well as the transport links of Notting Hill Gate (Central, District, Circle Lines).

PRICE: £10,500,000 TENURE: FREEHOLD

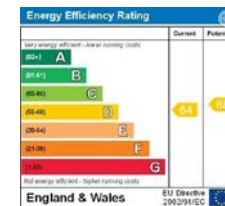


APPROX. INTERNAL FLOOR (LIVING) AREA: 5,403 SQ. FT / 501.9 SQ. M
 APPROX. ADDITIONAL AREAS: 864 SQ. FT / 80.2 SQ. M
 TOTAL AREAS SHOWN ON PLAN: 6,267 SQ. FT / 582.20 SQ. M

This floorplan is for GUIDANCE ONLY and NOT FOR VALUATION purposes.

FEATURES

- PRINCIPAL BEDROOM WITH HIS & HER BATHROOMS & DRESSING ROOM
- FIVE FURTHER DOUBLE BEDROOMS
- FIVE FURTHER SHOWER ROOMS
- DRAWING ROOM
- THREE RECEPTION ROOMS
- KITCHEN
- DINING ROOM
- SWIMMING POOL/GYM/ STEAM ROOM
- TWO SECURE UNDERGROUND PARKING SPACES
- TERRACES



www.nicolasvanpatrick.com

These details have been prepared for general guidance only and should not be relied upon by prospective purchaser/ tenants who before proceeding must check and otherwise satisfy themselves as to the property and the nature, state and availability of any facility or service.