



# 16 Woodville Court, Broxburn

Offers Over £175,000





# 16 Woodville Court

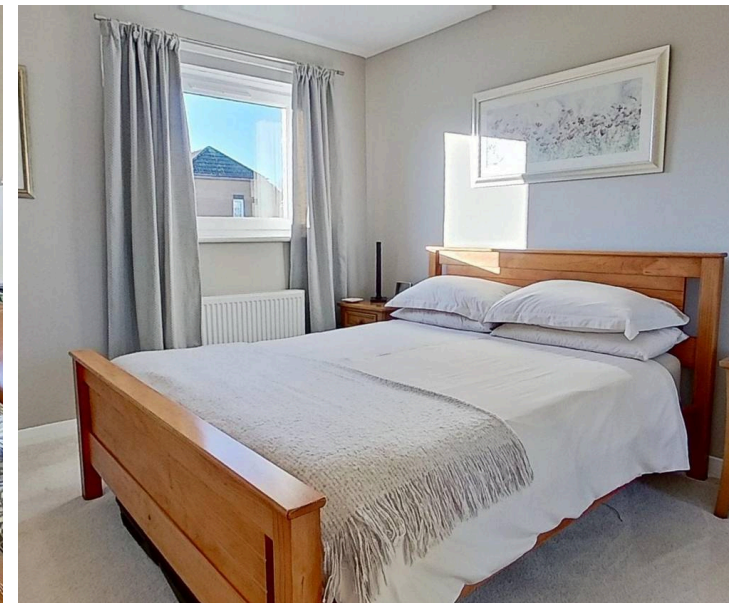
Broxburn

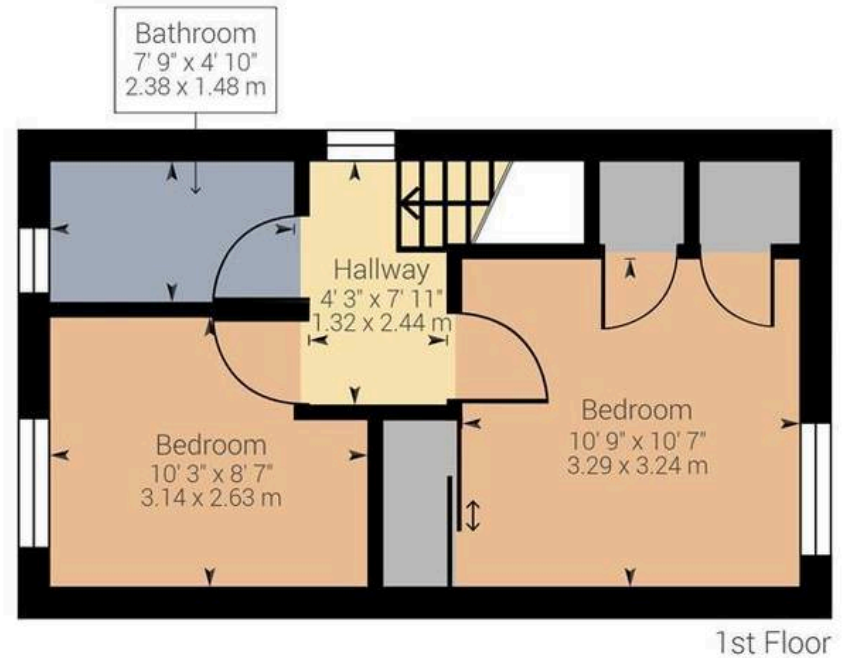
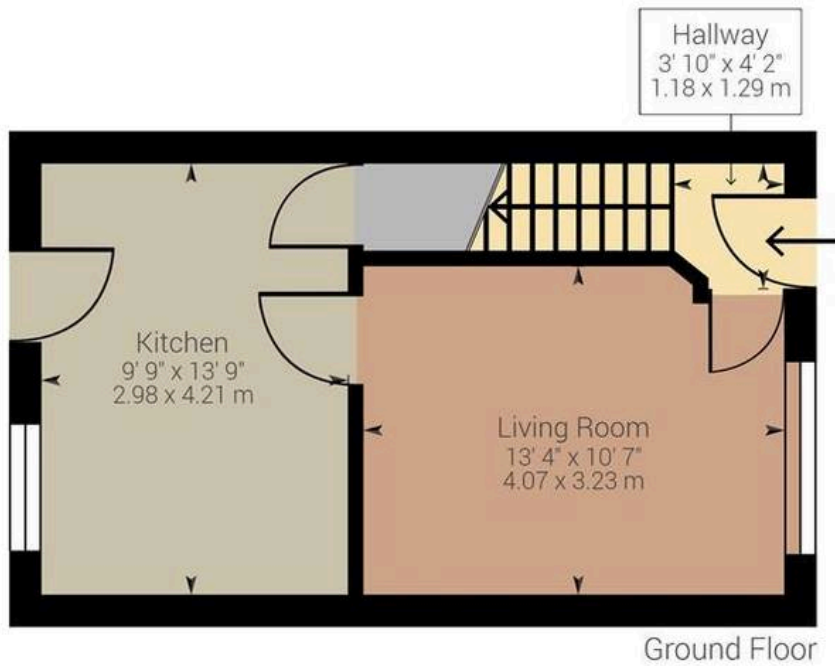
Stunning 2-bed semi-detached home in a cul-de-sac location. Modern kitchen/diner, luxury shower room, and charming garden summer house. Ideal for first-time buyers or families. Close to amenities and schools. Ultimate modern living with high-end finishes.

Council Tax band: D

Tenure: Freehold

- Two Bed Semi Detached House
- Located Within A Popular Cul-De-Sac Location
- True Move In Condition
- Ideal For First Time Buyer
- Contemporary Kitchen/Diner
- Modern Shower Room
- Single Driveway
- Fully Enclosed Rear Garden
- Garden Summer House
- Located Close To Local Amenities And Schooling





Approximate net internal area: 620.34 ft<sup>2</sup> / 57.63 m<sup>2</sup>

While every attempt has been made to ensure accuracy, all measurements are approximate, not to scale. This floor plan is for illustrative purpose only and should be used as such by any prospective tenant or purchaser.





## KnightBain Estate Agents

Knightbain, 4 Greendykes Road, Broxburn - EH52 5AG

01506 852000

[info@knightbain.co.uk](mailto:info@knightbain.co.uk)

[www.knightbain.co.uk/](http://www.knightbain.co.uk/)

