



17 Foley Road, Claygate
£3,500 pcm

DAVIES
PROPERTY PARTNERS

17 Foley Road

Claygate, Esher

Modern immaculately presented four double bedroom family home located on a popular tree lined road in the heart of Claygate. C.

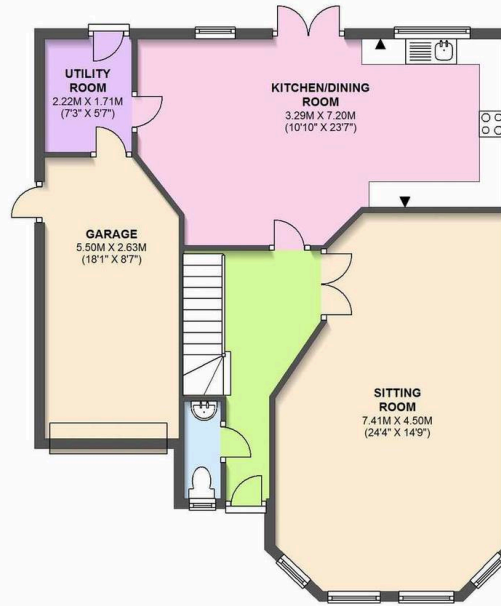
Council Tax band: G

- Double Garage
- Four Double Bedrooms
- Private Garden
- Detached House
- Available from 25th January
- Unfurnished
- Desirable road close to the Village

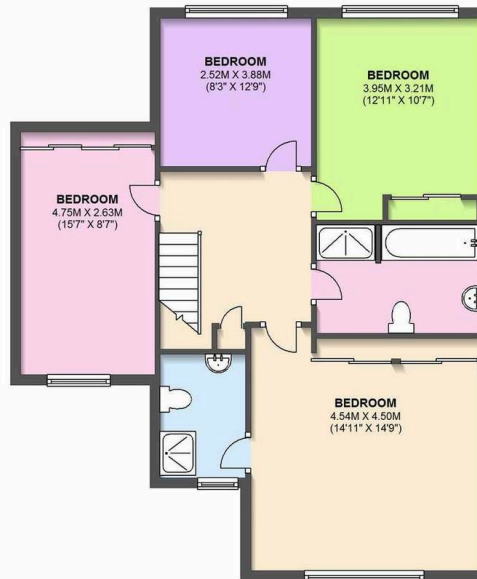




GROUND FLOOR
APPROX. 84.6 SQ. METRES (910.2 SQ. FEET)



FIRST FLOOR
APPROX. 79.0 SQ. METRES (850.9 SQ. FEET)



TOTAL AREA: APPROX. 163.6 SQ. METRES (1761.1 SQ. FEET)

All floor plans are provided for informational purposes only. Although we endeavour to provide truthful representation, we do not in any way warrant the accuracy of the floor plan information and the floor plan layout and measurements may contain errors or omissions. We are not liable for and do not accept any liability relating to any loss or damage suffered as a direct or indirect result of use of any information on our website. Plan produced using The Mobile Agent.