



20 Pineview Gardens, Littleover
£975 pcm





20 Pineview Gardens

Littleover, Derby

Council Tax band: C

Tenure: Leasehold

- Secure Access via key pad entry
- Open Plan Lounge / Kitchen / Diner
- Allocated Parking
- 2 Spacious Bedrooms with bed & Wardrobes
- Ensuite shower Room & Family Bathroom



Hallway

Hallway: Fitted flooring, Storage cupboard housing the recently fitted gas boiler, Consumer box, power & lighting. Fitted alarm panel. Doors leading to all rooms

Lounge

Lounge: Spacious open plan area with French doors leading out to the rear outside space, fitted flooring, 2 seater sofa, coffee table, glass tv unit, power & lighting,

Kitchen

Kitchen: open plan area with low level separation wall, ample storage: fitted grey units with integrated oven, hob & chimney style extractor hood, integrated washing machine, 450mm dishwasher, under counter fridge & under counter freezer. 1 ½ stainless sink & drainer with swan neck tap,

Diner Area

Dining Area: Open Plan Layout - Upvc window to the rear elevation, fitted flooring, round glass table and 4 chairs,

Bedroom 1

Bedroom 1: Upvc window over the front elevation, fitted flooring, built in wardrobe space, double bed & mattress with attached side units, door leading into the with En-suite shower room,

En-suite

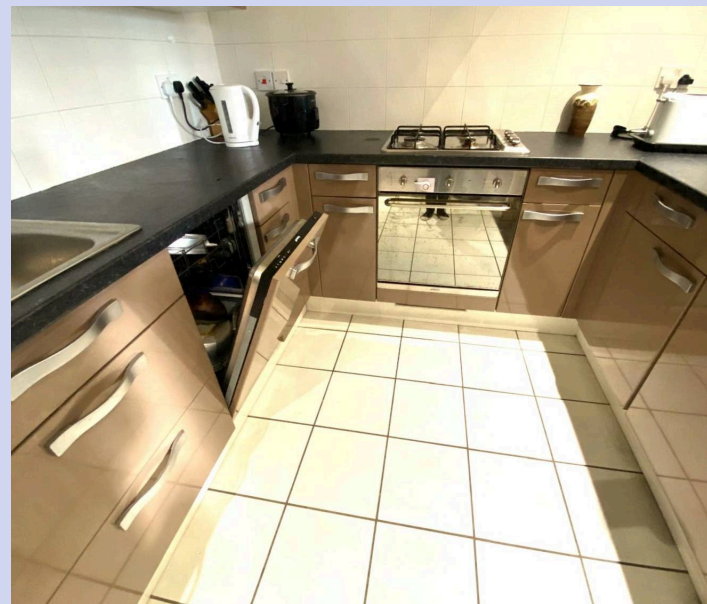
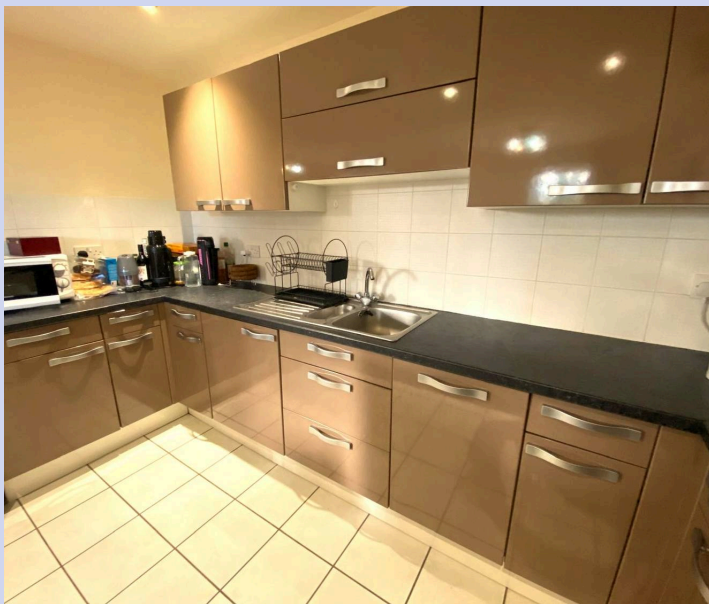
En- suite Shower Room comprising: walk in shower cubicle with mixer shower, sliding doors. Low level w/c, wall mounted vanity style sink, Mirror bathroom cupboard, Wall mounted white towel rail

Bedroom 2

Bedroom 2: Upvc window over the front elevation, double bed and mattress, fitted flooring, built in wardrobe space,

Family Bathroom

Family bathroom comprising: bath with shower over, bath screen. Low level w/c, pedestal sink, wall mounted towel rail,





Hallway

Hallway: Fitted flooring, Storage cupboard housing the recently fitted gas boiler, Consumer box, power & lighting. Fitted alarm panel. Doors leading to all rooms

Lounge

Lounge: Spacious open plan area with French doors leading out to the rear outside space, fitted flooring, 2 seater sofa, coffee table, glass tv unit, power & lighting,

Kitchen

Kitchen: open plan area with low level separation wall, ample storage: fitted grey units with integrated oven, hob & chimney style extractor hood, integrated washing machine, 450mm dishwasher, under counter fridge & under counter freezer. 1 ½ stainless sink & drainer with swan neck tap,

Diner Area

Dining Area: Open Plan Layout - Upvc window to the rear elevation, fitted flooring, round glass table and 4 chairs,

Bedroom 1

Bedroom 1: Upvc window over the front elevation, fitted flooring, built in wardrobe space, double bed & mattress with attached side units, door leading into the with En-suite shower room,

En-suite

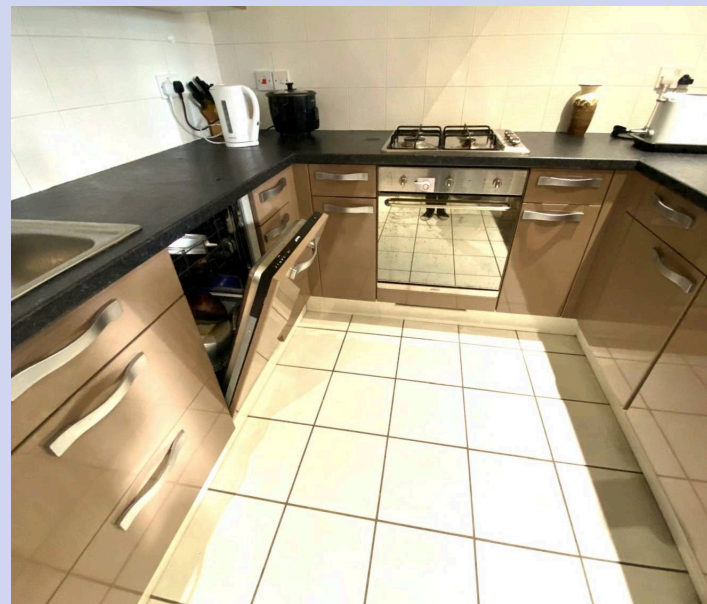
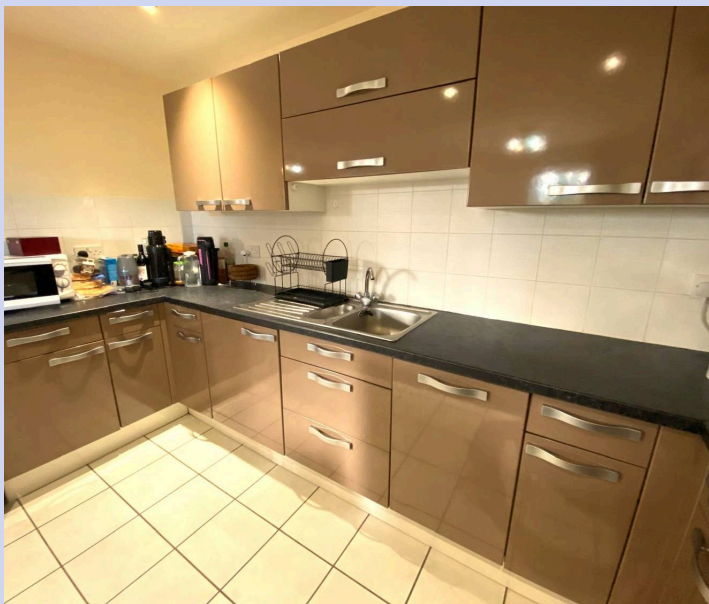
En- suite Shower Room comprising: walk in shower cubicle with mixer shower, sliding doors. Low level w/c, wall mounted vanity style sink, Mirror bathroom cupboard, Wall mounted white towel rail

Bedroom 2

Bedroom 2: Upvc window over the front elevation, double bed and mattress, fitted flooring, built in wardrobe space,

Family Bathroom

Family bathroom comprising: bath with shower over, bath screen. Low level w/c, pedestal sink, wall mounted towel rail,





GARDEN

Rear patio area surrounded by open plan lawn area

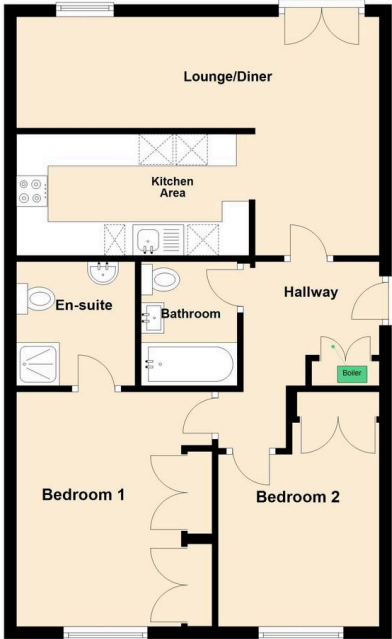
ALLOCATED PARKING

2 Parking Spaces

Parking space for 2 vehicles



Ground Floor





Eyelet Property

Hill Lodge Morley Road, Chaddesden - DE21 4QZ

01332 496315

info@eyeletproperty.co.uk

<http://www.eyeletproperty.com/>

