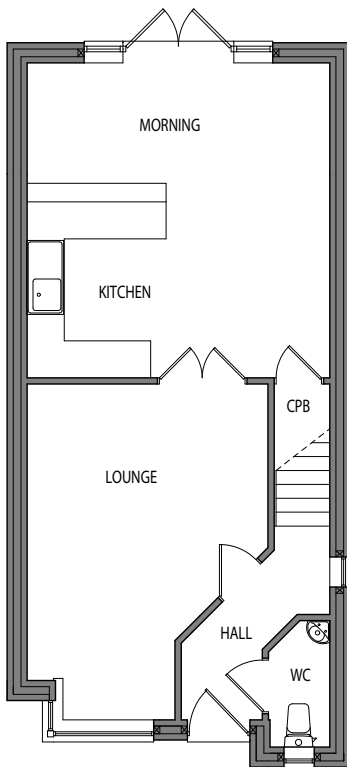


THE STRATFORD



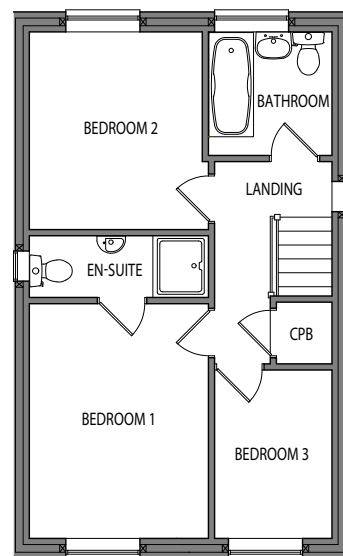
- THREE BEDROOM HOME
- EN-SUITE MASTER BEDROOM
- OPEN PLAN KITCHEN & MORNING ROOM
- FRENCH DOORS TO GARDEN
- GROUND FLOOR WC
- FAMILY BATHROOM

GROUND FLOOR



- LOUNGE**
5.4m into Bay x 3.9m max
17'8" into Bay x 12'9" max
- KITCHEN / MORNING**
5.1m x 4.9m max
16'7" x 15'11"
- WC**
2m x 1m
6'8" x 3'4"

FIRST FLOOR



- BEDROOM 1**
3.8m x 2.9m max
12'5" x 9'5"
- EN-SUITE**
2.9m x 1m
9'5" x 3'3"
- BEDROOM 2**
3.2m x 2.8m max
10'5" x 9'1"
- BEDROOM 3**
2.7m x 1.9m
8'11" x 6'2"
- BATHROOM**
1.9m x 1.9m
6'2" x 6'2"

FIND OUT MORE & BOOK A VIEWING

www.edwardshomes.co.uk