



3 Bedroom Three Bedroom Family Home located in Tiptree.

Find us on..



JOHN ALEXANDER
ESTATE AGENTS

Anchor Road
Tiptree
Essex
CO5 0AP



3



2



1



1,165 sq
ft

FULL DESCRIPTION

OVERVIEW

This 3-bedroom semi-detached house offers a comfortable and stylish living space. The property features a spacious kitchen/diner, perfect for enjoying meals and hosting gatherings. A cosy lounge provides a relaxing retreat, while a convenient cloakroom adds practicality.

Upstairs, three well-proportioned bedrooms offer versatility, and a modern bathroom provides a tranquil space. Outside, a private garden awaits, ideal for outdoor activities. With excellent transport links and nearby amenities, this property is a must-see.

ENTRANCE HALL

Stairs to first floor.

LOUNGE/DINER

24' 9" x 10' 4" (7.54m x 3.15m)

Window to front, radiator, fireplace, French doors to rear.

CLOAKROOM

Low level w.c, wash hand basin, plumbing and space for washing machine.

KITCHEN

21' 6" x 11' 2" (6.55m x 3.4m)

Matching eye and base units, window and door to rear, sink with mixer tap, electric hob with extractor hood, space for dishwasher and fridge freezer, radiator.

BEDROOM FOUR

16' x 7' 3" (4.88m x 2.21m)

Window to front, radiator.

LANDING

Loft access, window to side.

BEDROOM ONE

13' 4" x 9' 9" (4.06m x 2.97m)

Window to rear, radiator, wardrobe to remain.

BEDROOM TWO

11' 3" x 9' 9" (3.43m x 2.97m)

Window to front, radiator.

BEDROOM THREE

8' 8" x 8' 2" (2.64m x 2.49m)

Window to front, radiator.

FAMILY BATHROOM

Fully tiled walls, window to side, storage cupboard, low level w.c, wash hand basin, heated towel rail, bath with shower over.

GARDEN

Shed to remain, mainly laid to lawn with patio area.

Asking Price Of
£375,000



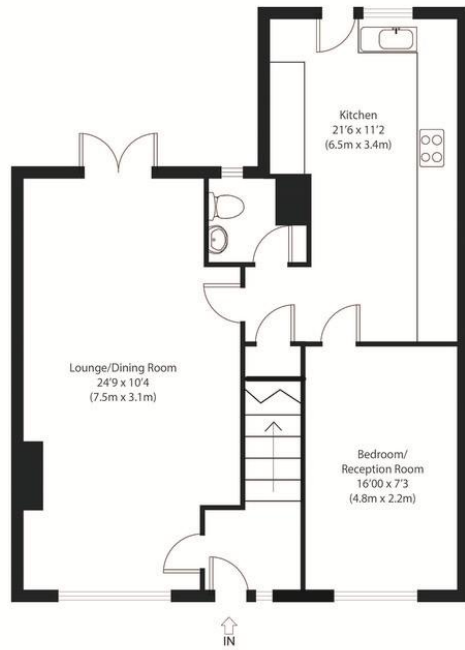




Anchor Road, Tiptree CO5 0AP



FLOORPLAN

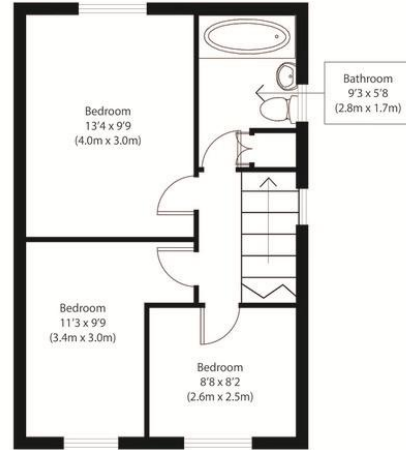


Ground Floor

Approximate Gross Internal Area
1165 sq ft (108 sq m)

Disclaimer: Floorplan measurements are approximate and are for illustrative purposes only. While we do not doubt the floor plan accuracy and completeness, you or your advisors should conduct a careful, independent investigation of the property in respect of monetary valuation. copyright www.eaiphotocad.com

FINE COUNTRY



First Floor

DIRECTIONS

CONTACT
1 Church Road
Tiptree
Colchester
Essex
CO5 0LG

E info@john-alexander.co.uk

T 01621 814334 www.john-alexander.co.uk

Find us on..



JOHN ALEXANDER
ESTATE AGENTS