



Tavistock Road, Roborough, Plymouth, PL6 7AA

£650,000 FREEHOLD

**ATWELL
MARTIN**
ESTATE AGENTS



Tavistock Road

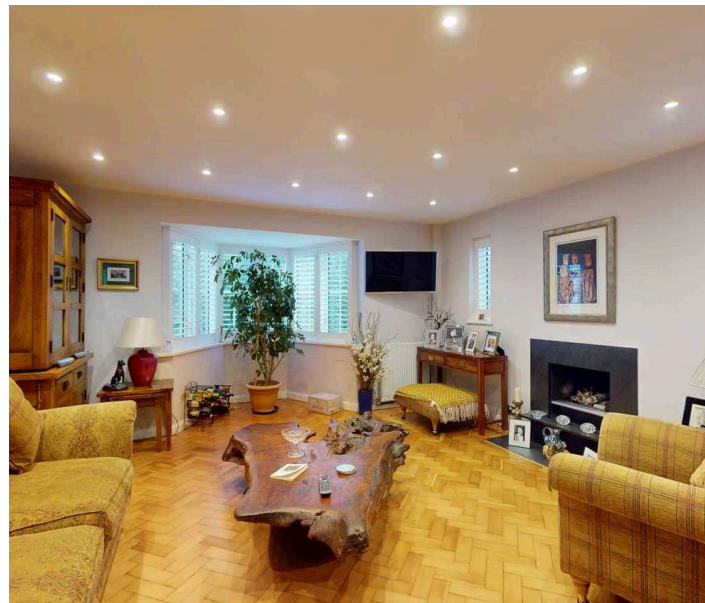
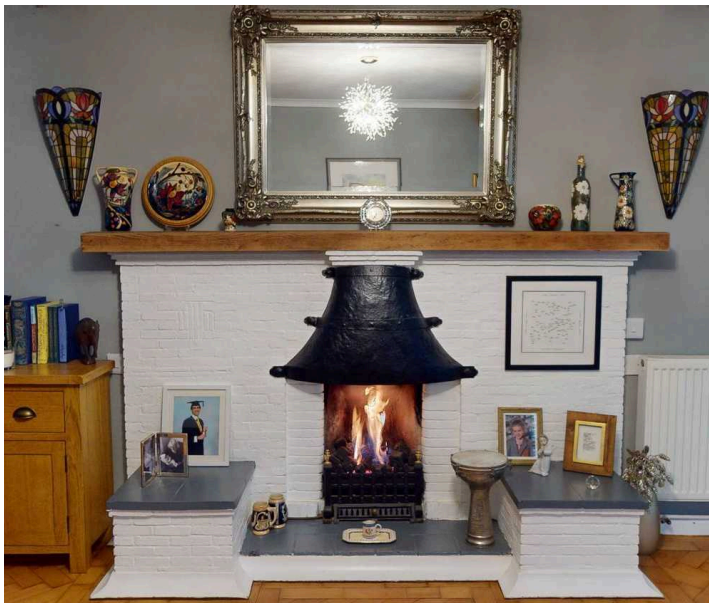
Roborough, Plymouth

Stunning 4-bed family home with spacious driveway and garage, ideal for entertaining or relaxing by the fireplace. Ample bedrooms and outdoor space. Perfect blend of comfort and convenience for modern family living. Contact us for a viewing!

Council Tax band: E

Tenure: Freehold

- Four Bedroom Detached Family Home
- Driveway for Four Cars
- Single Detached Garage
- Generous Kitchen Diner
- Cosy Lounge with Open Fireplace
- Large Front and Rear Level Gardens
- Located Close to Good schools and Amenities
- Family Bathroom & En-suite



Tavistock Road

Roborough, Plymouth

Step into this stunning four-bedroom detached family home that exudes elegance and charm. With a spacious driveway for up to four cars and a single detached garage, parking will never be an issue for you and your family.

As you enter, you are greeted by a generous kitchen diner, perfect for hosting family gatherings and entertaining friends. The cosy lounge beckons you to unwind by the open fireplace on chilly evenings, creating a warm and inviting atmosphere throughout.

The bedrooms provide ample space for relaxation and privacy, with a family bathroom and en-suite ensuring convenience for the whole family. Located close to good schools and amenities, this home offers the perfect blend of comfort and convenience for modern family living.

The large front and rear level gardens provide plenty of outdoor space for children to play or for you to unleash your gardening skills and create your oasis of tranquillity.

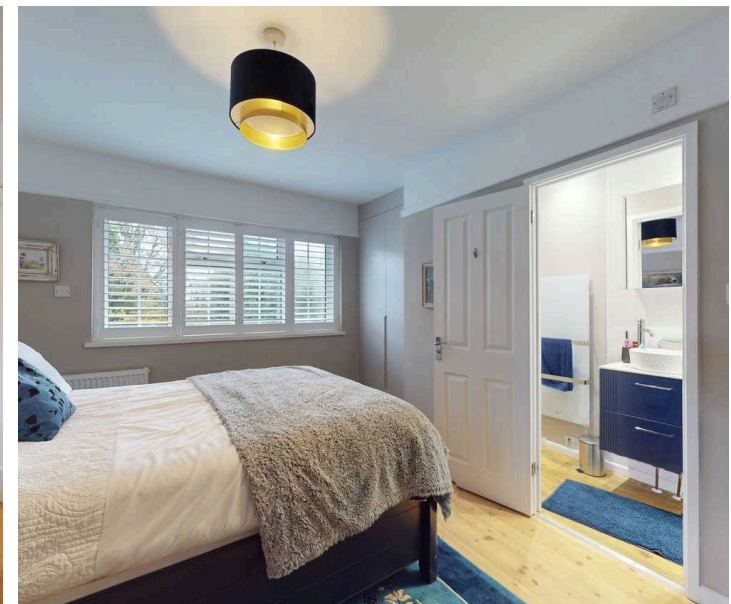
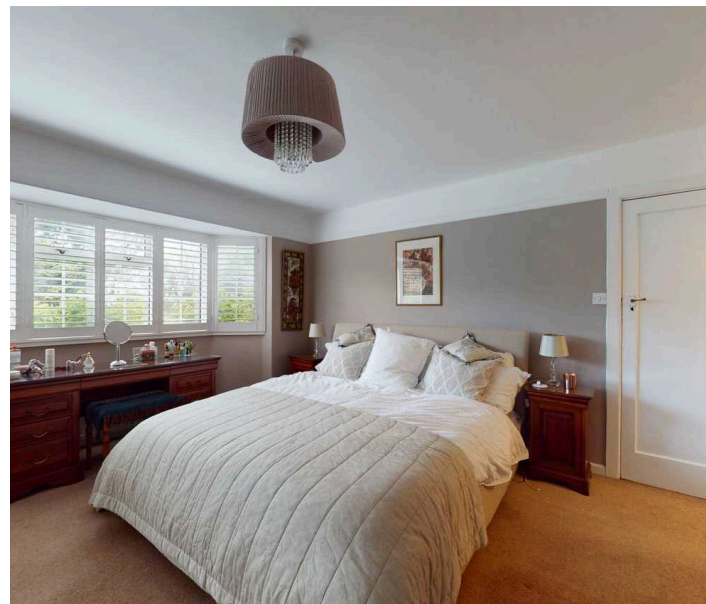
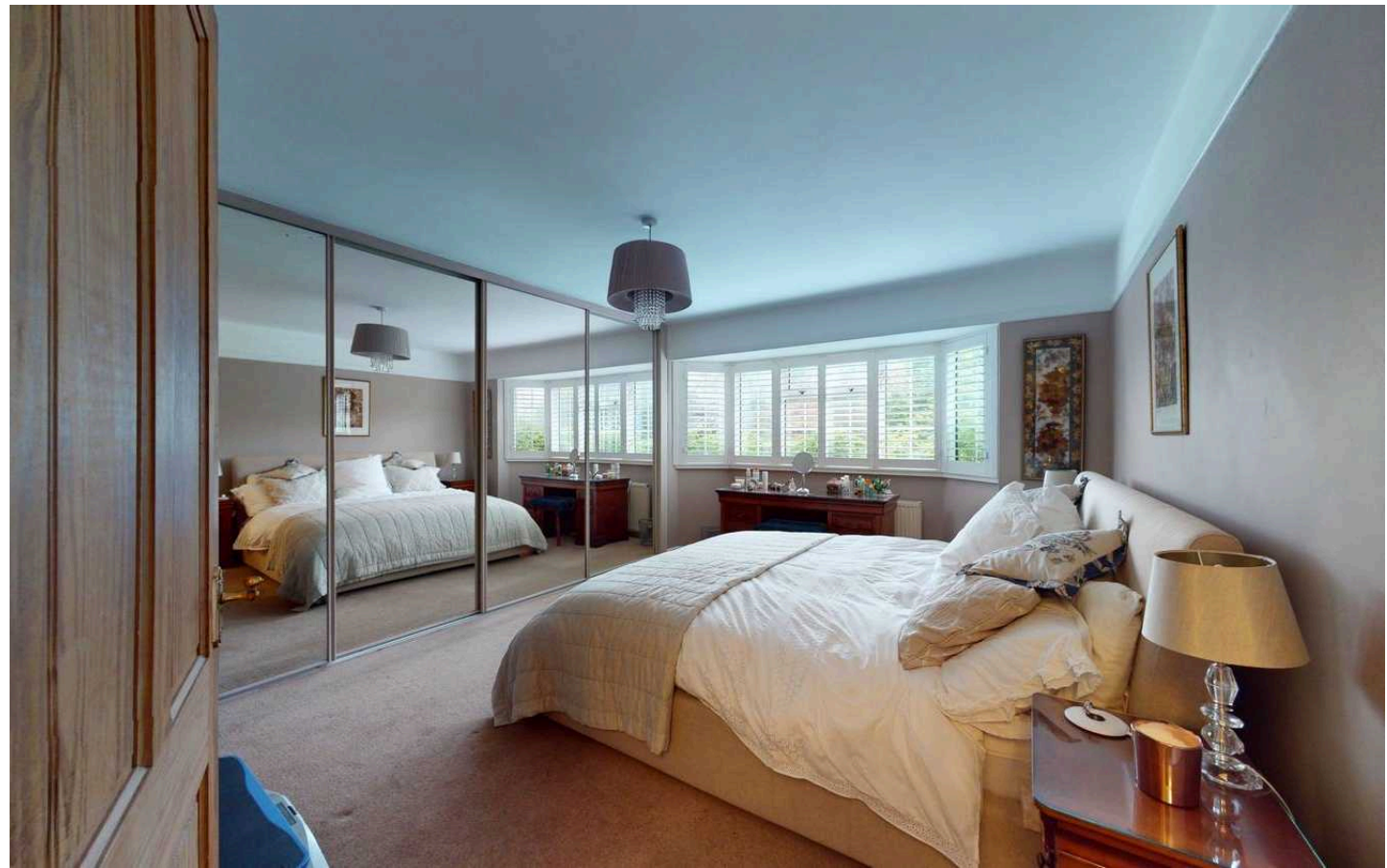


Tavistock Road

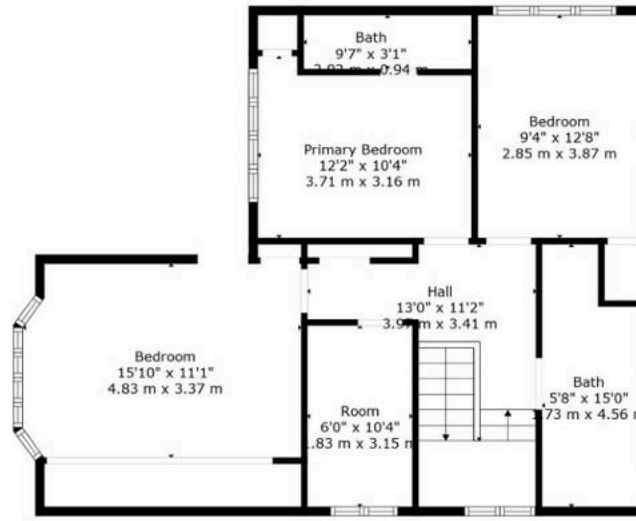
Roborough, Plymouth

Designed for those who appreciate quality and style, this property boasts a layout that seamlessly combines functionality and sophistication. Whether you're looking to curl up with a good book in the lounge or prepare a delicious meal in the well-appointed kitchen diner, this home offers the space and flexibility you need to make it your own.

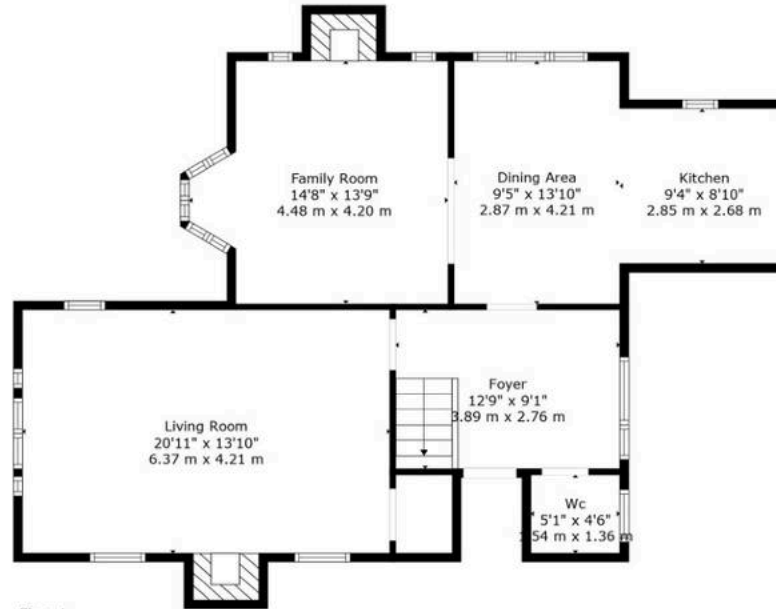
Contact us today to arrange a viewing and discover the endless possibilities that await you in this exceptional property.







Floor 2



Floor 1



TOTAL: 1646 sq. ft, 153 m2
 FLOOR 1: 856 sq. ft, 80 m2, FLOOR 2: 790 sq. ft, 73 m2
 EXCLUDED AREAS: FIREPLACE: 26 sq. ft, 2 m2

Floor Plan Created By Cubicasa App. Measurements Deemed Highly Reliable But Not Guaranteed.





Atwell Martin

Atwell Martin, 65 Southside Street - PL1 2LA

01752 202121

plymouthsales@atwell-martin.co.uk

plymouth.atwellmartin.co.uk/

Atwell Martin Plymouth endeavour to ensure the accuracy of property details produced and displayed. Please note that we have not tested any apparatus, equipment, fixtures, fittings or services and so cannot verify that they are connected, in working order or fit for purpose. It is imperative that the buyer of any property makes such checks, prior to purchase so as to satisfy themselves of the properties suitability for their purchase. .

