



Plot Adjacent To The Meadows, Askews Lane

Guide Price £275,000

Yaxley



Plot Adjacent To The Meadows, Askews Lane

Yaxley

Sitting on the southern edge of the village of Yaxley, an exciting opportunity to acquire a freehold plot with full planning permission for the development of a detached, three-bedroom, single storey family home.

Council Tax band: TBD

Tenure: Freehold

- Full Planning in Place for Contemporary, 3 Bed Bungalow
- 3 Reception Rooms, 3 Bedroom Suites, Double Garage
- Plot Approx. 0.49 Acre
- Situated on the Edges of Yaxley, Surrounded by Countryside
- Huntingdonshire District Council Ref: #22/01422/FUL









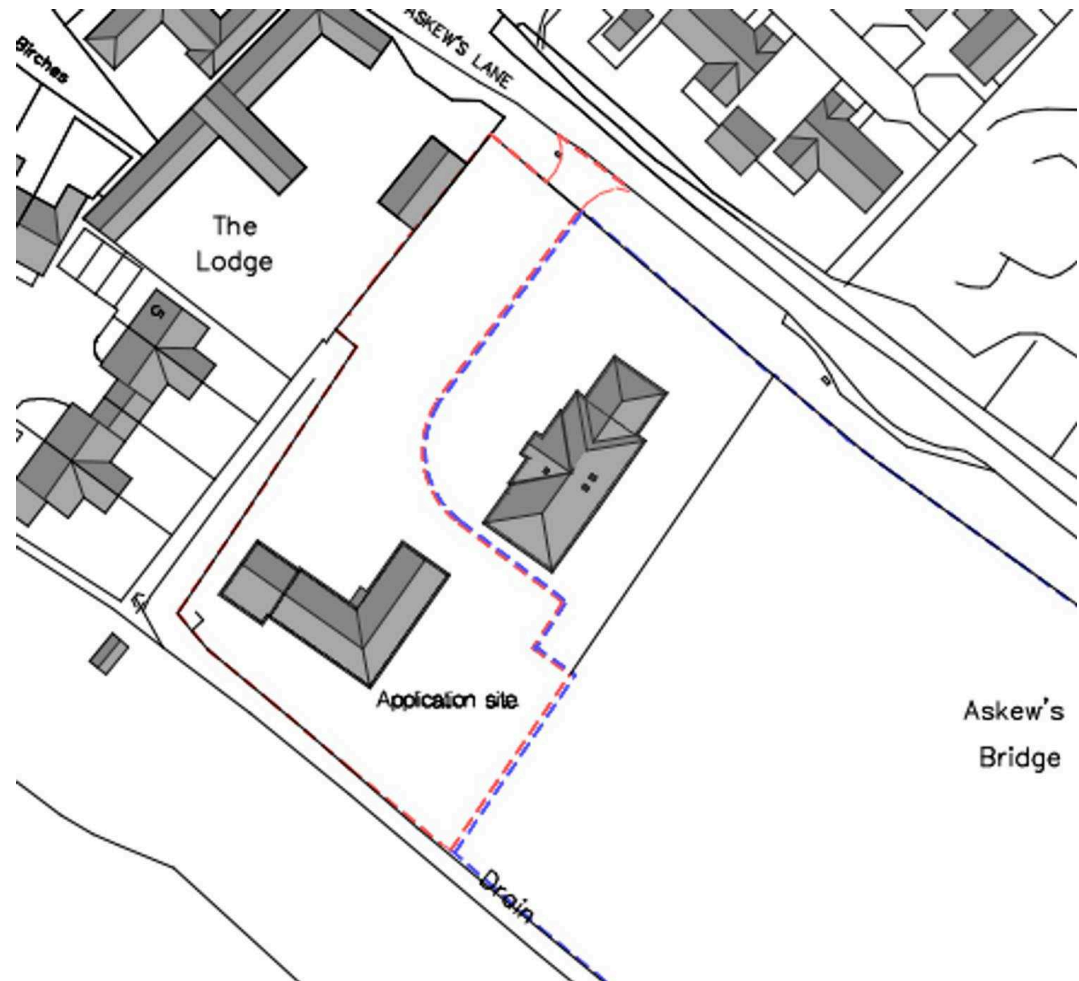
Ground Floor

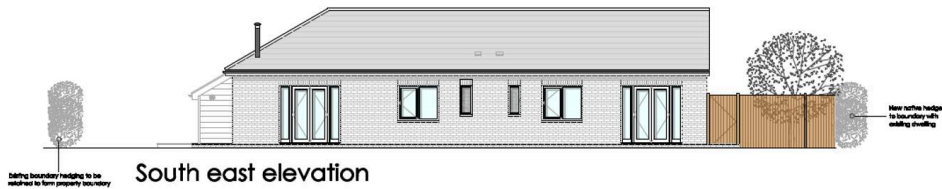
Approx. 213.2 sq metres (2295.0 sq feet)



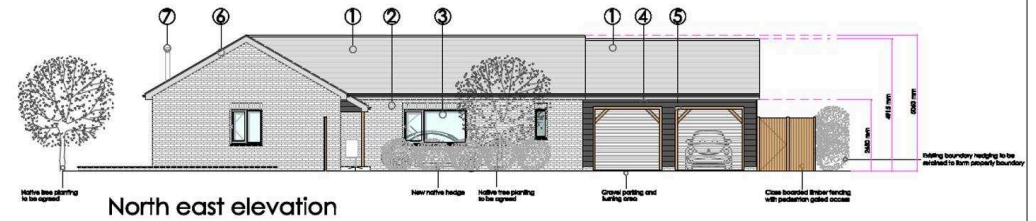
Total area: approx. 213.2 sq. metres (2295.0 sq. feet)

This Floor Plan and the Measurements are a guide Only.
Plan produced using PlanUp.





South east elevation



North east elevation



South west elevation



North west elevation



Pelham James Unique Homes

Unit 3, Saddlers Court, Barleythorpe, Rutland, LE15 7GH

01832 770 969 | team@pelhamjames.co.uk | www.pelhamjames.co.uk

Please note, we have used rendered / virtual staging for some of the images for illustrative representation purposes only.

