



SAB

Paddock Close, Northolt

£230,000

**SAB**  
ESTATES





## Paddock Close

Northolt

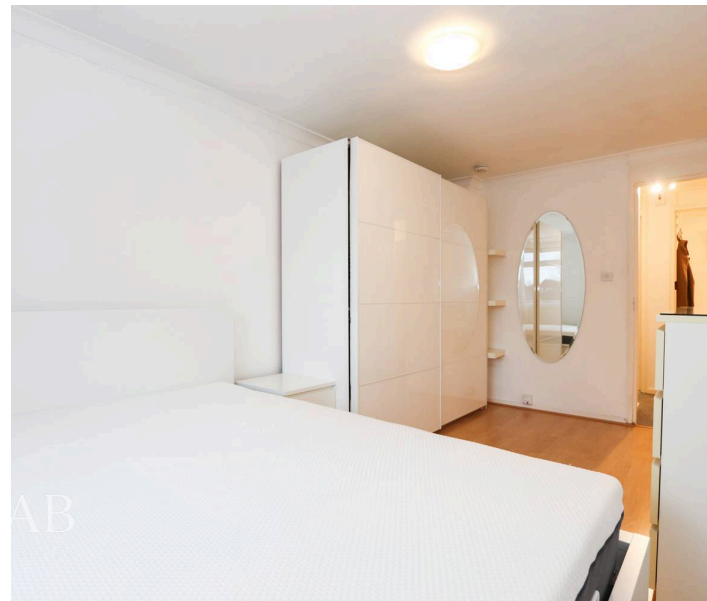
- Excellent Condition Throughout
- Leasehold: 86 Years Remaining
- Ground Rent: £10pa / Service Charge: £279pcm
- Heating & Hot Water Included in Service Charge
- Free Residents Parking
- New Megaflo Hot Water Tank
- Perfect for First Time Buyers
- 50 m<sup>2</sup> / 538 ft<sup>2</sup>
- Second Floor Flat (No Lift)

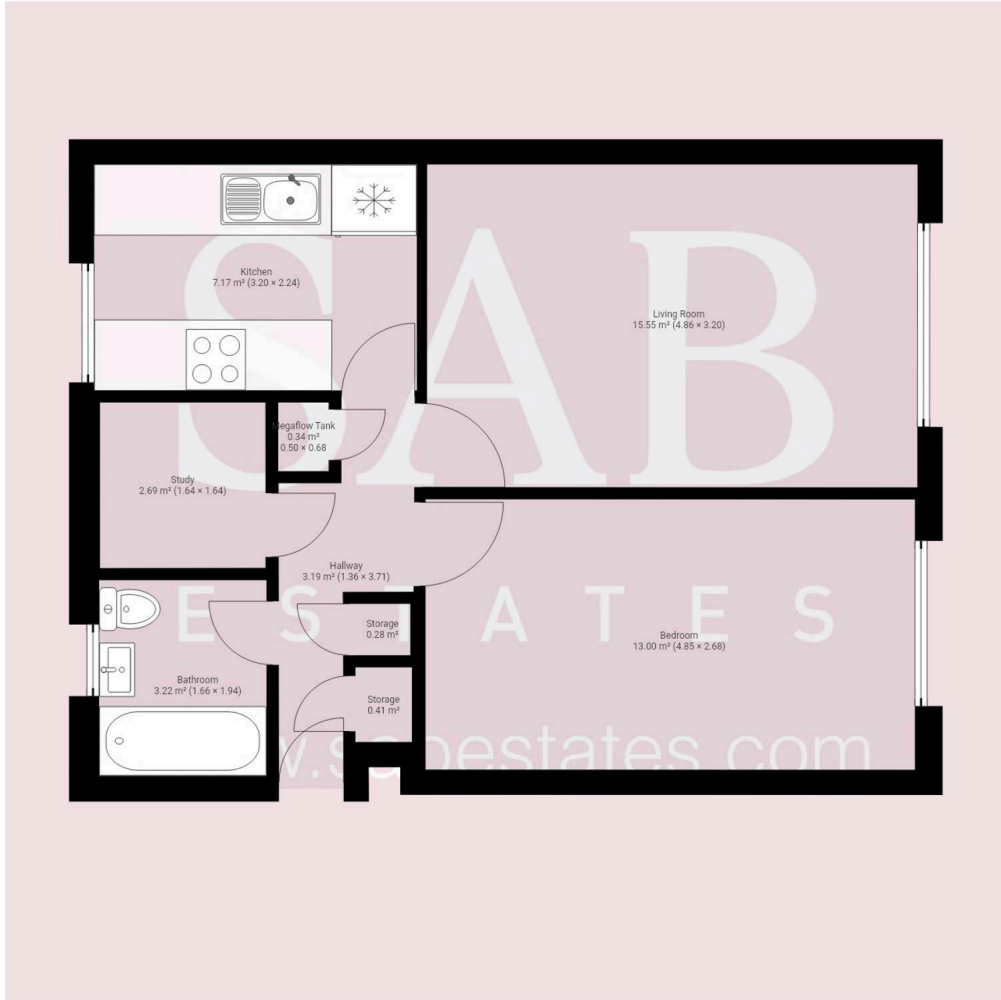
Council Tax band: B

Tenure: Leasehold

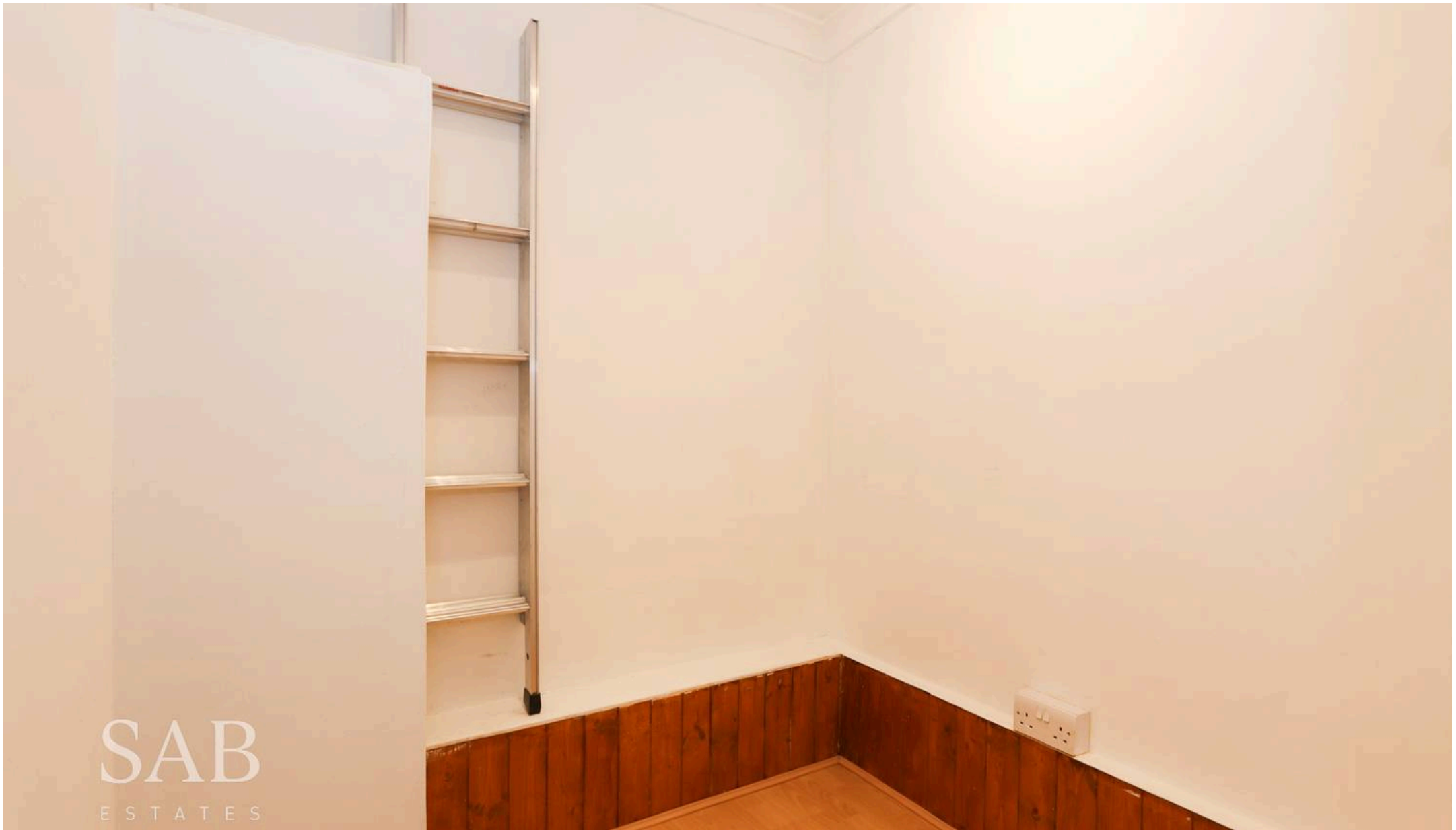
EPC Energy Efficiency Rating: D

EPC Environmental Impact Rating: D





THIS FLOORPLAN IS PROVIDED WITHOUT WARRANTY OF ANY KIND. SENSOPIA DISCLAIMS ANY WARRANTY INCLUDING, WITHOUT LIMITATION, SATISFACTORY QUALITY OR ACCURACY OF DIMENSIONS.



**SAB**  
ESTATES

## **SAB Estates**

236-238 Ruislip Road, Greenford - UB6 9RS

020 8575 2929 • [info@sabestates.com](mailto:info@sabestates.com) • [www.sabestates.com/](http://www.sabestates.com/)