



Sunningdale Drive

Salford



£325,000

Sunningdale Drive

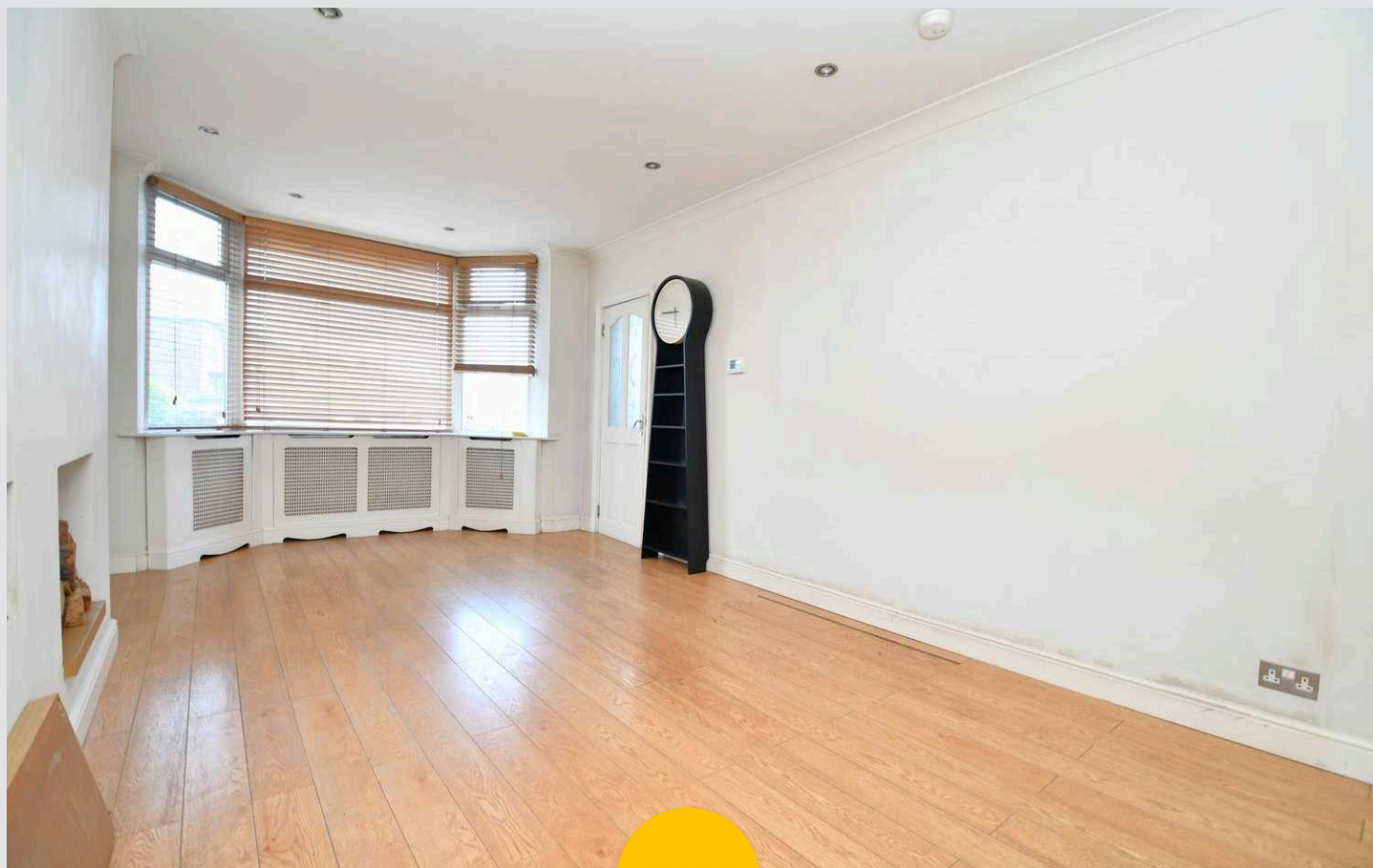
Salford

DOUBLE STOREY EXTENDED This large, three bedroom semi-detached property offers an abundance of space! Featuring a dressing room and an ensuite to the main bedroom!

Council Tax band: C

Tenure: Freehold

- Double Storey Extended, Three Bedroom Semi-Detached Family Home
- Backing onto Duncan Matheson Playing Fields
- Large, Bay-Fronted Lounge and a Separate Dining Room
- Modern Fitted Kitchen and a Separate Utility Room
- Added Bonus of a Conservatory, Letting Plenty of Natural Light In
- Three Double Bedrooms
- Main Bedroom Benefitting from Access to a Spacious Dressing Room/Office, Along with an Ensuite Shower Room
- Driveway to the Front for Off-Road Parking
- Generously-Sized Garden to the Rear
- Close to Excellent Transport Links into Salford Quays, Media City and Manchester City Centre



HILLS



Entrance Hallway

Complete with a ceiling light point, double glazed window and wall mounted radiator. Fitted with tiled flooring.

W.C.

Featuring a two piece suite including W.C. and hand wash basin. Complete with a wall light point, part tiled walls and tiled flooring.

Lounge

17' 4" x 10' 7" (5.29m x 3.22m)

Complete with ceiling spotlights, double glazed bay window and wall mounted radiator. Fitted with laminate flooring.

Dining Room

10' 1" x 8' 6" (3.08m x 2.60m)

Complete with a ceiling light point, wall mounted radiator and tiled flooring.

Kitchen

13' 3" x 7' 7" (4.03m x 2.30m)

Featuring complementary fitted units with space for a freestanding oven and fridge freezer. Complete with ceiling spotlights, double glazed window and tiled flooring.

Conservatory

17' 7" x 7' 7" (5.35m x 2.32m)

Complete with a wall mounted radiator and tiled flooring.

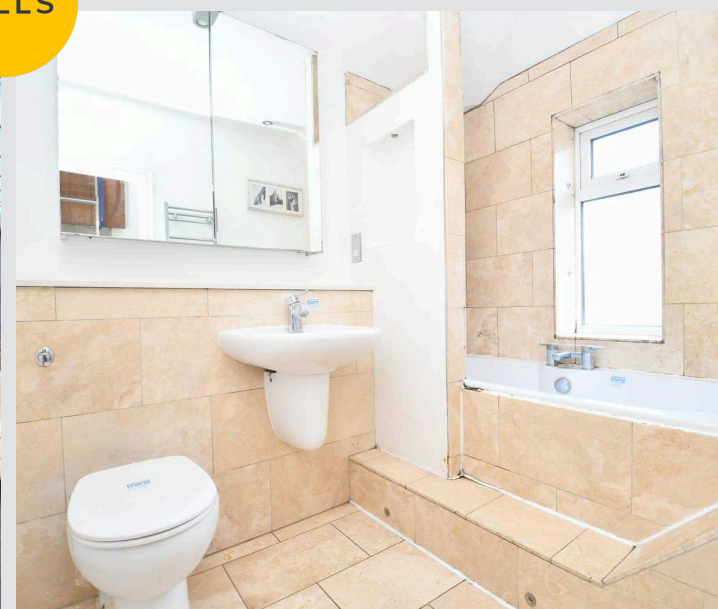
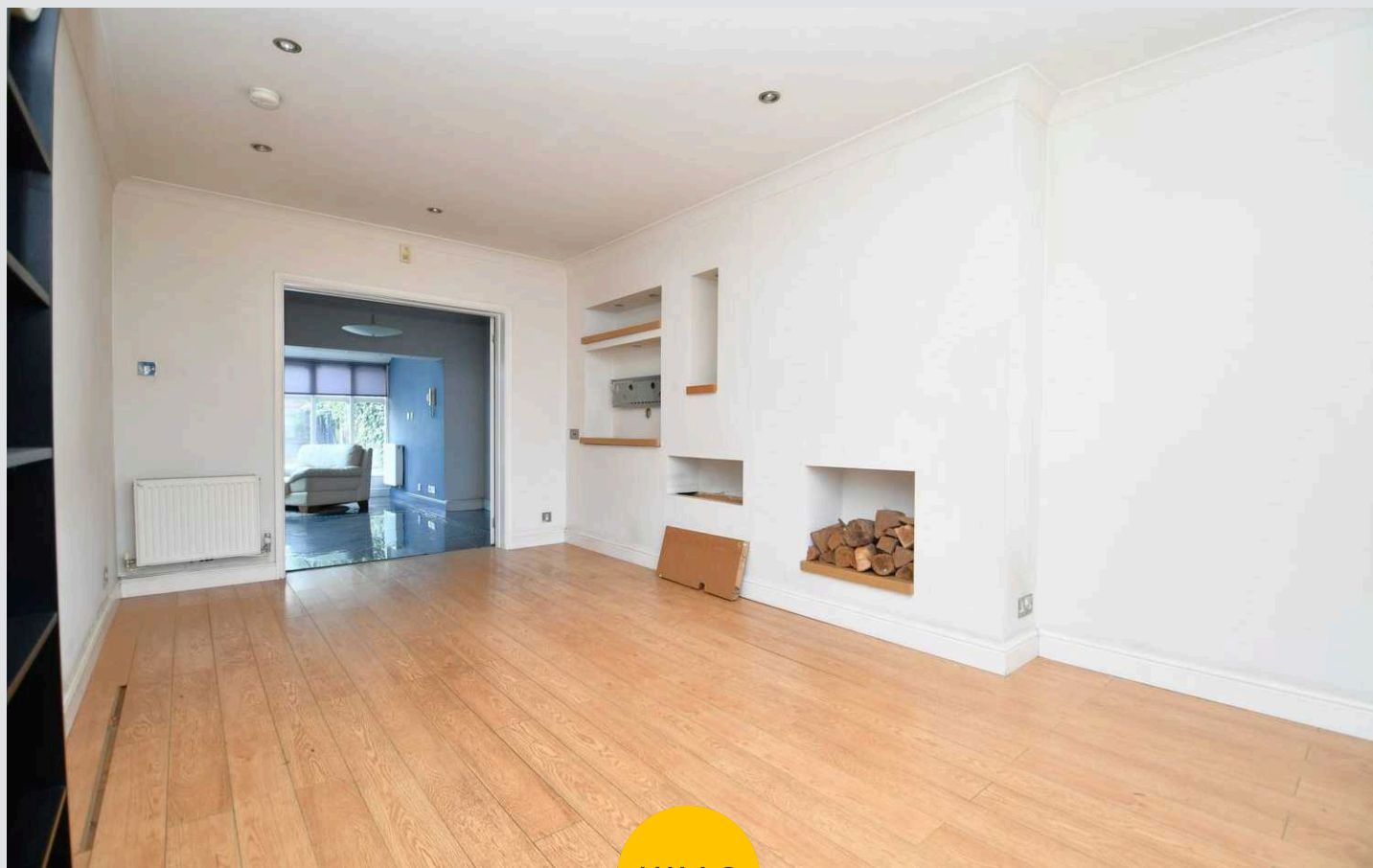
Utility Room

7' 7" x 3' 6" (2.31m x 1.06m)

Space for a washing machine and dryer. Complete with a ceiling light point, hand wash basin and wall mounted radiator. Fitted with tiled flooring.

Landing

Complete with a ceiling light point, double glazed window and carpet flooring.



Bedroom One

14' 0" x 10' 2" (4.26m x 3.09m)

Featuring fitted furniture. Complete with two ceiling light points, ceiling spotlights, double glazed window and wall mounted radiator. Fitted with carpet flooring.

En suite

6' 4" x 2' 9" (1.93m x 0.84m)

Featuring a three piece suite including shower, hand wash basin and W.C. Complete with a ceiling light point, part tiled walls and tiled flooring.

Dressing Room

8' 10" x 7' 10" (2.69m x 2.39m)

Complete with a ceiling light point, double glazed window and wall mounted radiator. Fitted with laminate flooring.

Bedroom Two

11' 0" x 9' 4" (3.36m x 2.85m)

Complete with a ceiling light point, double glazed bay window and wall mounted radiator. Fitted with carpet flooring.

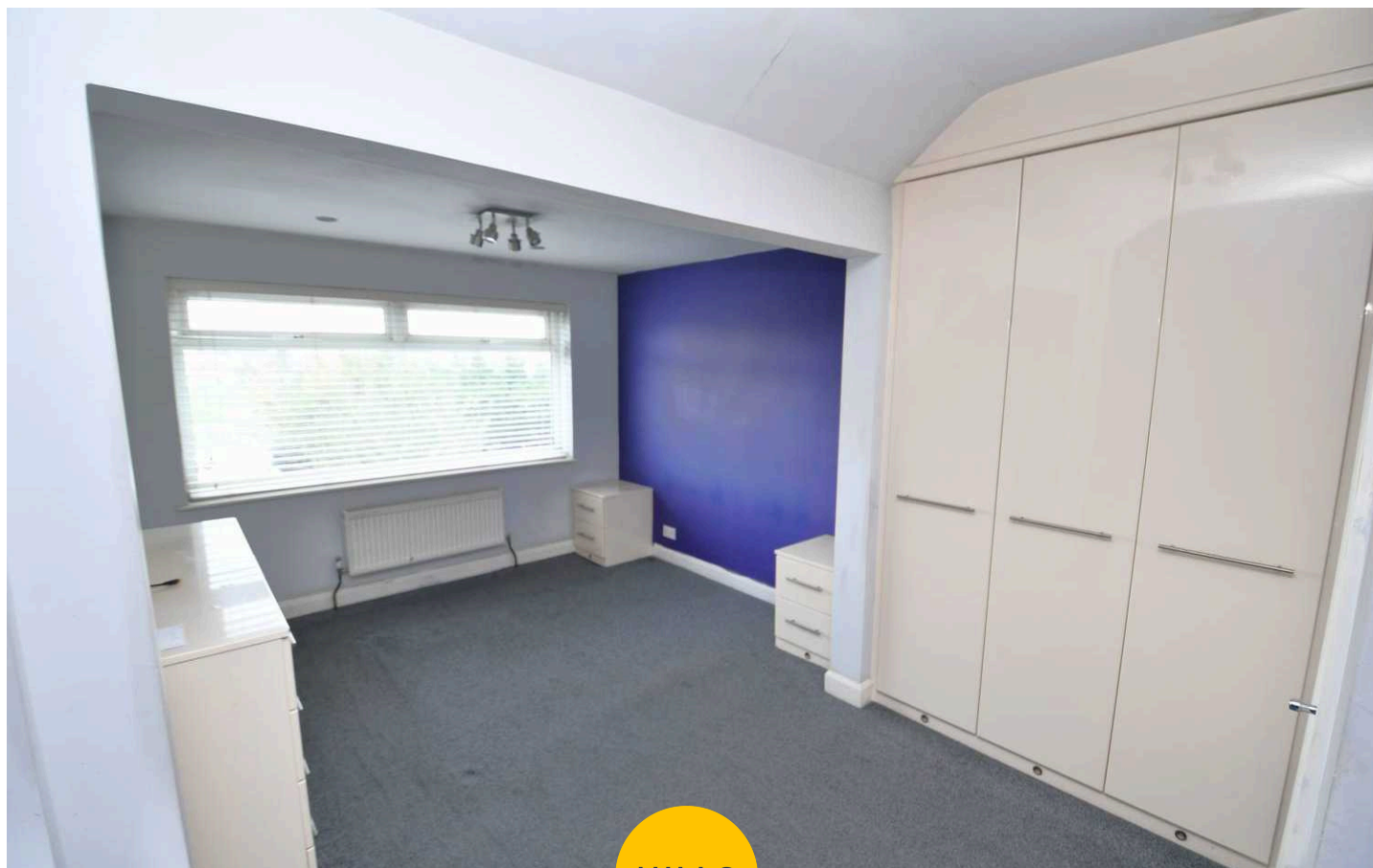
Bedroom Three

7' 10" x 7' 8" (2.39m x 2.34m)

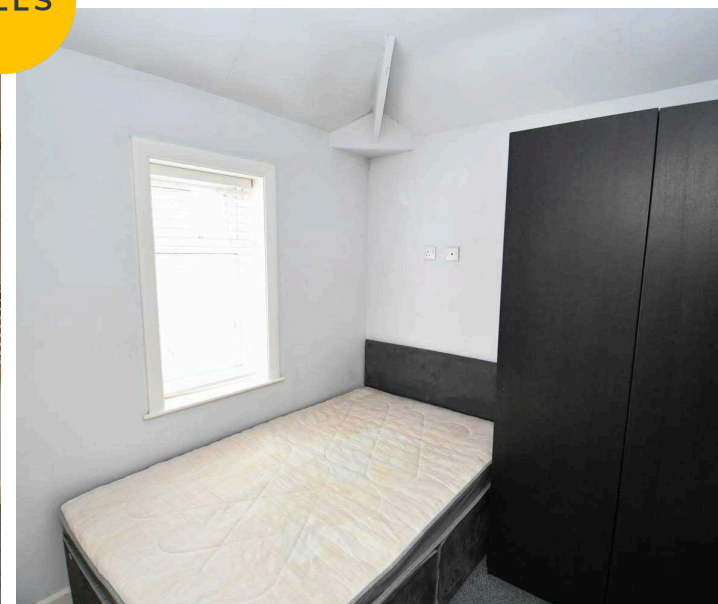
Complete with a ceiling light point, double glazed window and wall mounted radiator. Fitted with carpet flooring.

External

To the front of the property is a driveway. To the rear of the property is a garden with mature plants, grass and decking. Backing onto Duncan Matheson Playing Fields.

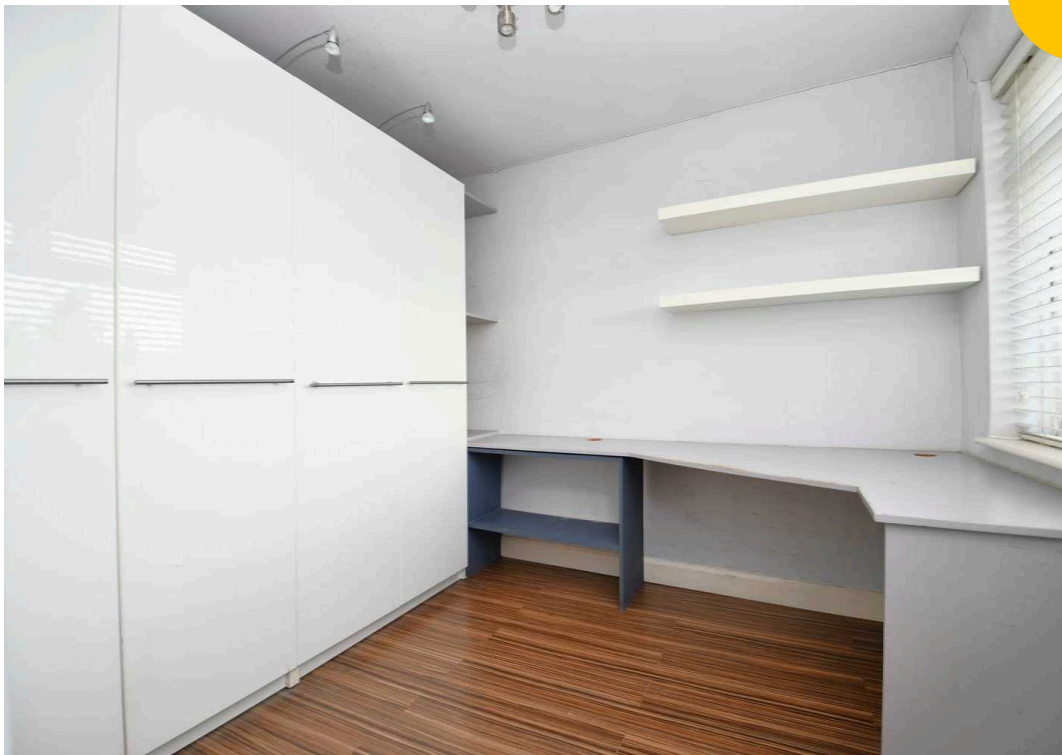


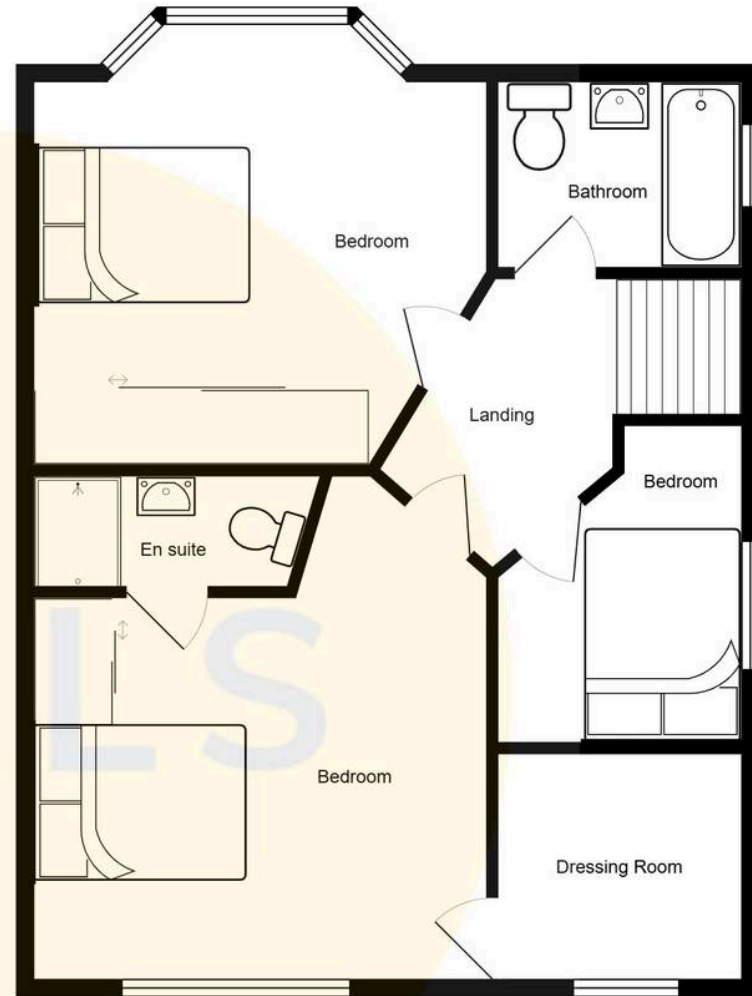
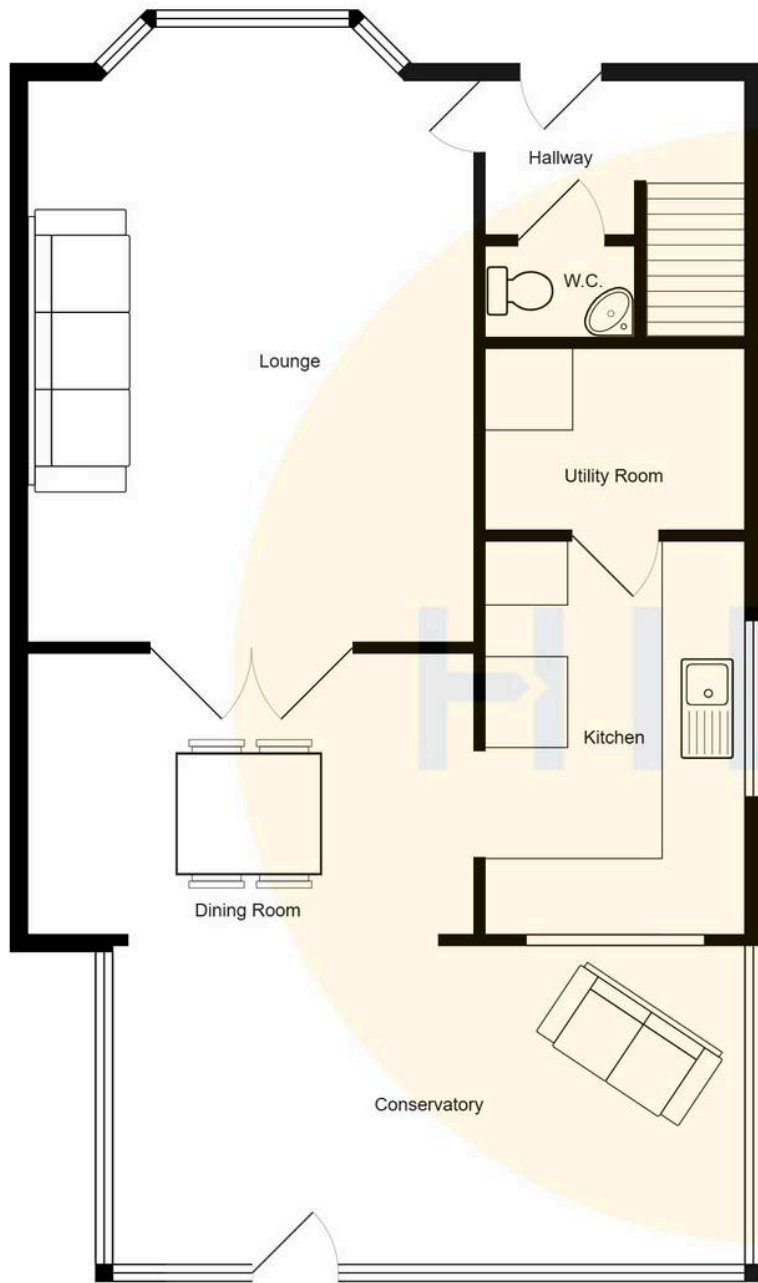
HILLS





HILLS







Hills | Salfords Estate Agent

Hills Residential, Sentinel House Albert Street – M30 0SS

0161 707 4900

sales@hills.agency

www.hills.agency/



THE PROPERTY MISDESCRIPTIONS ACT 1991 The Agent has not tested any apparatus, equipment, fixtures and fittings or services and so cannot verify that they are in working order or fit for the purpose. A Buyer is advised to obtain verification from their Solicitor or Surveyor. References to the Tenure of a Property are based on information supplied by the Seller. The Agent has not had sight of the title documents. A Buyer is advised to obtain verification from their Solicitor. You are advised to check the availability of this property before travelling any distance to view. Every effort and precaution has been made to ensure these particulars are correct and not misleading but their accuracy is not guaranteed nor do they form part of any contract. If there is any point which is of particular importance to you, please contact us and we will provide any information you require. This is advisable, particularly if you intend to travel some distance to view the property. The mention of any appliances and services within these details does not imply that they are in full and efficient working order. These particulars are in draft form awaiting Vendors confirmation of their accuracy. These details must therefore be taken as a guide only.