



11 Mayfield Court, Armadale

Armadale

Offers Over **£130,000**



11 Mayfield Court

Armadale, Armadale

Welcome to Mayfield Court , nestled in the heart of Armadale, this spacious three-bedroom mid-terrace property offers an excellent opportunity for first-time buyers to create their dream home.

As you step inside, the welcoming hallway flows effortlessly to the back of the property and greets you with a large spacious kitchen which boasts ample storage and plenty of room for a dining table, the kitchen also grants access to the rear garden via the back door, providing a private outdoor space complete with a large garden shed.

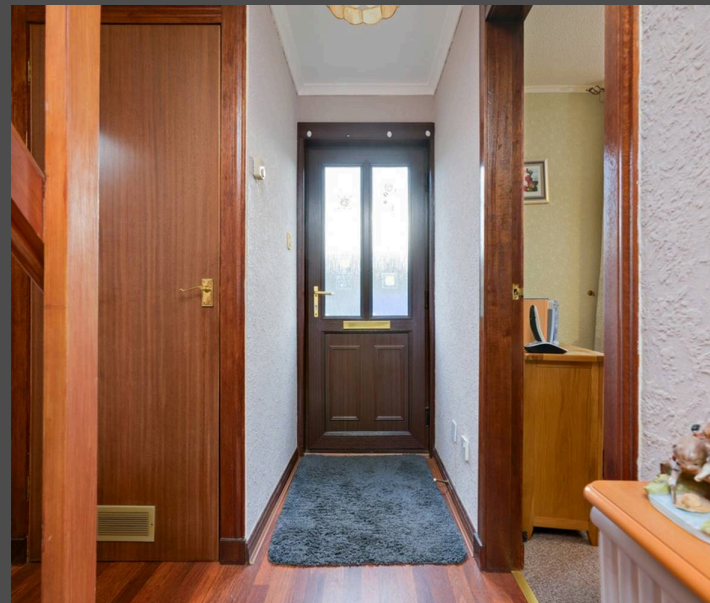
This home also boasts a downstairs WC , adding to the convenience of the home as well as the three generously sized storage cupboards on the lower level.

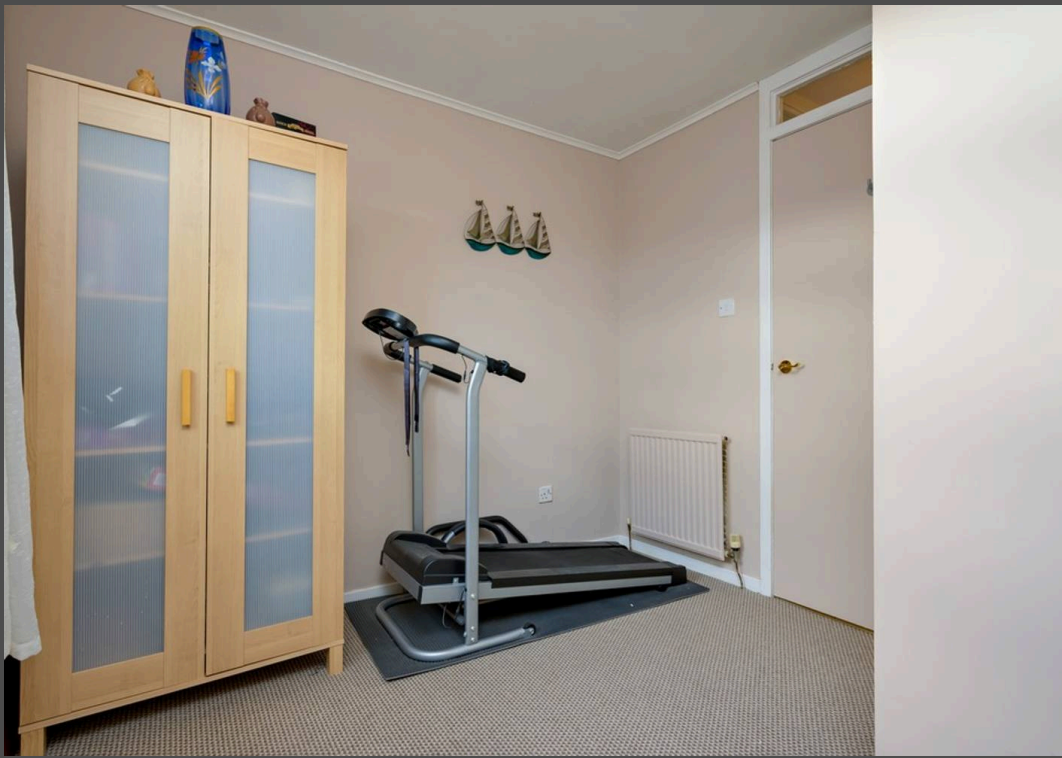


Completing the ground floor is the spacious lounge which is situated to the front of the property, perfect for relaxing in after a long day.

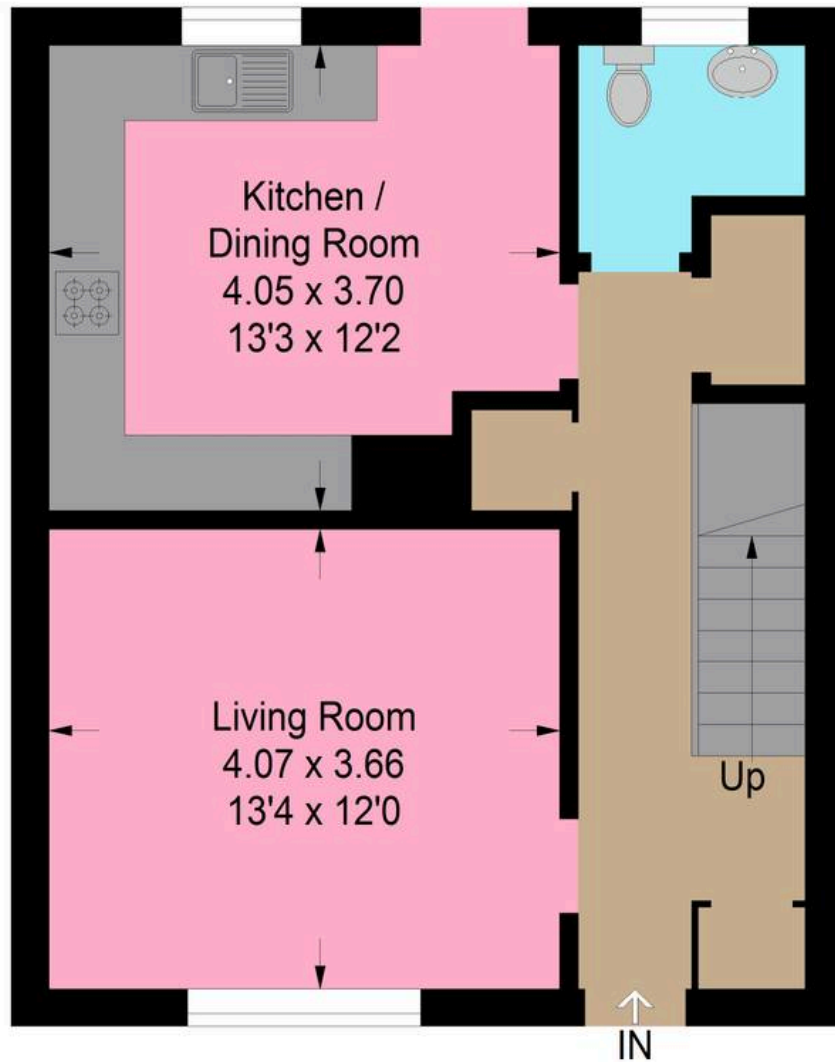
Upstairs, you'll find three well proportioned bedrooms, each full of potential to become comfortable and stylish sanctuaries. Two of the three rooms can easily accommodate a double bed. The upper floor is completed by a family bathroom, offering great space and functionality.

Conveniently located, this home is just a short drive from Armadale train station, with schools, shops, and other local amenities within easy reach.

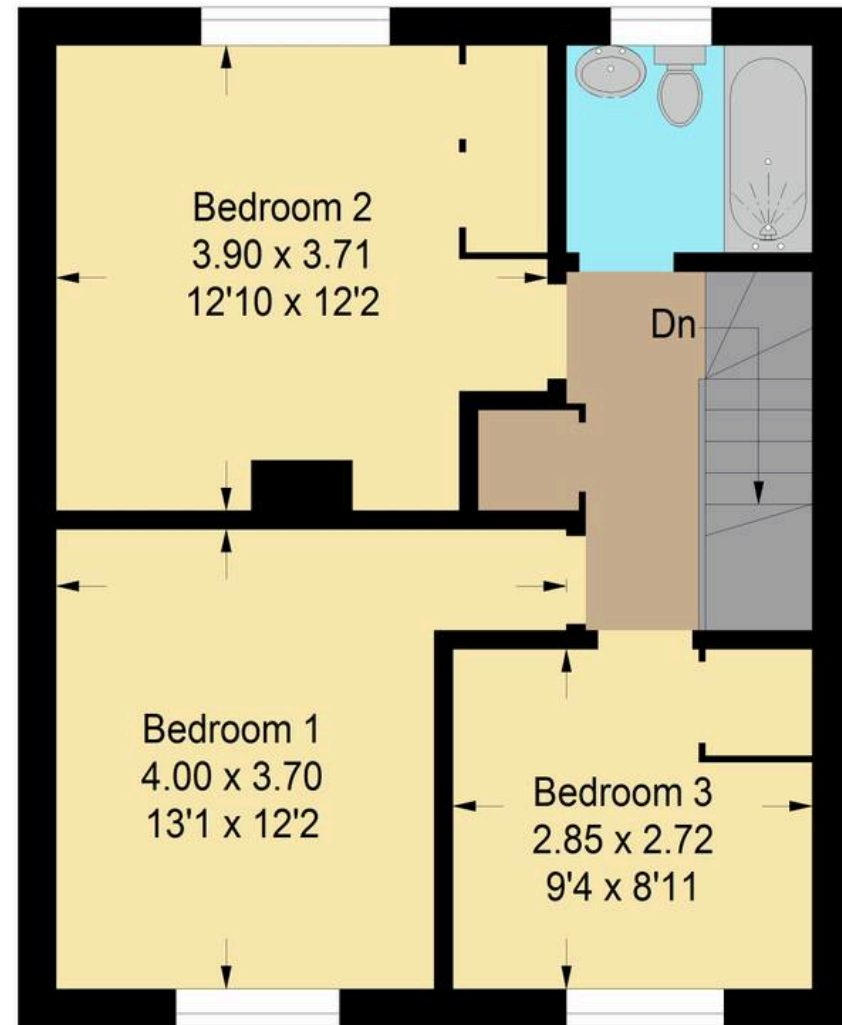




Approximate Gross Internal Area = 90.0 sq m / 969 sq ft



Ground Floor



First Floor

Illustration For Identification Purposes Only. Not To Scale (ID1149348 / Ref:89653)



Bridges Properties

94 West Main Street, Whitburn - EH47 0QU

01501519435

info@bridges-properties.co.uk

www.bridges-properties.co.uk/

