



Brancaster Close

Amington Fields, Tamworth, , B77 3QD

Offers Over £395,000

Property Features

- Stunning Detached Family Home
- Impressive Front Aspect
- Superb Family Lounge & Dining Room
- Well-Appointed Breakfast Kitchen
- Main Bedroom & En Suite
- Three Further Bedrooms
- Low Maintenance Rear Garden
- Ample Off Road Parking

Full Description

Taylor Cole Estate Agents are proud to present this stunning detached family residence, located in one of Tamworth's most prestigious neighbourhoods. Surrounded by a collection of refined properties and set behind a striking exterior, this impressive home has been thoughtfully reimaged by its current owners. With exquisite interior design, outstanding local schools, excellent transport connections, and a host of nearby amenities, this property is the epitome of modern family living.

GROUND FLOOR

As you step inside, you're greeted by an abundance of natural light, creating a warm and uplifting atmosphere throughout. The reception hall, featuring elegant herringbone flooring and a staircase leading to the first-floor landing, sets the tone with its stylish and inviting aesthetic.

The lounge is a remarkable living space, offering ample room for comfortable furnishings and enhanced by a bespoke media wall complete with a glass-fronted "living flame" fireplace – a perfect centrepiece for cosy evenings. Internal French doors lead to an elegant dining room at the rear, ideal for both intimate meals and formal gatherings. These interconnected spaces offer the flexibility to create a large, open-plan entertaining area when desired.

Adjacent to the dining room, the breakfast kitchen is a beautifully designed hub, showcasing a sophisticated selection of contemporary units and worktops. Modern appliances are seamlessly integrated, ensuring both style and functionality. A dedicated utility room complements this space, providing additional storage and housing for appliances, with direct access to a guest cloakroom and the rear garden.



RECEPTION HALL

15' 5" x 5' 11" (4.70m x 1.82m)

FAMILY LOUNGE

16' 4" x 11' 0" (4.99m x 3.37m)

DINING ROOM

10' 0" x 9' 11" (3.05m x 3.03m)

BREAKFAST KITCHEN

10' 5" x 9' 11" (3.18m x 3.03m)

UTILITY ROOM

7' 1" x 4' 10" (2.16m x 1.48m)

GUEST CLOAKROOM

4' 10" x 3' 3" (1.48m x 1.00m)

FIRST FLOOR

Upstairs, four generously sized bedrooms await, each thoughtfully designed with built-in storage to maximise space and convenience. The master bedroom exudes luxury, featuring an attractive en suite bathroom with a recessed shower enclosure.

The remaining bedrooms are versatile and well-proportioned, offering options for guest accommodation, a home office, or a dressing room. A tastefully designed family bathroom, complete with a high-quality three-piece suite and stylish tiled surrounds, serves the additional bedrooms.

BEDROOM ONE

14' 4" x 11' 0" (4.37m x 3.37m)

EN SUITE

6' 5" x 6' 3" (1.98m x 1.91m)

BEDROOM TWO

10' 0" x 9' 2" (3.05m x 2.81m)

BEDROOM THREE

11' 2" x 8' 2" (3.41m x 2.49m)

BEDROOM FOUR

8' 2" x 7' 8" (2.49m x 2.36m)

BATHROOM

6' 10" x 6' 2" (2.09m x 1.89m)



OUTSIDE

REAR GARDEN

The outdoor space is designed for ease and enjoyment, featuring a low-maintenance garden with premium tiled paving – a versatile blank canvas for creating your ideal outdoor retreat. Enclosed by sturdy timber fencing and brick-built boundaries, the garden provides privacy and security, making it a tranquil haven for relaxation.

An integral garage adds further appeal, offering excellent storage options and the potential for conversion into an additional living area, should you desire.

ANTI MONEY LAUNDERING

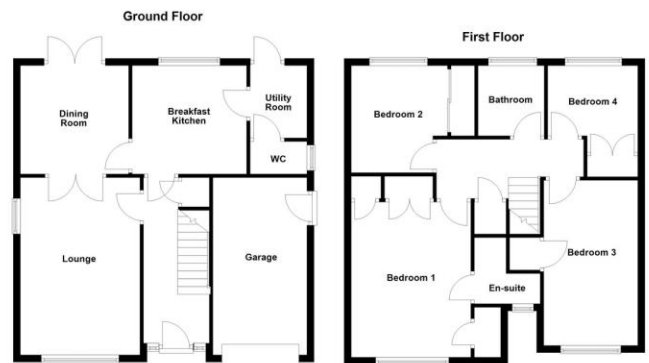
In accordance with the most recent Anti Money Laundering Legislation, buyers will be required to provide proof of identity and address to the Taylor Cole Estate Agents once an offer has been submitted and accepted (subject to contract) prior to Solicitors being instructed.

TENURE

We have been advised that this property is freehold, however, prospective buyers are advised to verify the position with their solicitor / legal representative.

VIEWING

By prior appointment with Taylor Cole Estate Agents on the contact number provided.



%epcGraph_c_1_339%

8 Victoria Road
Tamworth
Staffordshire
B79 7HL

www.taylorcole.co.uk
sales@taylorcole.co.uk
01827 311412

Agents Note: Whilst every care has been taken to prepare these sales particulars, they are for guidance purposes only. All measurements are approximate are for general guidance purposes only and whilst every care has been taken to ensure their accuracy, they should not be relied upon and potential buyers are advised to recheck the measurements