



Dyke End Cottage Madeira Road, Littlestone

New Romney

£895,000



## Dyke End Cottage Madeira Road

Littlestone, New Romney

Stunning 4-bed family home in Littlestone with golf course views. 3 reception rooms, conservatory, master ensuite & dressing room, 3 bathrooms. Landscaped garden, detached double garage, close to seafront, shops, and schools. 2395 sqft of living space. Contact us for a viewing!

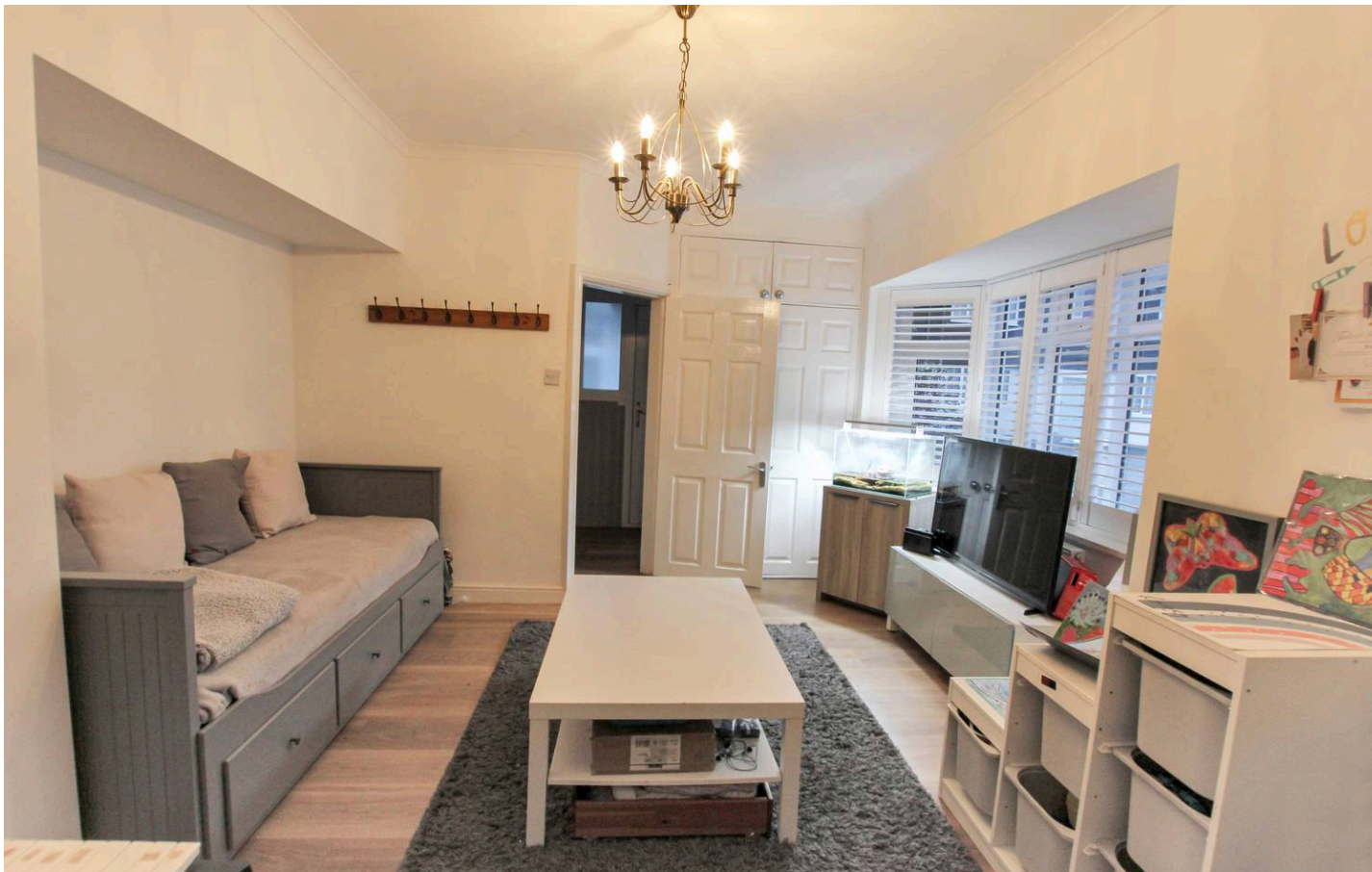
Council Tax band: F

Tenure: Freehold

EPC Energy Efficiency Rating: E

EPC Environmental Impact Rating: E

- Four Bedroom
- Detached House
- Golf Course Views
- Three Reception Rooms
- Large Conservatory
- Kitchen/Breakfast Room
- Master Bedroom Suite
- Popular Location
- Sea Views



**Entrance Hall**

**Living Room**

15' 8" x 16' 10" (4.77m x 5.12m)

**Dining Room**

18' 6" x 9' 3" (5.65m x 2.81m)

**Snug**

13' 8" x 11' 5" (4.16m x 3.48m)

**Conservatory**

29' 9" x 10' 2" (9.08m x 3.11m)

**Kitchen**

10' 0" x 11' 11" (3.05m x 3.64m)

**Breakfast Room**

9' 0" x 8' 6" (2.74m x 2.58m)

**Utility Area**

9' 9" x 5' 0" (2.96m x 1.52m)

**Wc**

2' 11" x 5' 11" (0.90m x 1.80m)

**Master Bedroom Suite**

16' 2" x 12' 8" (4.93m x 3.86m)

**En-Suite**

**Dressing Room**

**Landing**

**Bathroom**

**Bedroom**

13' 1" x 10' 6" (4.00m x 3.20m)

**Bedroom**

11' 0" x 14' 1" (3.35m x 4.29m)

**Bedroom**

11' 8" x 11' 4" (3.55m x 3.46m)





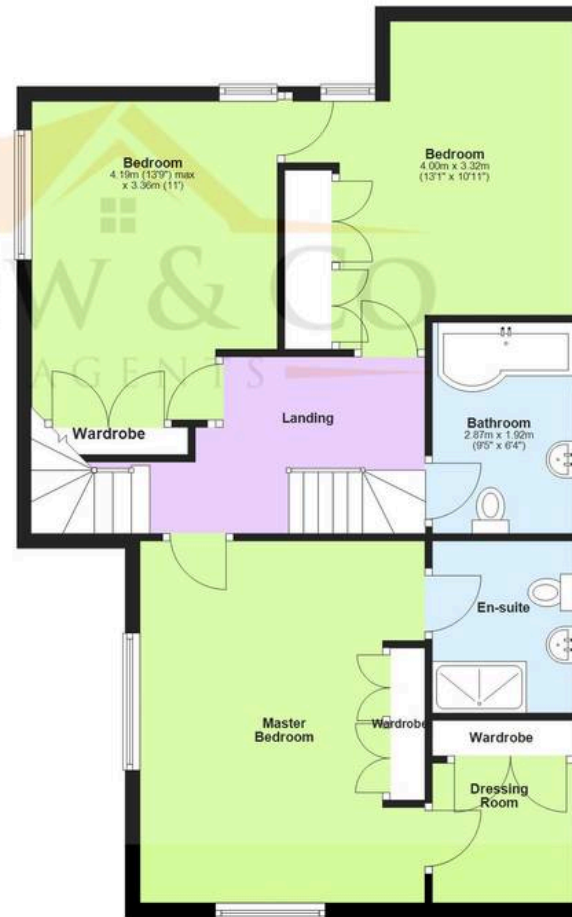
### Ground Floor

Approx. 125.5 sq. metres (1351.1 sq. feet)



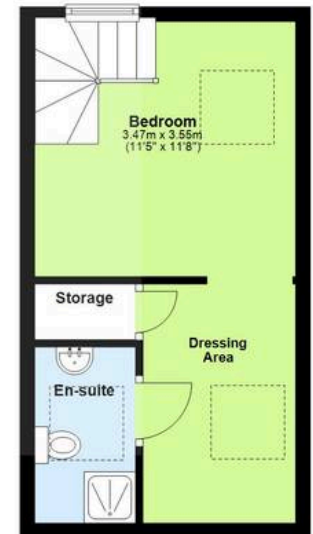
### First Floor

Approx. 72.9 sq. metres (784.4 sq. feet)



### Second Floor

Approx. 24.2 sq. metres (260.5 sq. feet)



Total area: approx. 222.6 sq. metres (2395.9 sq. feet)



## Andrew & Co New Romney

Andrew & Co, 55 High Street - TN28 8AH

01797 362898

[newromney@andrewandco.co.uk](mailto:newromney@andrewandco.co.uk)

[andrewandco.co.uk](http://andrewandco.co.uk)