



2 Primrose View, Armadale

Bathgate

Offers Over **£300,000**



2 Primrose View

Armadale, Bathgate

Welcome to 2 Primrose View, 'The Oakmount' by Bellway, a stunning four-bedroom detached family home situated in the sought-after Southdale development. Perfectly positioned for modern family living, this property combines contemporary design with practicality and is just a short distance from Armadale Train Station and the highly-rated Southdale Primary School.

Upon entering, you'll find a sleek and spacious living room, an ideal space for relaxation and entertaining. The open-plan kitchen and dining area is a real highlight, offering a stylish and functional space for family meals and gatherings. The kitchen features integrated appliances, including a fridge/freezer and dishwasher.

Adjacent to the kitchen is a convenient utility room, which leads directly to a downstairs WC for added practicality.

The property boasts four double bedrooms, offering ample space for family members or guests. The principal bedroom features a modern en-suite shower room, providing a private and luxurious retreat.

The main bathroom serves the rest of the family, featuring a shower over the bath and a chrome towel rail, ensuring both style and functionality.



Outside, the east-facing rear garden is a private haven, designed for both relaxation and entertaining. The garden includes a **decked patio area**, perfect for enjoying the sun until the early evening. Additionally, a hot tub and pergola area offers a luxurious touch and can remain with the sale, allowing you to enjoy outdoor living to its fullest.

Additional features include a **double driveway** and integrated garage, offering ample parking and storage.

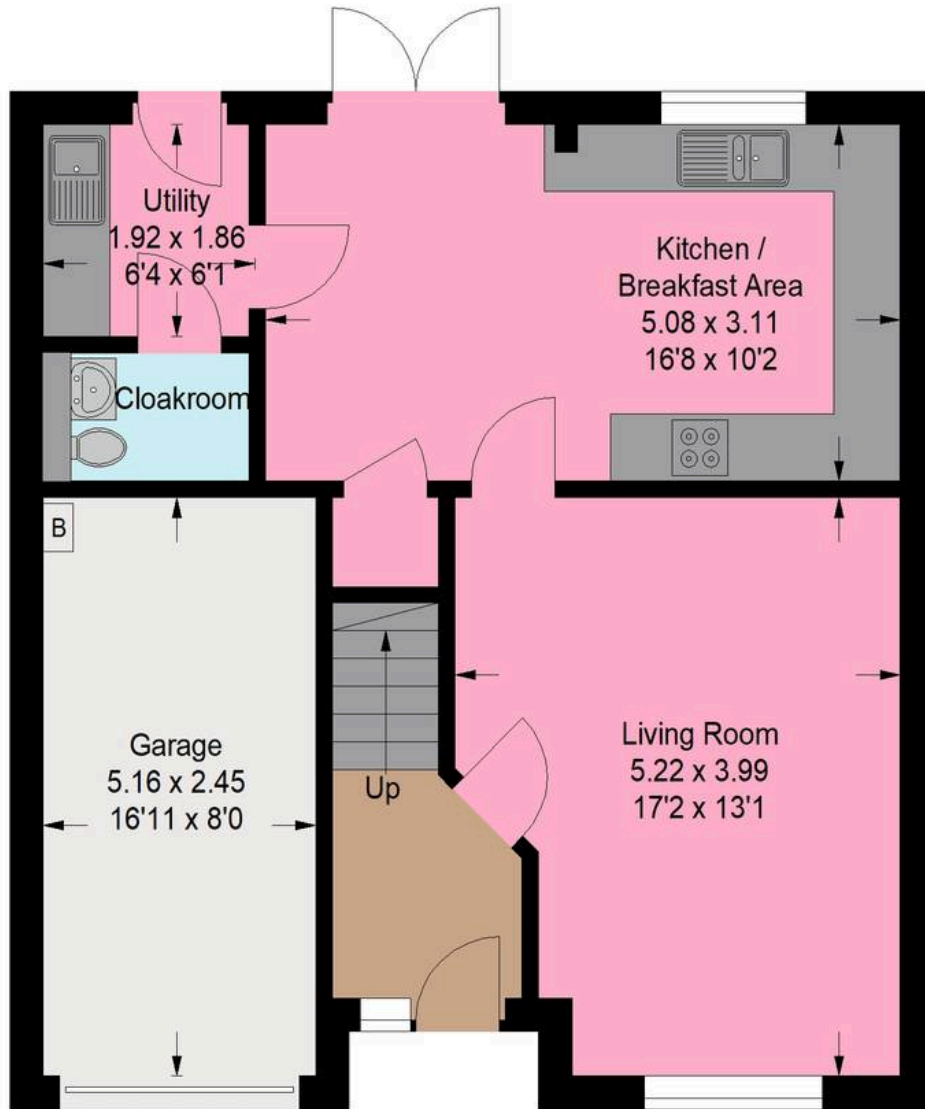
Nature enthusiasts and families will love the proximity to **Polkemmet Country Park**, just a short drive away, where you can enjoy tranquil woodland walks, riverside trails, picnic areas, and a play park for children.

This beautifully designed home combines style, comfort, and convenience, making it a perfect choice for families. Don't miss the opportunity to make **The Oakmont** your forever home!

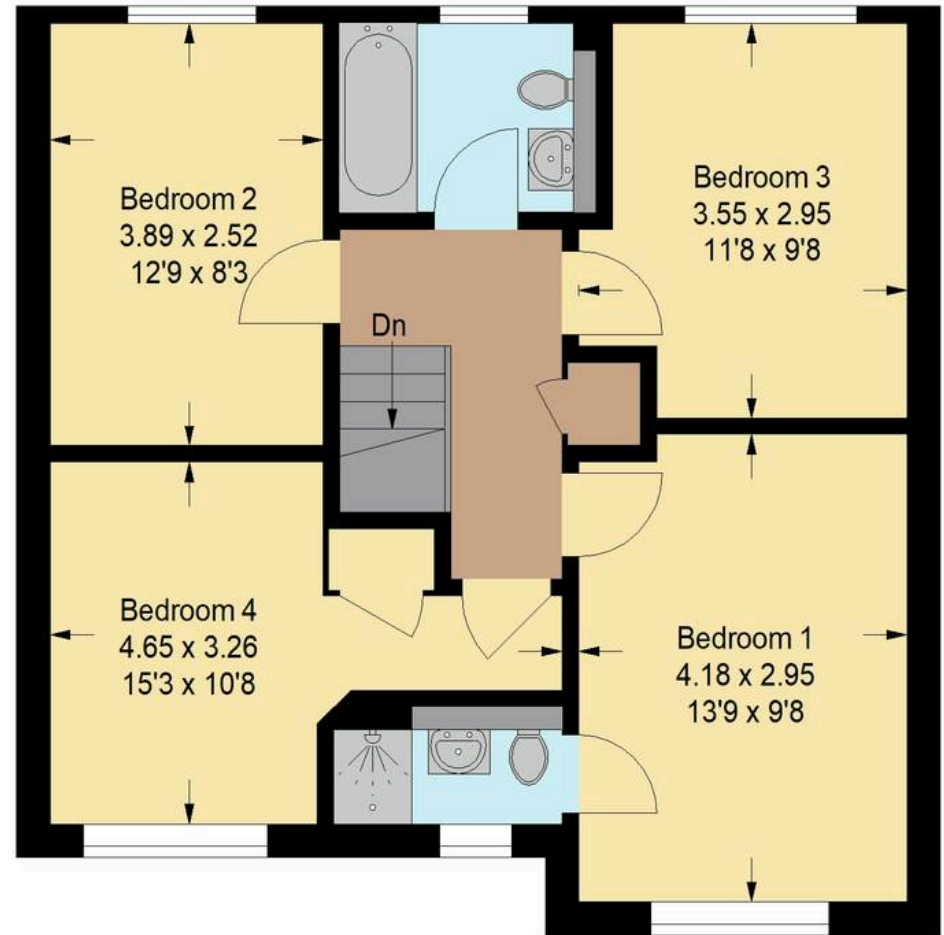




Approximate Gross Internal Area = 108.6 sq m / 1169 sq ft
Garage = 13.0 sq m / 140 sq ft
Total = 121.6 sq m / 1309 sq ft



Ground Floor



First Floor



Bridges Properties

94 West Main Street, Whitburn - EH47 0QU

01501519435

info@bridges-properties.co.uk

www.bridges-properties.co.uk/

