



94a High Street, Lydd

Romney Marsh

£240,000





## 94a High Street

Lydd, Romney Marsh

Charming 2-bed detached home in Lydd, ideal for first-time buyers. Features spacious living room, modern kitchen, cloakroom, 2 double bedrooms, shower room. Generous rear garden, driveway parking. Close to shops, schools. 558 sqft. Book a viewing now!

Council Tax band: C

Tenure: Freehold

EPC Energy Efficiency Rating: B

EPC Environmental Impact Rating: B

- Detached Home
- Close to town centre
- Fully Guaranteed
- Two Bedroom
- Kitchen/Diner
- Rear Garden
- Ideal First Home





**Entrance Hall**

**Living Room**

12' 8" x 9' 5" (3.87m x 2.87m)

**Kitchen**

12' 8" x 10' 2" (3.87m x 3.10m)

**Wc**

**Bedroom**

12' 8" x 9' 11" (3.87m x 3.02m)

**Bedroom**

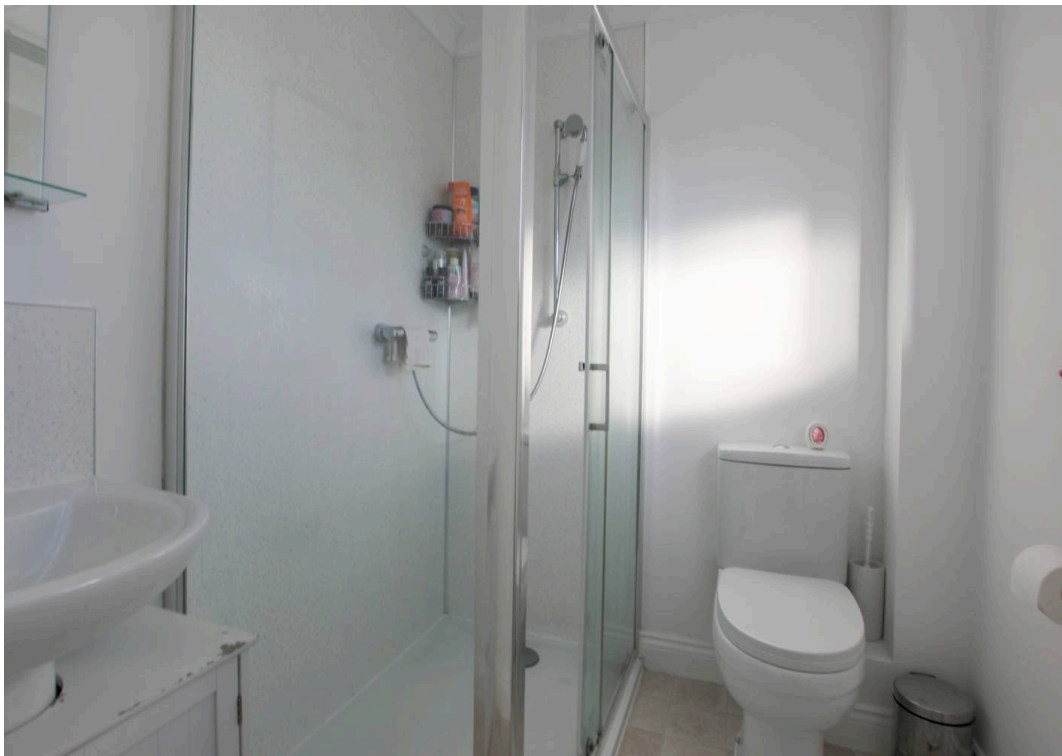
9' 1" x 9' 11" (2.76m x 3.02m)

**Shower Room**

5' 5" x 7' 4" (1.65m x 2.23m)



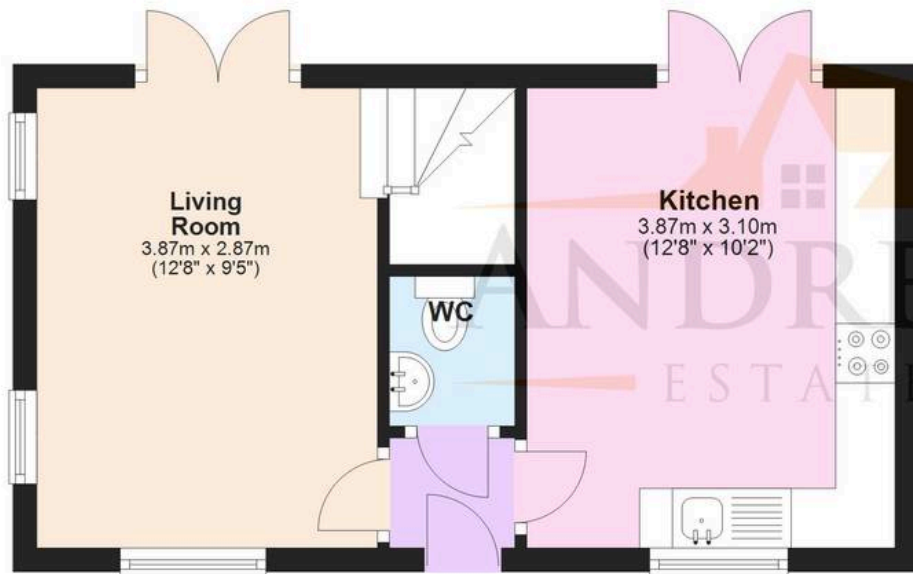






## Ground Floor

Approx. 28.0 sq. metres (300.9 sq. feet)



## First Floor

Approx. 23.9 sq. metres (257.1 sq. feet)



**Total area: approx. 51.8 sq. metres (558.0 sq. feet)**

Plans are for layout purposes only and are not drawn to scale, with any doors, windows and other internal features merely intended as a guide.

Plan produced using PlanUp.





## Andrew & Co New Romney

Andrew & Co, 55 High Street - TN28 8AH

01797 362898

[newromney@andrewandco.co.uk](mailto:newromney@andrewandco.co.uk)

[andrewandco.co.uk](http://andrewandco.co.uk)