



43 Levine Avenue, Blackpool
Blackpool

Offers Over **£115,000**

43 Levine Avenue

Blackpool

We are pleased to offer this 3-bedroom end of terrace house with no onward chain in a sought-after residential area. The property is ideally situated within close proximity to local schools, shops, and amenities, making it an ideal choice for families and professionals alike.

The ground floor comprises an entrance hall leading to a lounge, a well-appointed kitchen, a double bedroom, and a bathroom. Upstairs, there are two additional bedrooms and a three-piece suite bathroom, providing ample space for comfortable living. The property benefits from Gas Central Heating and uPVC Double Glazing, ensuring a comfortable living environment year-round.

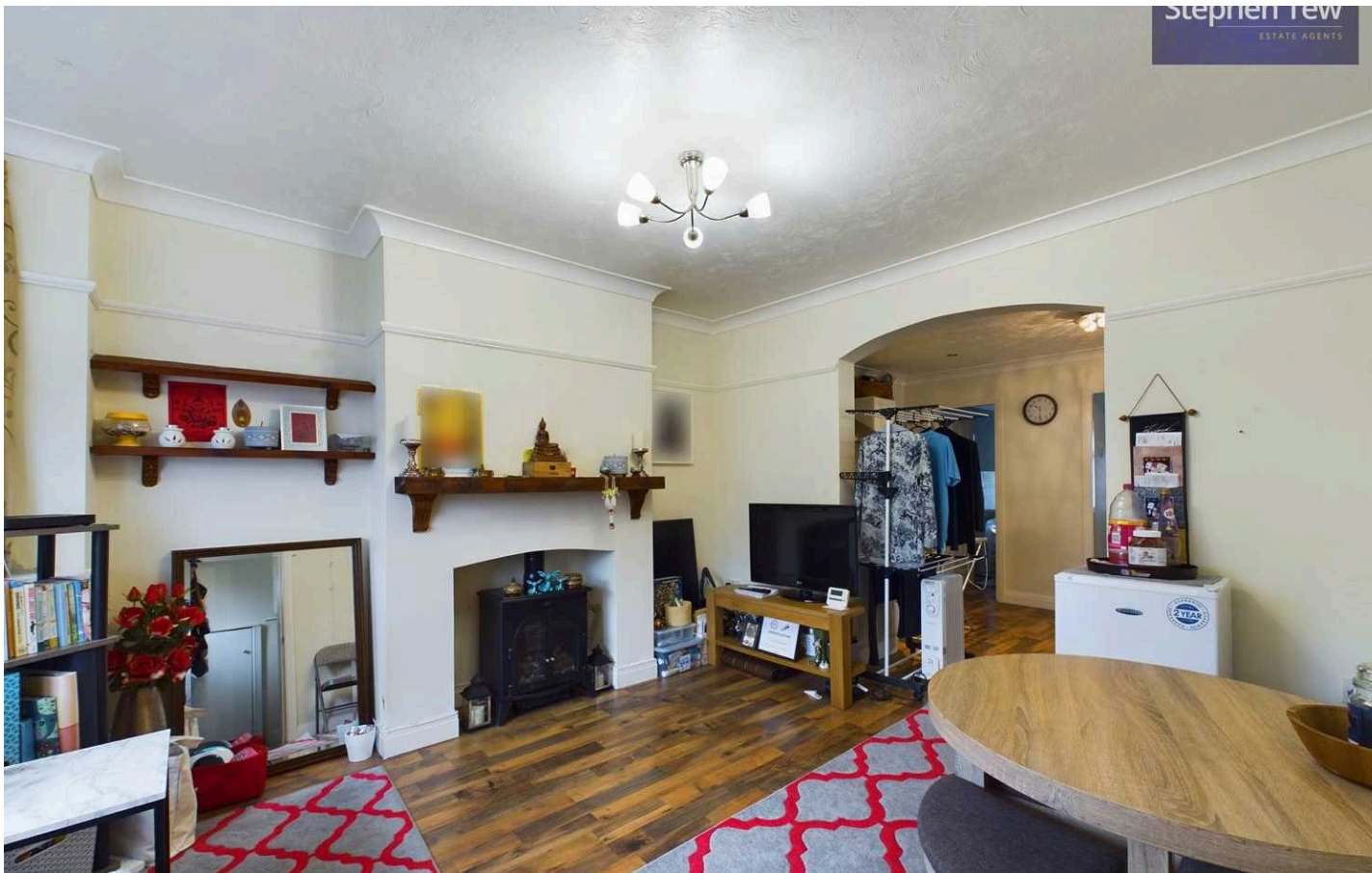
The property also benefits from a shared driveway and gardens to the front and rear, offering outdoor space for relaxation and entertaining.

Council Tax band: A

Tenure: Freehold

- No Onward Chain
- 3 Bedroom End Terrace In Popular Residential Area
- Within Close Proximity To Local Schools, Shops And Amenities
- Entrance Hall, Lounge, Kitchen, Bedroom And Bathroom To The Ground Floor
- 2 Further Bedrooms And 3 Piece Suite Bathroom To The First Floor
- Shared Driveway, Gardens Front And Rear





Entrance Hall

3' 8" x 3' 3" (1.11m x 0.98m)

Lounge

13' 0" x 10' 11" (3.95m x 3.34m)

Kitchen

9' 0" x 14' 0" (2.74m x 4.26m)

Bedroom 1

8' 4" x 8' 1" (2.54m x 2.46m)

Bathroom

8' 8" x 4' 7" (2.65m x 1.39m)

Landing

6' 11" x 2' 7" (2.10m x 0.79m)

Bedroom 2

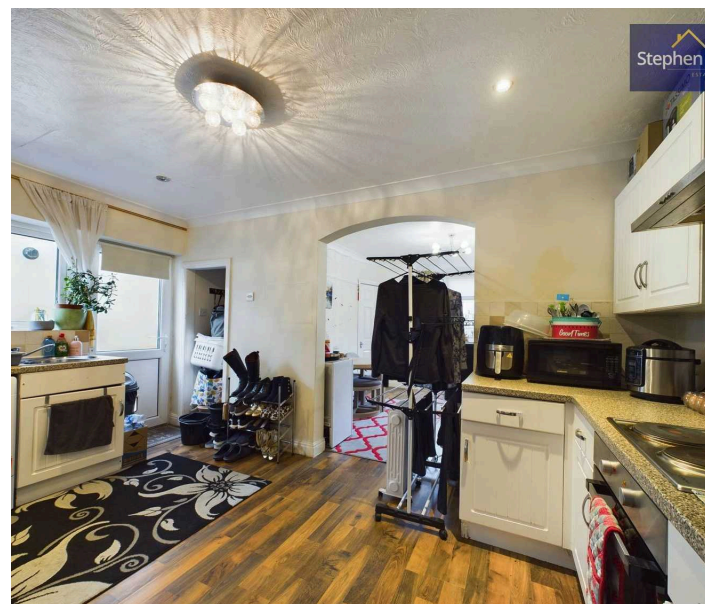
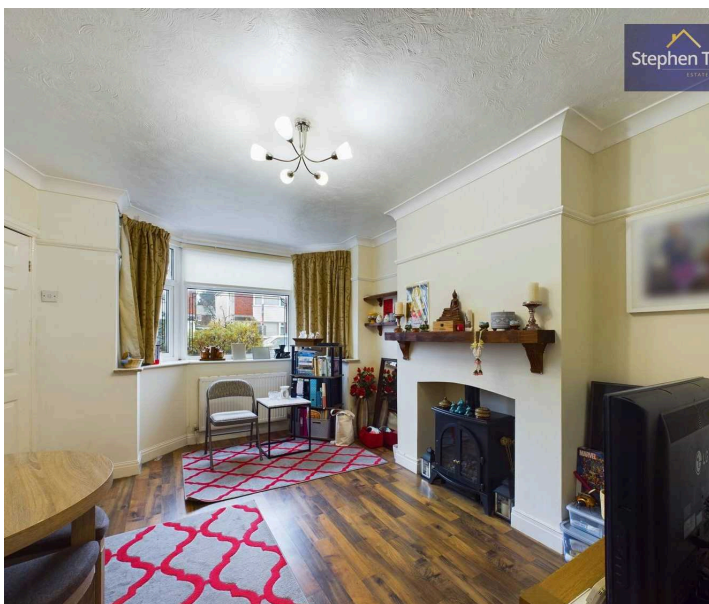
10' 11" x 14' 1" (3.32m x 4.30m)

Bedroom 3

9' 1" x 6' 11" (2.78m x 2.11m)

Bathroom

6' 2" x 6' 11" (1.88m x 2.10m)





Entrance Hall

3' 8" x 3' 3" (1.11m x 0.98m)

Lounge

13' 0" x 10' 11" (3.95m x 3.34m)

Kitchen

9' 0" x 14' 0" (2.74m x 4.26m)

Bedroom 1

8' 4" x 8' 1" (2.54m x 2.46m)

Bathroom

8' 8" x 4' 7" (2.65m x 1.39m)

Landing

6' 11" x 2' 7" (2.10m x 0.79m)

Bedroom 2

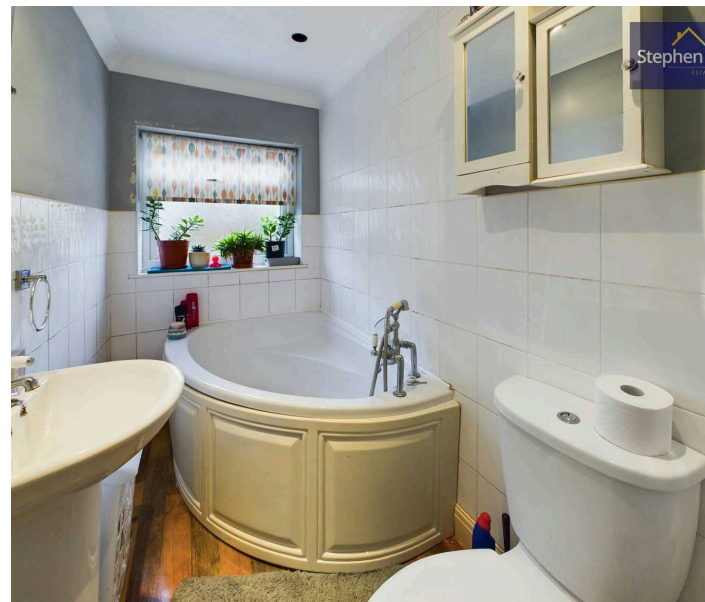
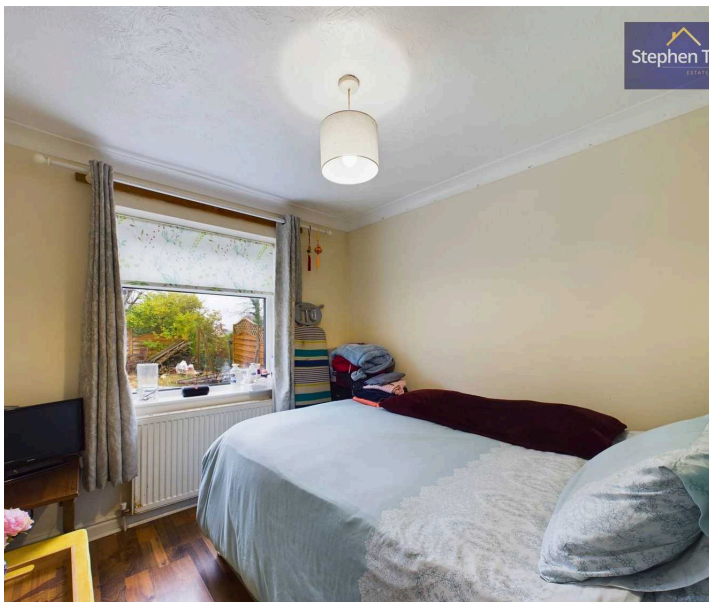
10' 11" x 14' 1" (3.32m x 4.30m)

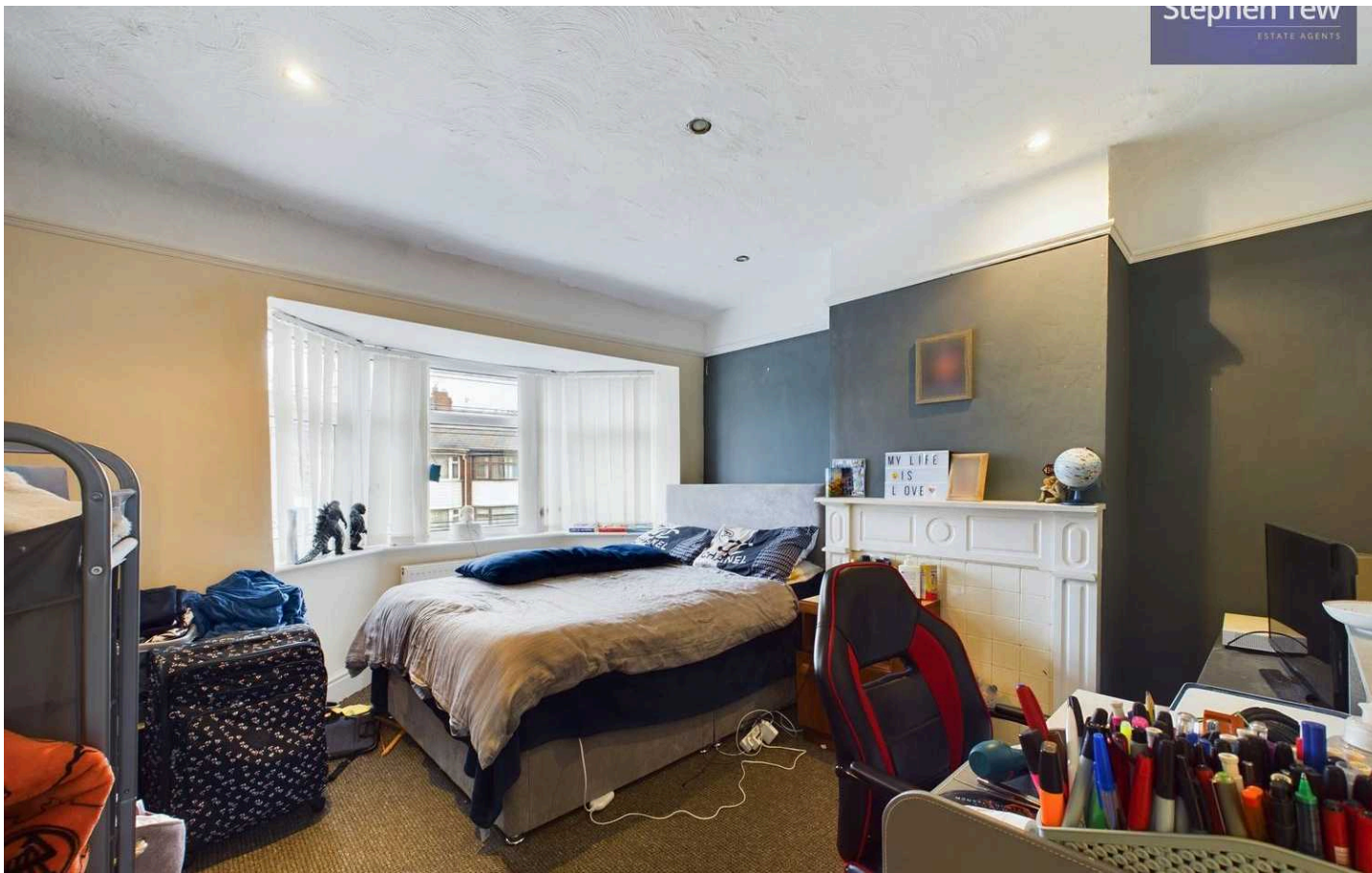
Bedroom 3

9' 1" x 6' 11" (2.78m x 2.11m)

Bathroom

6' 2" x 6' 11" (1.88m x 2.10m)





Stephen Tew
ESTATE AGENTS

Entrance Hall

3' 8" x 3' 3" (1.11m x 0.98m)

Lounge

13' 0" x 10' 11" (3.95m x 3.34m)

Kitchen

9' 0" x 14' 0" (2.74m x 4.26m)

Bedroom 1

8' 4" x 8' 1" (2.54m x 2.46m)

Bathroom

8' 8" x 4' 7" (2.65m x 1.39m)

Landing

6' 11" x 2' 7" (2.10m x 0.79m)

Bedroom 2

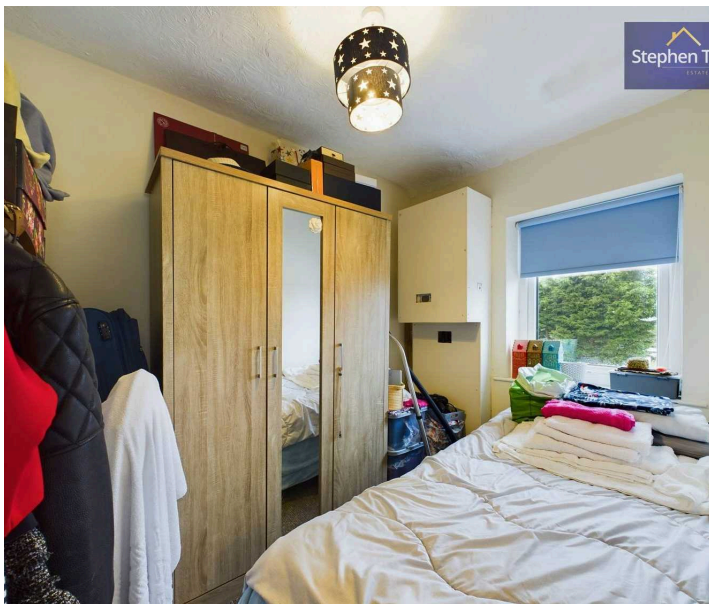
10' 11" x 14' 1" (3.32m x 4.30m)

Bedroom 3

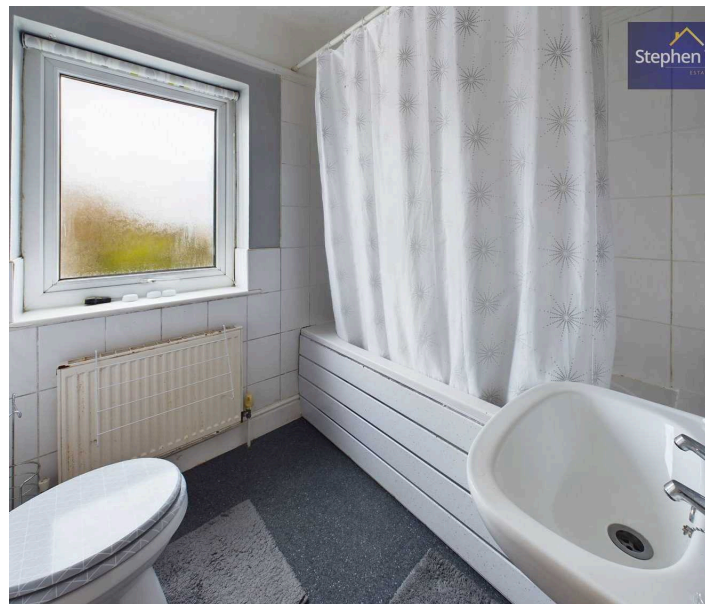
9' 1" x 6' 11" (2.78m x 2.11m)

Bathroom

6' 2" x 6' 11" (1.88m x 2.10m)



Stephen Tew
ESTATE AGENTS



Stephen Tew
ESTATE AGENTS





Stephen Tew Estate Agents

Stephen Tew Estate Agents, 132 Highfield Road - FY4 2HH

01253 401111

info@stephentew.co.uk

www.stephentew.co.uk

