



Coopers

Aesops Court, 31 Valley Road, Stoke Heath, Coventry

£125,000



Aesops Court

31 Valley Road, Coventry, CV2 3JE

A ground floor two bedroom apartment, with parking space. We are informed there are 106 years unexpired with a service charge of £1200pa and ground rent of £150pa. This must be confirmed via solicitors.

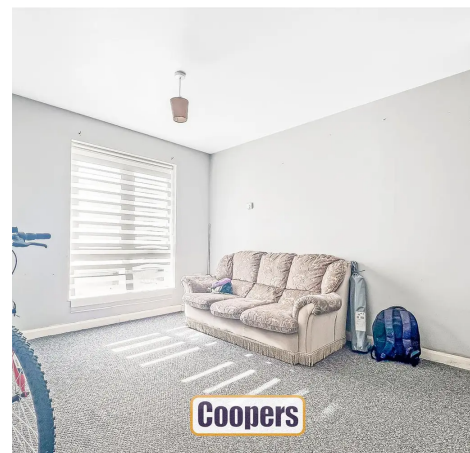
Council Tax band: A

Tenure: Leasehold

EPC Energy Efficiency Rating: C

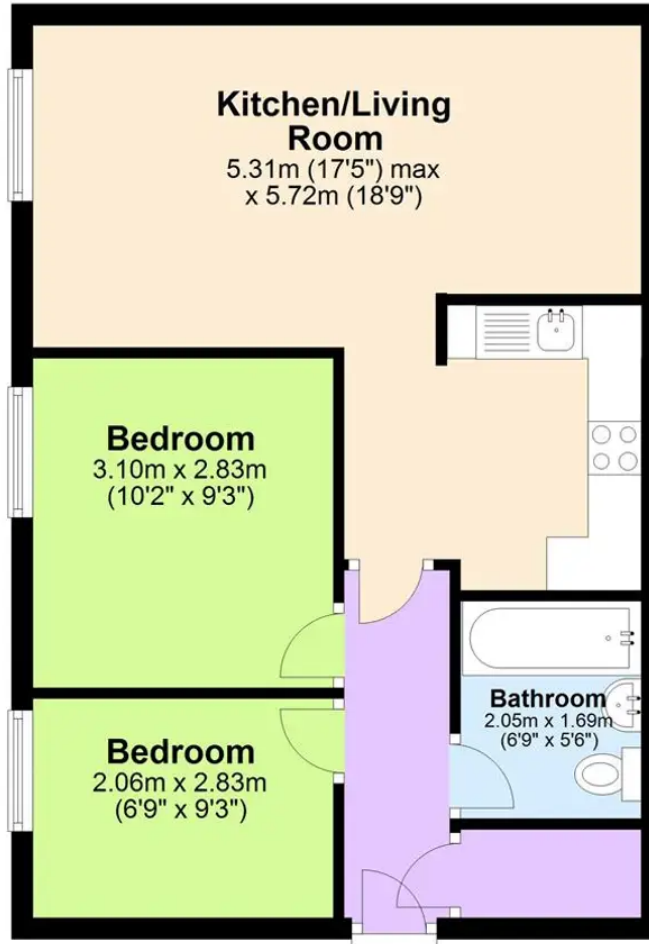
EPC Environmental Impact Rating: B

- Two bedroom ground floor apartment
- Open plan kitchen / living room
- Good sized bathroom
- Large storage cupboard
- Service charge £1200pa and ground rent £150pa
- 106 years unexpired leasehold





Ground Floor



This floor plan is for illustrative purposes only and should be used as such by any prospective purchaser. Whilst every attempt has been made to ensure the accuracy of this plan, measurements of doors, windows, rooms and other items are approximate and no responsibility is taken for any error, omission or mis-statement.
Plan produced using PlanUp.

Coopers Estate Agents

Coopers, 22 New Union Street - CV1 2HN

024 7655 2841 • sales@coopersestateagents.com • www.coopersestateagents.com/

Coopers Chartered Surveyors Ltd, 22 New Union Street, Coventry, West Midlands

CV1 2HN, 024 7655 2841, sales@coopers-cov.com. Company Registration

Number: 6725089 / VAT number: 940 3555 34