



2a The Parade, Claygate  
£1,525 pcm



## 2a The Parade

Claygate, Esher

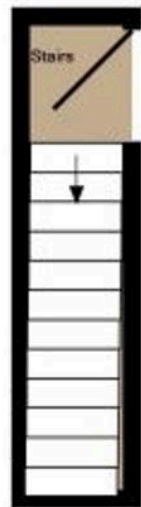
An ideally located, two bedroom maisonette, occupying a really convenient position in the heart of the village and adjacent to all main shops and the train station.

Council Tax band: B

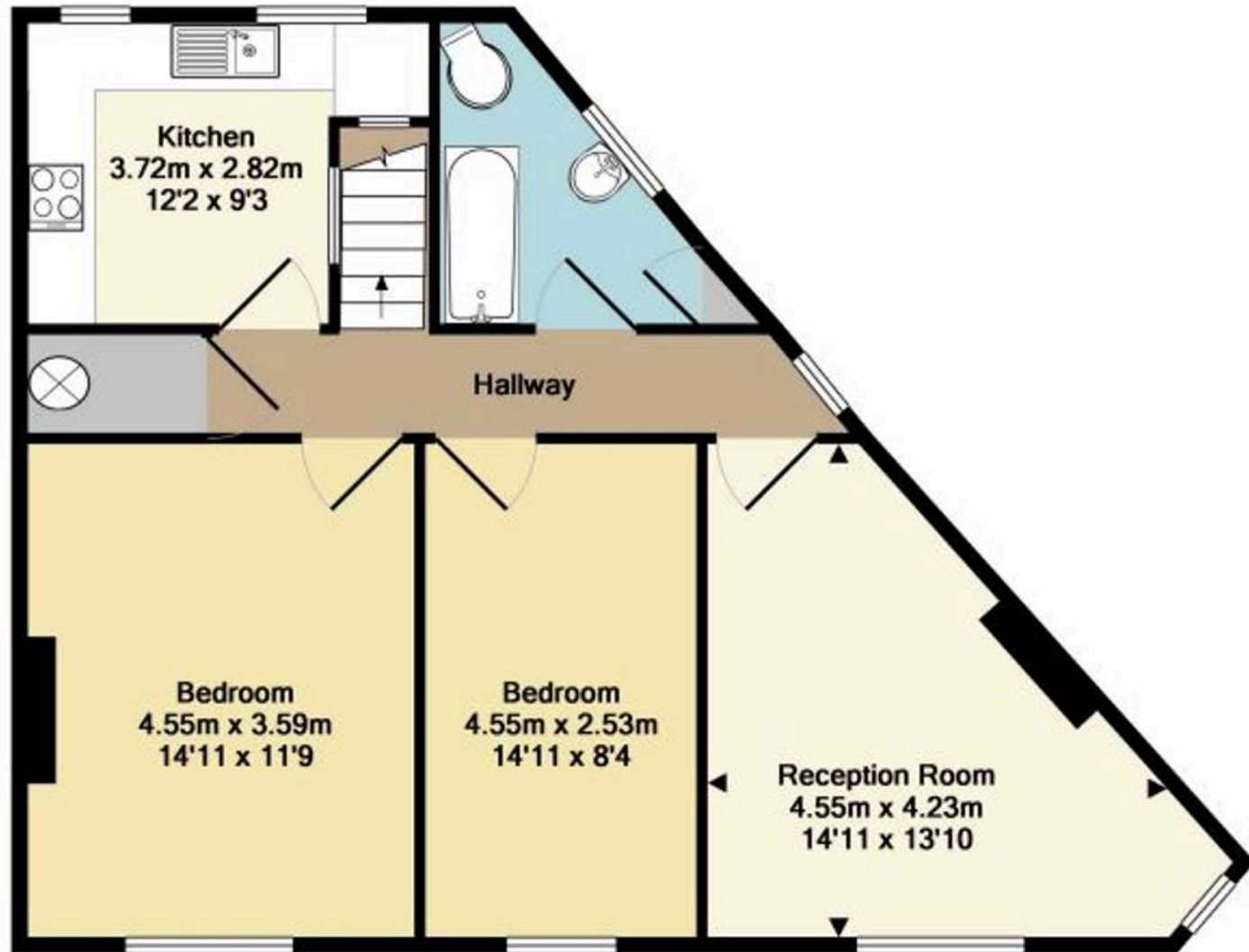
- First floor maisonette
- Two double bedrooms
- Private garden
- Off street parking
- Central village location
- Unfurnished
- Available from 12th December







Entrance floor  
 Approx. Floor  
 Area 3.5 Sq.M.  
 (38 Sq.Ft.)



1st floor  
 Approx. Floor  
 Area 65.2 Sq.M.  
 (701 Sq.Ft.)

Total Approx. Floor Area 68.7 Sq.M. (739 Sq.Ft.)  
 Measurements are approximate. Not to scale. Illustrative purposes only  
 Made with Metropix ©2016