



Cedarwood Place
Maylands Drive
Sidcup
DA14 4BF

Leasehold

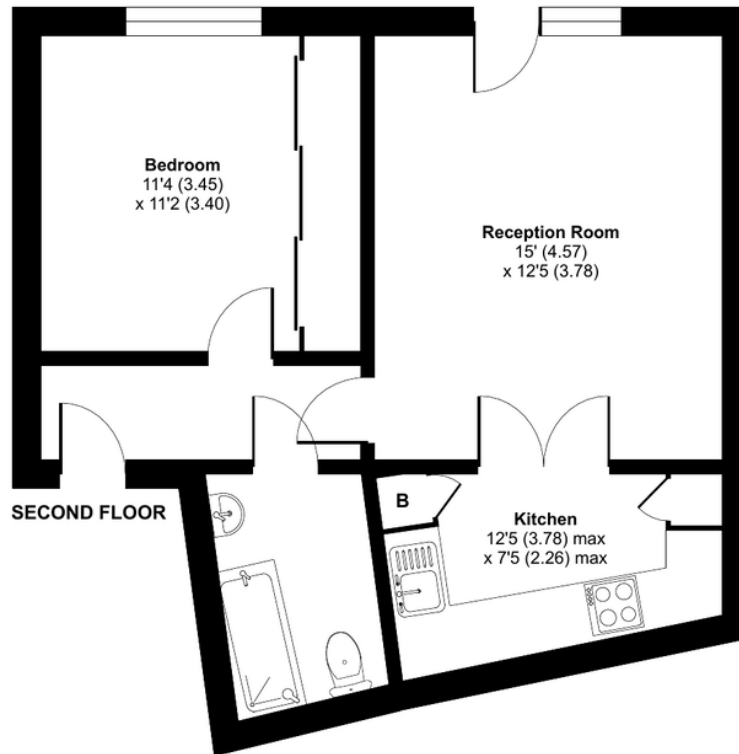
One bedroom first floor apartment
Gated allocated parking and bike shed
Communal roof terrace
Convenient for Albany Park Station
Easy access to shops, schools and bus routes
Video entry phone system
Spacious living room with Juliette style balcony

Local Authority Bexley London Borough
Council
Council Tax Band C
EPC Rating B

Lease 133 years remaining
Service Charge £1,200 per annum
Ground Rent £250 per annum

Cedarwood Place, Maylands Drive, Sidcup, DA14

Approximate Area = 494 sq ft / 45.9 sq m
For identification only - Not to scale



Drewery Property Consultants
128 Station Road
Sidcup
Kent
DA15 7AF

Contact
020 8269 6605
info@drewery.co.uk
www.drewery.co.uk

Agents Note: Whilst every care has been taken to prepare these particulars, they are for guidance purposes only. All measurements are approximate and are for general guidance purposes only and whilst every care has been taken to ensure their accuracy, they should not be relied upon and potential buyers/tenants are advised to recheck the measurements.

