



# 1 MILD MAY CLOSE

Flitch Green, Dunmow, CM6 3FJ

OFFERS IN EXCESS OF £525,000



COMMERCIAL | RESIDENTIAL | LETTINGS

[www.jamesandco.net](http://www.jamesandco.net)

- 5/6 Bedrooms Family Home
- Kitchen/Diner
- Family Bathroom and En Suite
- Ground Floor Cloakroom and Separate WC on the Second floor
- Extended By The Current Owners
- Carport and Garage
- Popular Development
- Close to School and Village Shop







## Property Description

### THE PROPERTY

5/6 Bedroom family home situated on the ever popular 'Fitch Green'. This property has been modernised and extended by the current owners. Benefiting from a carport and garage and a well presented garden.

### THE LOCATION

Located in the ever popular 'Fitch Green Village' within walking distance to the sought after 'Fitch Green Primary school,' and walking distance to the well stocked village Co-op.

Felsted village is in close proximity offering a village shop, two pubs, tea room and a very highly regarded private school.

The historic town of Great Dunmow with its beautiful high street is only a short drive away providing ample shops and restaurants together with schooling for all ages.

Neighbouring towns including Chelmsford, Braintree and Bishop's Stortford are within easy access by car or bus. Easy access to the A120, M11, and Stansted Airport.

### PROPERTY INFORMATION

Freehold.  
Gas Central Heating.  
EPC - Awaiting  
Council Tax Band - E

### ENTRANCE HALL

### CLOAKROOM

### LIVING ROOM

13' 5" x 15' 10" (4.09m x 4.85m)

Max dimensions

### KITCHEN/DINER

15' 10" x 8' 10" (4.84m x 2.70m)

### FIRST FLOOR

### LANDING

### BEDROOM 1

12' 5" x 11' 3" (3.79m x 3.45m)

## EN SUITE

### BEDROOM 2

12' 3" x 9' 7" (3.75m x 2.93m)

### BEDROOM 3

9' 10" x 9' 7" (3.01m x 2.93m)

### BEDROOM 6

10' 8" x 6' 7" (3.27m x 2.02m)

## BATHROOM

## SECOND FLOOR

## LANDING

### BEDROOM 4

12' 1" x 12' 7" (3.70m x 3.84m)

### BEDROOM 5

13' 0" x 9' 8" (3.97m x 2.96m)

## SEPARATE WC

## OUTSIDE

Well presented rear garden.

## CARPORT AND GARAGE

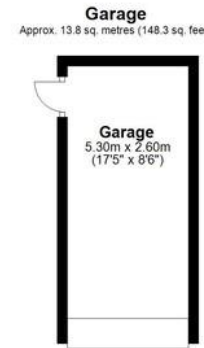
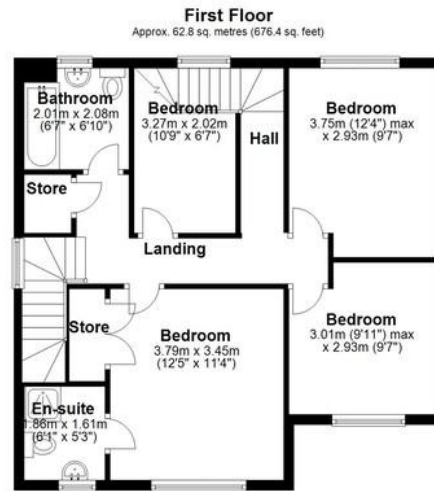
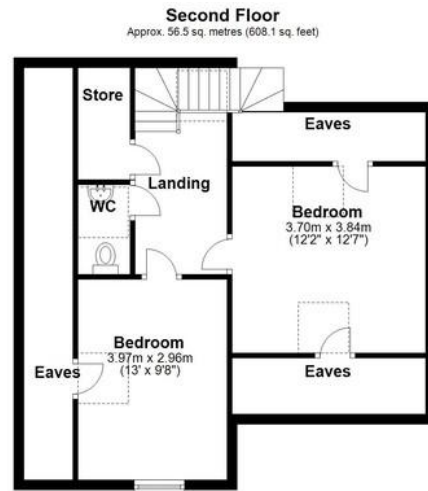












Total area: approx. 189.6 sq. metres (2040.5 sq. feet)

All measurements have been taken as a guide to prospective buyers only and are not precise. This plan is for illustrative purposes only and no responsibility for any error, omission or misstatement. The services, systems and appliances shown have not been tested and no guarantee as to their operability or efficiency can be given. Measurements may have been taken from the widest area and may include wardrobe/cupboard space. No guarantee is given to any measurements including total areas. Buyers are advised to take their own measurements.  
Plan produced using PlanIt

Mildmay Close, Little Dunmow

**COUNCIL TAX BAND**

Tax band E

**TENURE**

Freehold

**LOCAL AUTHORITY**

Uttlesford District Council

Agents Note: Whilst every care has been taken to prepare these sales particulars, they are for guidance purposes only. All measurements are approximate and for general guidance purposes only and whilst every care has been taken to ensure their accuracy, they should not be relied upon and potential buyers are advised to recheck the measurements



4 Stortford Road, Dunmow, Essex, CM6 1DA

01371 876678

info@jamesandco.net

www.jamesandco.net

