



Effield Grove

Sidcup
DA14 6LN

Leasehold

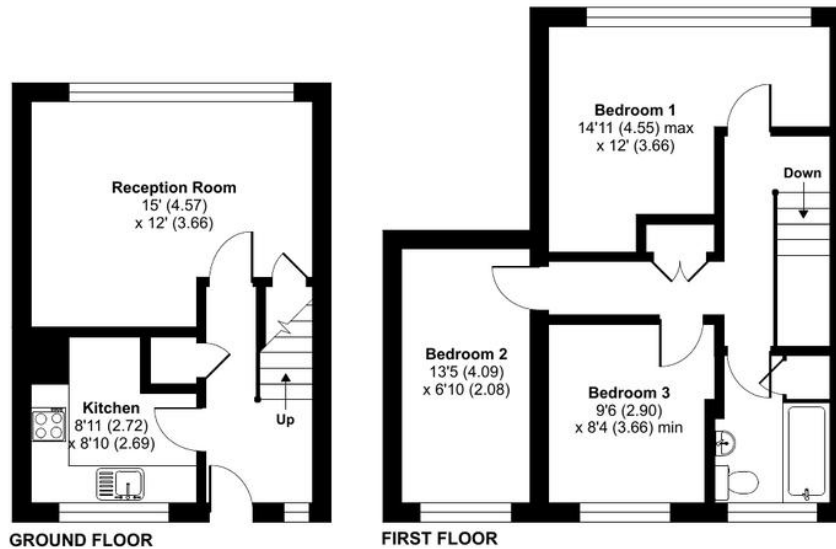
3 bedroom split level, first floor flat
Close to local amenities including Sidcup station
Allocated parking space to the rear
Communal gardens front and rear
Chain Free
Two double and one single bedroom
Ideal first purchase

Local Authority Bexley London Borough
Council
Council Tax Band C
EPC Rating C

Lease 990 years remaining
Service Charge £1,401.48 per annum
Ground Rent £10 per annum

Etfield Grove, Sidcup, DA14

Approximate Area = 805 sq ft / 74.8 sq m
For identification only - Not to scale



Drewery Property Consultants
128 Station Road
Sidcup
Kent
DA15 7AF

Contact
020 8269 6605
info@drewery.co.uk
www.drewery.co.uk

Agents Note: Whilst every care has been taken to prepare these particulars, they are for guidance purposes only. All measurements are approximate and are for general guidance purposes only and whilst every care has been taken to ensure their accuracy, they should not be relied upon and potential buyers/tenants are advised to recheck the measurements.