



MILE



Hillside, London NW10

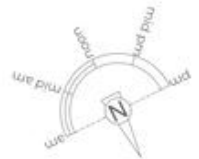
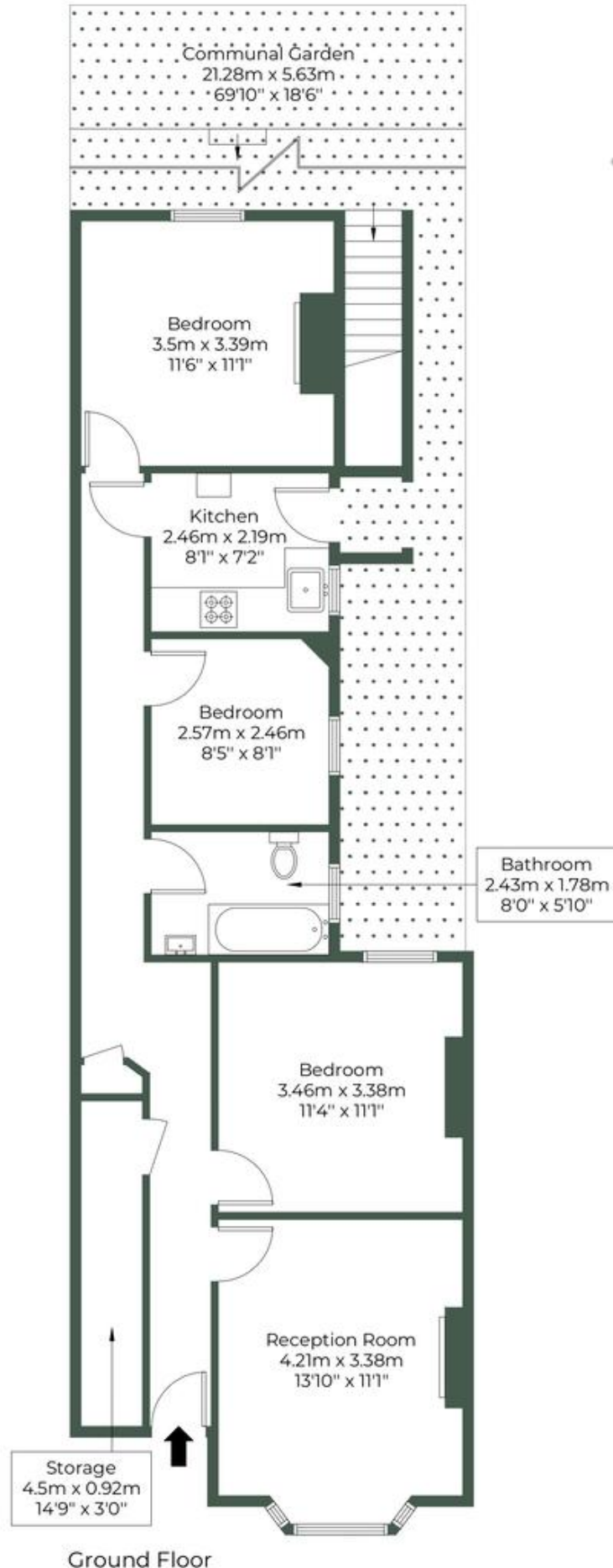
£2,000 pcm

Welcome to Hillside; a well presented 3 bedroom ground floor flat with a share of the garden.

- 3 Bedrooms
- Outside space
- Spacious
- Own entrance
- Ground floor flat
- Close to local shops and amenities
- Close proximity to the North Circular
- Good transport links
- Good condition
- Natural Light

HILLSIDE, NW10 8LJ

Approximate Gross Internal Area = 73.2 sq.m / 788 sq.ft



Ground Floor



MONEY LAUNDERING REGULATIONS 2003: Intending purchasers will be asked to produce identification documentation at a later stage and we would ask for your co-operation in order that there will be no delay in agreeing the sale.

General: While we endeavour to make our sales particulars fair, accurate and reliable, they are only a general guide to the property and, accordingly, if there is any point which is of particular importance to you, please contact the office and we will be pleased to check the position for you, especially if you are contemplating travelling some distance to view the property.

Measurements: These approximate room sizes are only intended as general guidance. You must verify the dimensions carefully before ordering carpets or any built-in furniture.

Services: Please note we have not tested the services or any of the equipment or appliances in this property, accordingly we strongly advise prospective buyers to commission their own survey or service reports before finalising their offer to purchase.