



SEQUOIA MEADOWS

JACKTON

KINLOCH APARTMENTS
FLOORPLANS



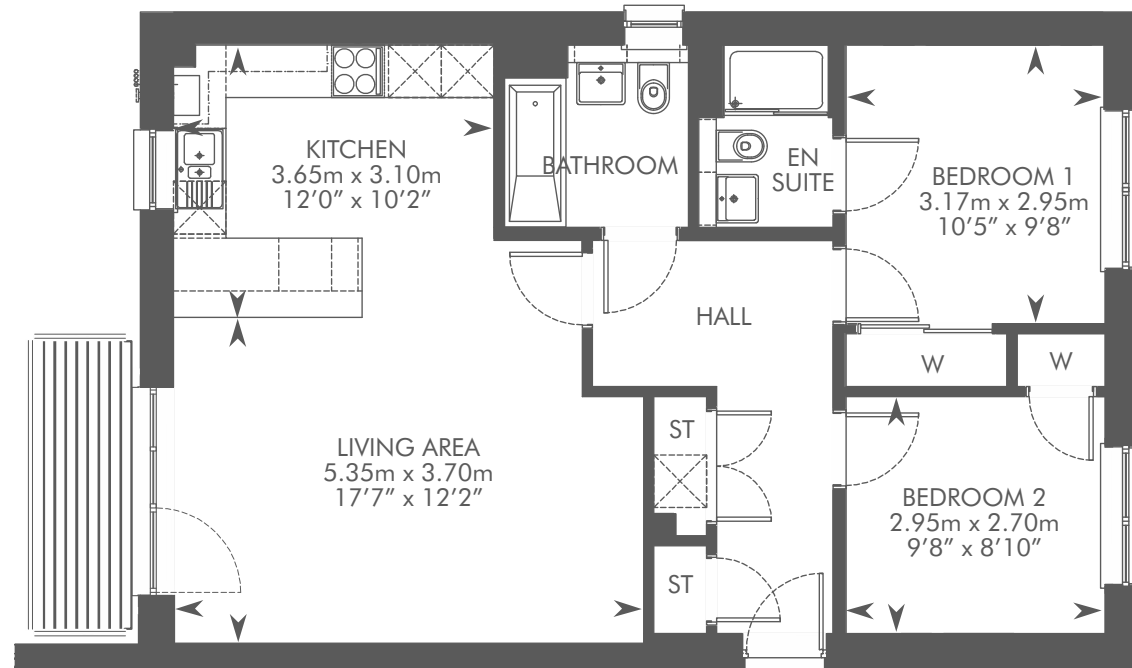
SEQUOIA MEADOWS - JACKTON



The development layout is not drawn to scale and is for general guidance only. Road layouts, pathways, parking bays and external treatments may differ. Landscaping is indicative only. Please confirm the most up-to-date details with our Sales Consultant prior to reservation.

APARTMENT TYPE A

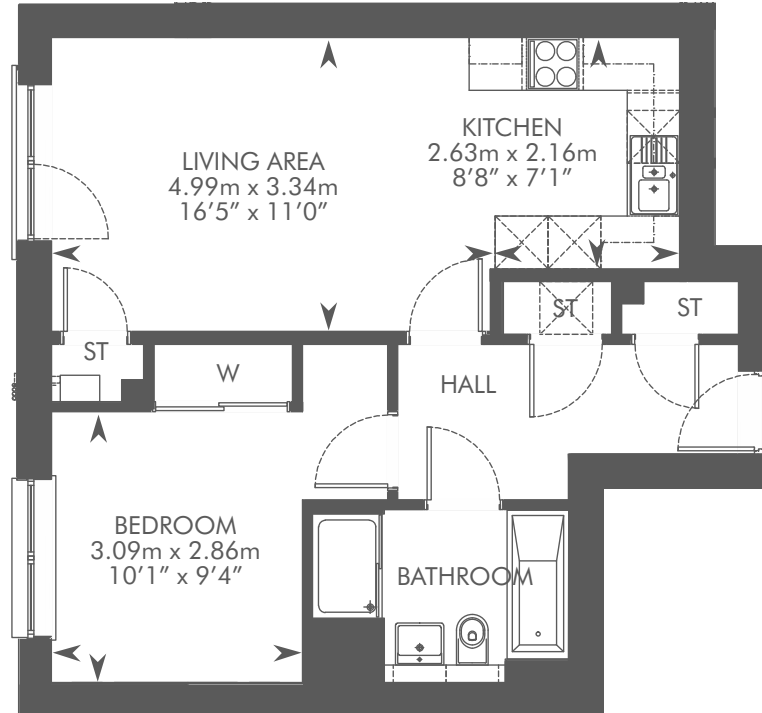
2 BEDROOM APARTMENT



Please Note: Bathroom window in the following plots only 159, 165, 169, 173

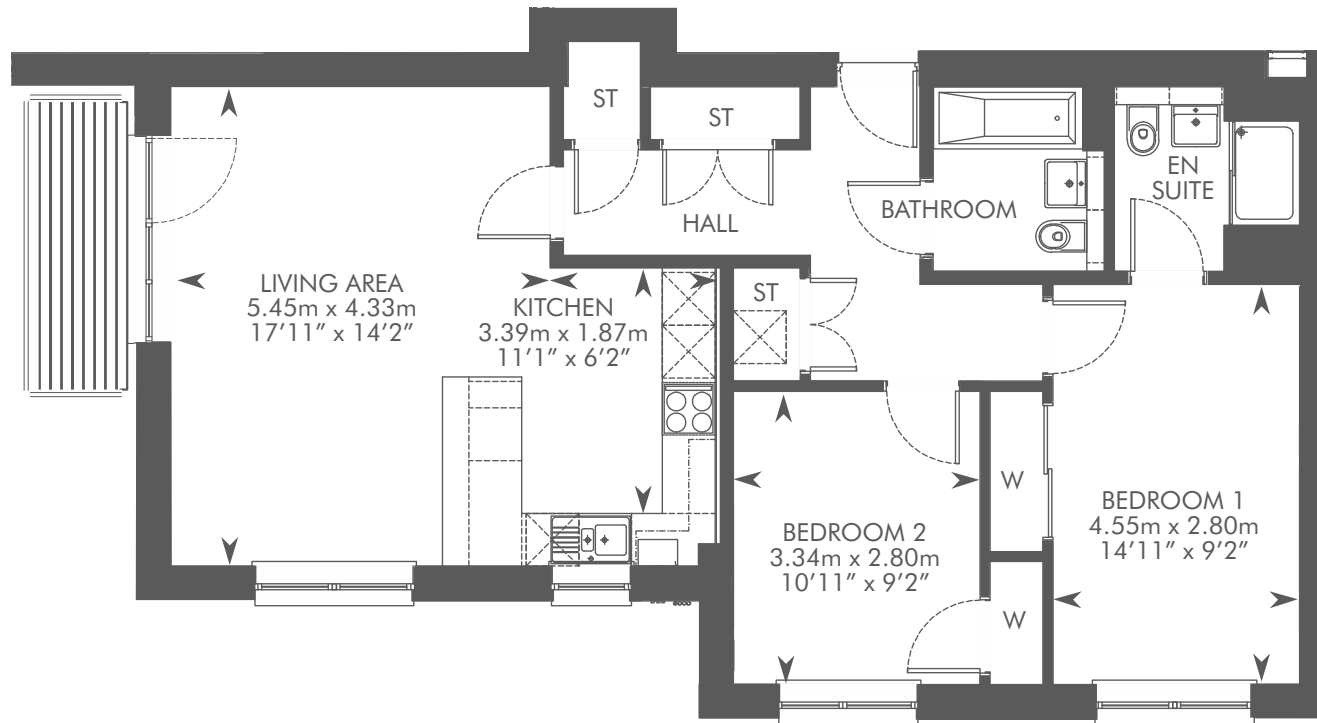
APARTMENT TYPE B

1 BEDROOM APARTMENT



APARTMENT TYPE C

2 BEDROOM APARTMENT



KINLOCH APARTMENTS

APARTMENT TYPE A

Ground Floor – Plots 153, 155, 162, 165

First Floor – Plots 156, 158, 166, 169

Second Floor – Plots 159, 161, 170, 173

APARTMENT TYPE B

Ground Floor – Plots 154, 164

First Floor – Plots 157, 168

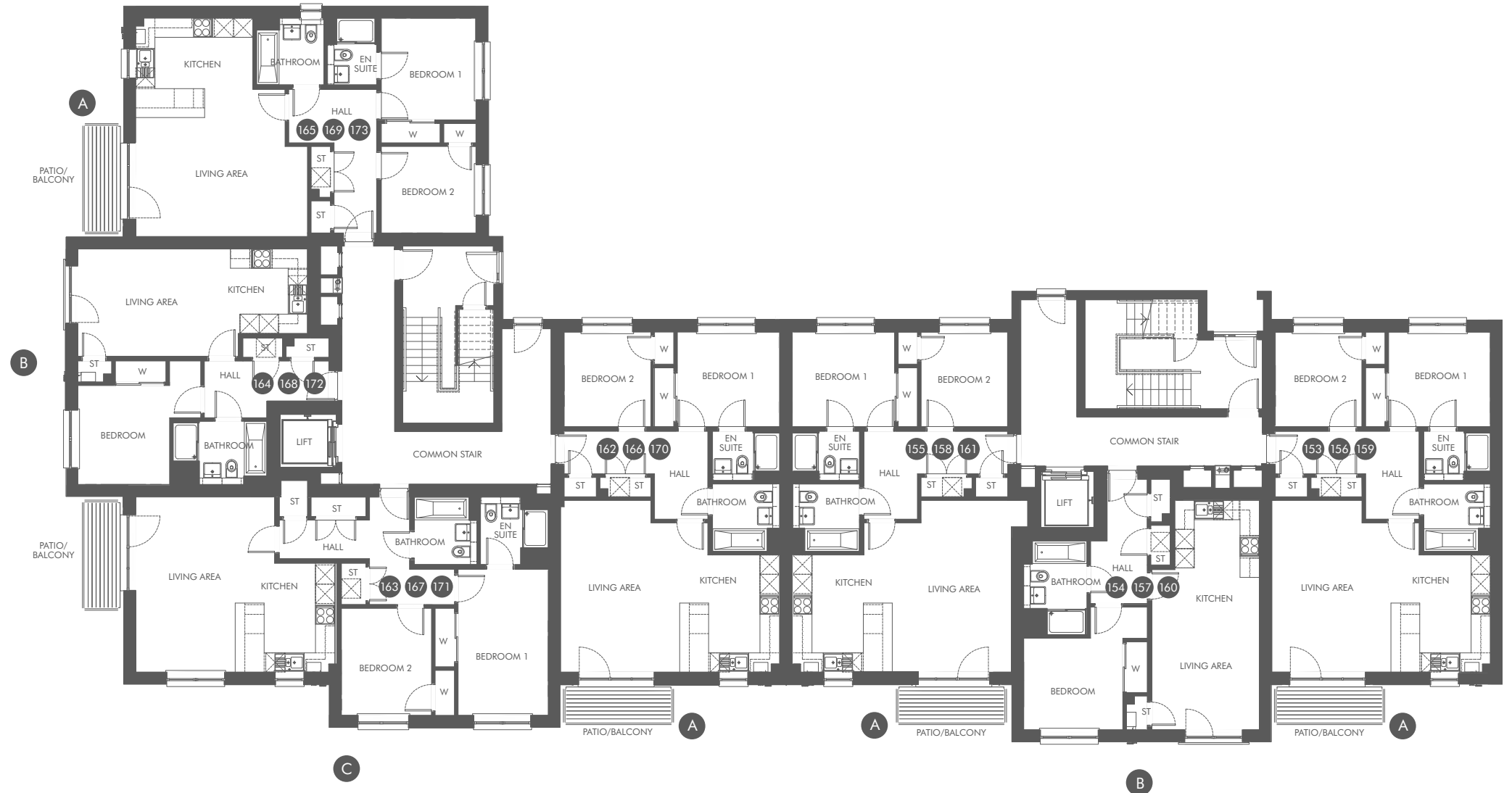
Second Floor – Plots 160, 172

APARTMENT TYPE C

Ground Floor – Plot 163

First Floor – Plot 167

Second Floor – Plot 171





CALA.CO.UK



CALA HOMES, SEQUOIA MEADOWS, OFF EAGLESHAM ROAD, JACKTON, G75 8RW

IMPORTANT NOTICE TO CUSTOMERS: The Consumer Protection from Unfair Trading Regulations 2008. CALA Homes (West) Limited operates a policy of continual product development and the specifications outlined in this brochure are indicative only. CALA reserves the right to implement minor changes to the sizes and specifications shown on any plans or drawings in this brochure without warning. Where alterations to the design, construction or materials to be used in the construction of the property would materially alter the internal floor space, appearance or market value of the property, we will ensure that these changes are communicated to potential purchasers. Whilst these particulars are prepared with all due care for the convenience of intending purchasers, the information is intended as a guide. The computer generated images and photographs do not necessarily represent the actual finishings/elevation or treatments, landscaping, furnishings and fittings at this development. Floor plans, dimensions and specifications are correct at the time of print. The illustrated location map is a general guide only. Please note that distances and timings referred to in this brochure are approximate and sourced from Google Maps. For information relating to weather in the area of this development, please refer to the Meteorological Office (www.metoffice.gov.uk). Nothing contained in this brochure shall constitute or form part of any contract. Information contained in this brochure is accurate at time of going to press on 20.10.21. CALA (West) Limited, registered in Scotland company number SC222577. Registered office: Johnstone House, 52-54 Rose Street, Aberdeen AB10 1HA: Agent of CALA Management Limited.