



Bridgestone Drive, Bourne End

£219,500



Robertsons

5 Bridgestone Drive

Bourne End, Buckinghamshire

A split level maisonette in this highly sought after riverside village, offered for sale with no upward chain. Entrance hall, Shower room, Sitting room, Kitchen, Bedroom, Electric heating, Double glazing, Allocated parking.

Council Tax band: F

Tenure: Leasehold

Entrance hall

Cupboard housing electric meter, built in storage cupboard

Shower room

Corner shower cubicle housing Aqualisa shower unit, low level W.C., wash hand basin with mixer tap, fitted mirror, heated towel rail, down lighters, part tiled walls, tiled flooring

Sitting room

Stairs to first floor with under stairs storage cupboard, dimmer switch, down lighters, electric heater, two windows to side

Kitchen

Fitted with a range of eye and base level units incorporating stainless steel sink unit with mixer tap, wooden worktops, fitted four ring Hotpoint hob with extractor over, built in Hotpoint oven, built in Neff slim line dishwasher, built in fridge, built in cupboard with space and plumbing for washing machine and fuses, part tiled walls, down lighters, window to side





First floor

Bedroom

With built in storage, two electrically operated velux windows with built in blinds, down lighters, dimmer switch

Parking

There is one allocated parking space



Approximate Gross Internal Area
First Floor = 26.6 sq m / 286 sq ft
Second Floor = 13.1 sq m / 141 sq ft
Total = 39.7 sq m / 427 sq ft

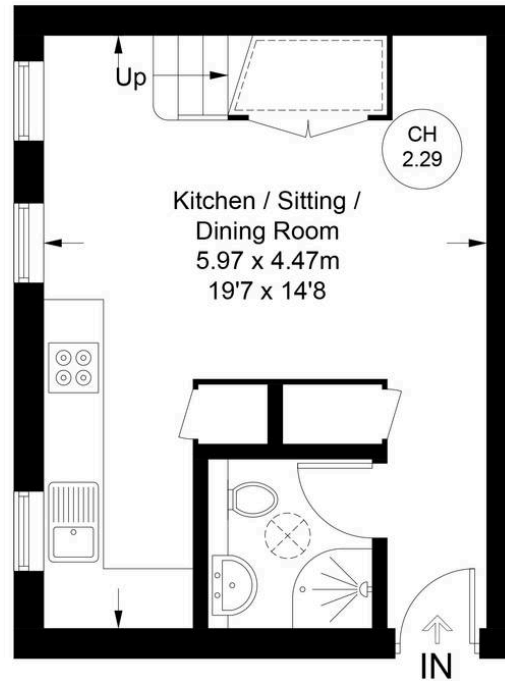


CH
2.29

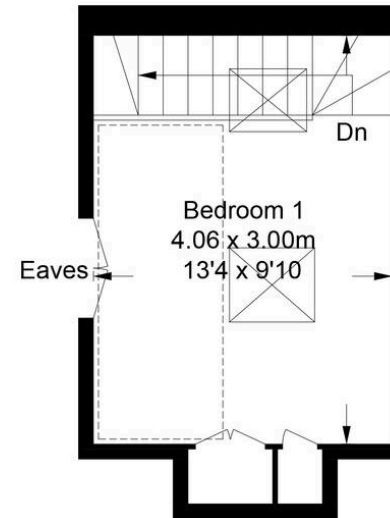
= Ceiling Height



= Reduced headroom below 1.5m / 5'0



First Floor



Second Floor

Floor Plan produced for Robertsons by Media Arcade ©.
Illustration for identification purposes only. Window and door openings are approximate. Whilst every attempt is made to assure accuracy in the preparation of this plan, please check all dimensions, shapes and compass bearings before making any decisions reliant upon them.



Robertsons