





Guide Price £675,000 Freehold

A beautifully presented four bedroom character home with self-contained annexe and wrap around gardens

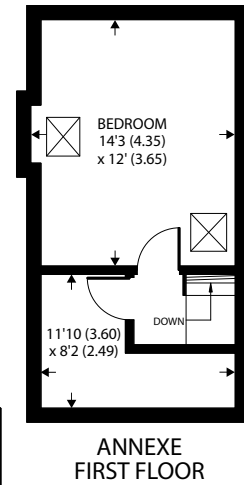
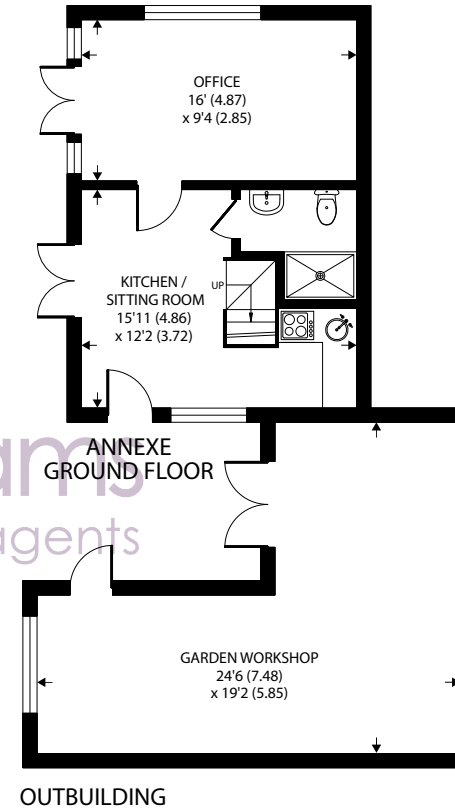
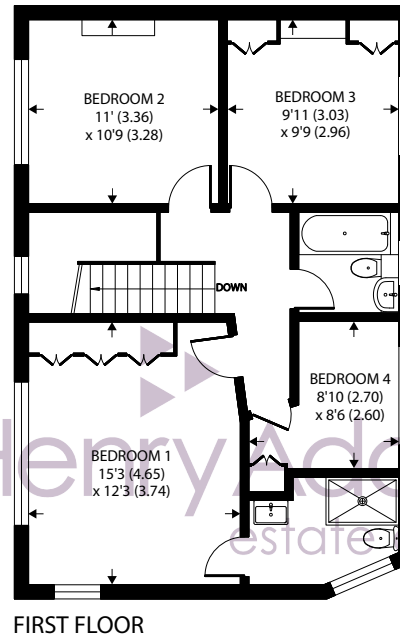
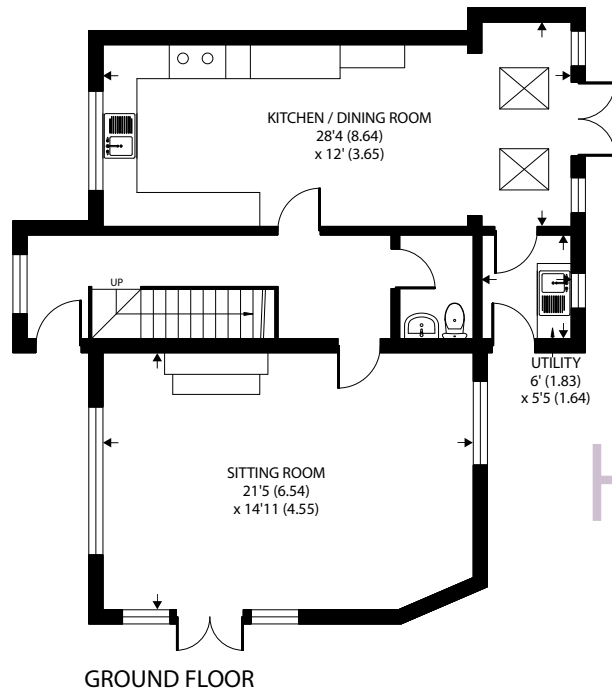
 2  4  2  D/D

- ▶ Large entrance hall with cloakroom
- ▶ Modern kitchen with Rayburn and integrated appliances
- ▶ Family room / dining room with wood burner and French doors
- ▶ Utility room with access to garden
- ▶ Triple aspect sitting room
- ▶ Main bedroom with fitted wardrobes and en-suite
- ▶ Two further double bedrooms and single room or dressing room
- ▶ One bedroom annexe
- ▶ Large workshop
- ▶ Home office

Nestled in a picturesque setting, this charming 4 bedroom semi-detached home built in 1936 is a true gem in the heart of the sought-after neighbourhood. The property welcomes you with a spacious entrance hall featuring a convenient cloakroom, leading to a modern kitchen equipped with a Rayburn stove and integrated appliances. Perfect for entertaining, the room boasts a cosy wood burner and French doors opening onto the garden, while the triple aspect sitting room exudes elegance with an open fire and direct access to the garden. The main bedroom is a tranquil retreat with fitted wardrobes and its own en-suite shower room, accompanied by two additional double bedrooms and a versatile single room or dressing area.

A highlight of this property is the self-contained one-bedroom annexe, offering flexibility with an open-plan sitting room and kitchen area, as well as a separate shower room and an additional study or extra room for various purposes. Outside, the expansive wrap-around garden is a delight for nature enthusiasts, featuring multiple seating areas, a vegetable plot, and a soothing water feature. Ample driveway parking and a large workshop provide practical convenience, making this property a haven for families and those seeking a harmonious blend of indoor-outdoor living. Don't miss the opportunity to call this captivating residence your home.





Approximate Area = 1526 sq ft / 141.7 sq m  
Annexe = 614 sq ft / 57 sq m  
Outbuilding = 333 sq ft / 30.9 sq m  
Total = 2473 sq ft / 229.6 sq m

For identification only - Not to scale



Agents Note - Our particulars are for guidance only and are intended to give a fair overall summary of the property. They do not form part of any contract or offer, and should not be relied upon as a statement or representation of fact. Measurements, areas and distances are approximate only. Photographs may include lifestyle shots and pictures of local views. No undertaking is given as to the structural condition of the property, or any necessary consents or the operating ability or efficiency of any service, system or appliance. Please ask if you would like further information, especially before you travel to the property.



## Location

Thakeham is a quintessential English village with pretty period cottages and homes together with a pub and church. The nearby development of Abingworth Meadows has a village store, Cafe and vet which provides a central hub for the village near the Cricket pitch and a village hall along with a vets. The larger village of Storrington situated at the foot of the South Downs and giving access to the South Downs National Park is just over two miles away and provides a good range of local shops and amenities including a Waitrose Store, library, health centre, dentists together with a wide variety of sports and social clubs. The nearest train station is at Billingshurst approximately 5 miles to the north with services to London Victoria and the coast. The larger centres of Horsham and Worthing are approximately 13 and 12 miles respectively. On the doorstep of Thakeham are a number of lovely walks to enjoy with your four legged friends.

