



Refurbished Industrial Unit

- Near to Woking Town Centre
- Electric Roller Shutter Door 2.5m (W) x 3.5m (H)
- WC Facilities
- Three Phase Power
- 2 Car Parking Spaces



Location

Boundary Business Centre is situated on Boundary Road, close to the junction of Monument Road, approximately half a mile from Six Crossroads roundabout which links to the A320.

Woking town centre is a short walk and provides excellent shopping and cultural facilities. The mainline railway station provides a fast and frequent service to London Waterloo in approximately 28 minutes.

Woking is situated approximately 30 miles south west of central London and 6 miles north of Guildford. The estate is located approximately 1 mile north east of Woking town centre. Junction 11 of the M25 is approximately 3 miles distant and the M3 is approximately 7 miles distant.

Description

The Unit provides newly refurbished, high quality industrial accommodation. The property benefits from WC facilities and 2 carparking spaces.

Accommodation

Name	sq ft	sq m	Availability
Unit	901	83.71	Available
Total	901	83.71	

Terms

New Lease

Rent

£17,119 per annum

Rates & Charges

Estates charge: £1,760 per annum

Rateable value: £12,250

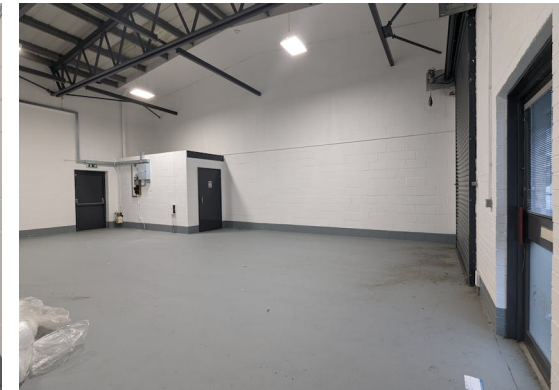
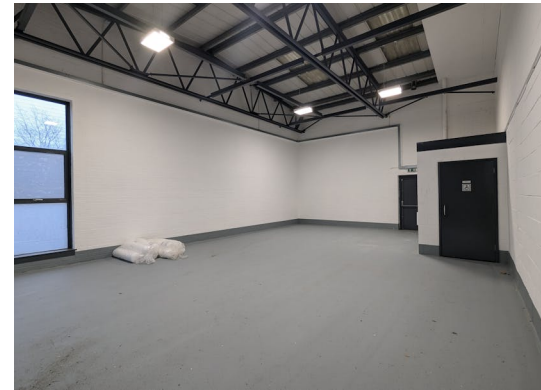
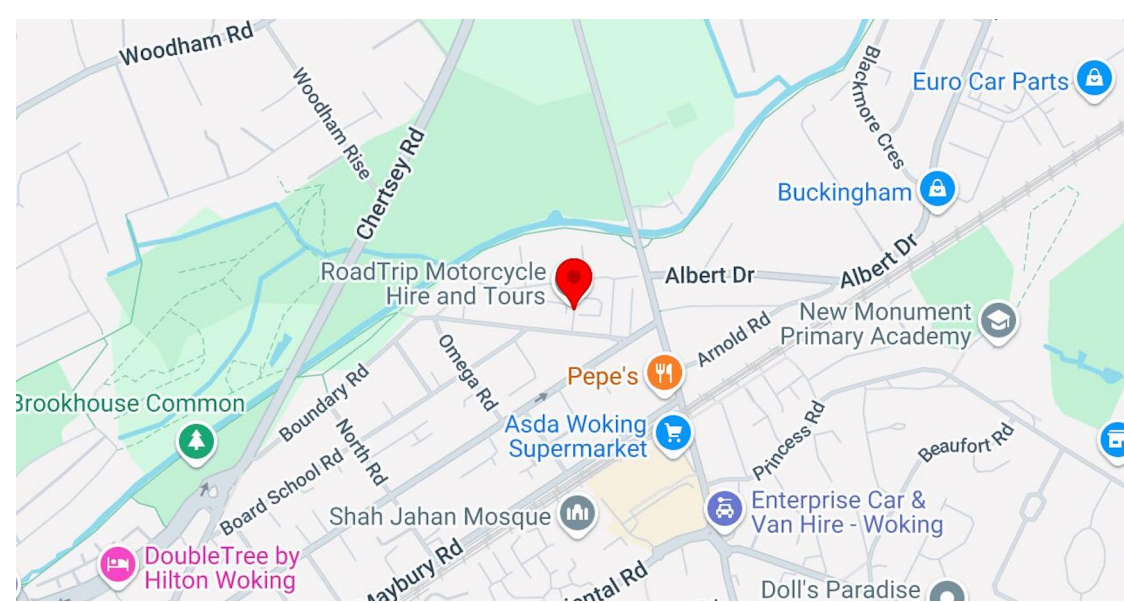
Rates payable: £6,112.75 per annum Small Business Rates Relief may apply for eligible occupiers.

EPC

D (96)

Legal costs

Each party to bear their own legal costs incurred in the transaction.



Contact

Charlie Williams

T: 01483 300 176

M: 07456 899972

E: charlie@owenisherwood.com

owenisherwood.com | 01483 300 176

1 Wey Court, Mary Road, Guildford, Surrey GU1 4QU

These particulars do not constitute, or form any part of, any offer or contract, and whilst all the information given is believed to be correct, all interested parties must satisfy themselves of its accuracy. All prices and rents are quoted exclusive of VAT, unless otherwise stated