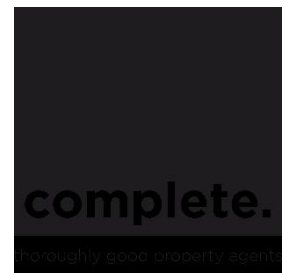




Located within the sought after village of Shaldon and enjoying wonderful holiday facilities is this stunning holiday lodge. The property is beautifully presented throughout to a very high standing and affords stunning coastal views across Teignmouth and Lyme Bay. The accommodation consists of open plan lounge/kitchen/diner, 2 double bedrooms with master en-suite and a bathroom and utility. Off road parking and dual aspect terrace.

Coast View, Torquay Road | Teignmouth | TQ14 0BG





PROPERTY TYPE  
Holiday Lodge



SIZE  
81.8 Sq M



LOCATION  
Shaldon



AGE  
Modern



BEDROOMS  
2



RECEPTION ROOMS  
1



BATHROOMS  
2



WARMTH  
Gas Central Heating



PARKING  
Off Road Parking



OUTSIDE SPACE  
Patio



EPC RATING  
Exempt



COUNCIL TAX BAND  
Exempt



### in a nutshell...

- 2 Double Bedrooms
- En-Suite Shower Room
- Bathroom
- Open Plan Lounge/Kitchen/Diner
- Utility Room
- Panoramic Sea Views
- Private Terrace
- Off Road Parking
- Amazing Site Facilities





## the details...

### DESCRIPTION

Shaldon Retreat is located within Coast View holiday park in the sought after village of Shaldon. The site boasts wonderful facilities to include swimming pool, jacuzzi, gym, spa and restaurant which is open all year round. The lodge itself is immaculately presented throughout and there are simply breath taking views across Teignmouth across to Lyme Bay.

As you enter the lodge, there is an entrance hall with radiator and doors to principal rooms. The open plan lounge/kitchen/diner is wonderfully appointed with a variety of integrated appliances to include fridge/freezer, oven, microwave, hob and wine fridge set within a centre island unit. The lounge and dining areas have double patio doors that lead out to the terrace and enjoy the amazing outlook.

The master bedroom is spacious with fitted wardrobes and this leads into the en-suite. This shower room features a double shower cubicle, 'his and hers' wash basins set into vanity units and low level WC. The second bedroom is also a double and comes complete with fitted furniture. The master bathroom has a modern shower bath with mains shower and feature circular wash basin set within a vanity unit with cupboards below and drawers to the side. There is also a utility room located off the hallway with a fitted washer/dryer.

Outside the lodge is a spacious wood and glass enclosed terrace which is a wonderful place to relax outdoors and enjoy the spectacular outlook. Adjacent to the lodge is an driveway allowing for off road parking.

Please note, this is a holiday lodge and can only be used as a 2nd home.



## what the owner loves most...

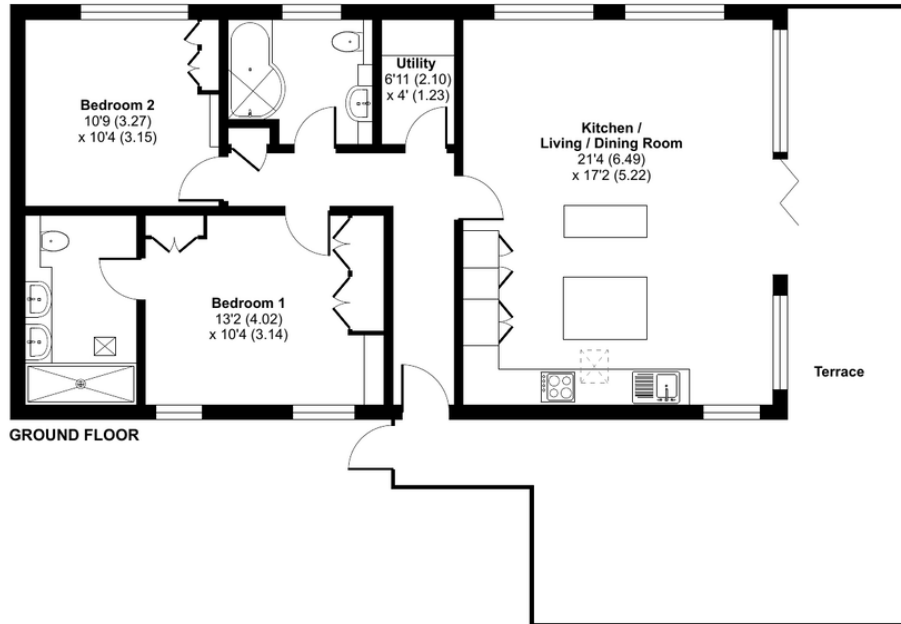
The fantastic site facilities and the stunning sea views. This also feels like a true home from home and has brought us much enjoyment.



## Shaldon Retreat, Coast View Holiday Park, Shaldon, Teignmouth, TQ14

Approximate Area = 881 sq ft / 81.8 sq m

For identification only - Not to scale



Floor plan produced in accordance with RICS Property Measurement 2nd Edition, Incorporating International Property Measurement Standards (IPMS2 Residential). © nchecon 2024. Produced for Ashtons Complete (Complete Property). REF: 1220614



Our note. For clarification we have prepared these sales particulars as a general guide and have not carried out a detailed survey nor tested the services, appliances or fittings. Room sizes should not be relied upon for carpets or furnishings. If there are any important matters which are likely to affect your decision to buy, please contact us before viewing this property. These particulars, whilst believed to be accurate, are set out as a general outline only for guidance and do not constitute any part of an offer or contract. Intending purchasers should not rely on them as statements of representation of fact, but must satisfy themselves by inspection or otherwise as to their accuracy. No person in the employment of Complete Property Services has the authority to make or give any representation or warranty in respect of the property.

**SKETCH PLAN FOR ILLUSTRATIVE PURPOSES ONLY.** All measurements and sizes and locations of walls, doors, window fittings and appliances are shown conventionally and are approximate only and cannot be regarded as being a representation either by the Seller or his Agent. We hope that these plans will assist you by providing you with a general impression of the layout of the accommodation. The plans are not to scale nor accurate in detail. © Unauthorised reproduction prohibited.

As part of the service we offer we may recommend ancillary services to you which we believe will help with your property transaction. We wish to make you aware that should you decide to proceed we will receive a referral fee. This could be a fee, commission, payment or other reward. We will not refer your details unless you have provided consent for us to do so. You are not under any obligation to provide us with your consent or to use any of these services, but where you do you should be aware of the following referral fee information. You are also free to choose an alternative provider. To find out more about this, please speak to a member of the team.



bear in mind...

Type here..

This is a holiday lodge and can only be used as a 2<sup>nd</sup> home.



## the location...

..

Shopping The village centre of Shaldon is only a short distance away

Relaxing Site facilities to include swimming pool and gym

Travel Nearby town of Teignmouth has a railway station

Schools

Please check Google maps for exact distances and travel times.

Property postcode: **TQ14 0BG**

## how to get there...





Need a more complete picture? Get in touch with your local branch...

Tel [01626 870 870](tel:01626870870)  
Email [teignmouth@completeproperty.co.uk](mailto:teignmouth@completeproperty.co.uk)  
Web [completeproperty.co.uk](http://completeproperty.co.uk)

Complete  
13 Wellington Street  
Teignmouth  
Devon  
TQ14 8HW

Are you selling a property too? Call us to get a set of property details like these...

selling

letting

land &  
new homes

signature  
homes

**complete.**