





Hiltons Estates brings to the market this brilliant opportunity to purchase this fifth floor apartment with lift ideally located in Hounslow, TW3. The property comprises an entrance hallway leading to spacious living/dining room, family bathroom, double bedroom, and fully fitted kitchen. Within easy reach to Hounslow Underground stations Piccadilly Line, South Western Railway, Hounslow High Street, Recommended Schools and Places of Worship. Good transport links to Heathrow, Central London, M4, M25. A brilliant opportunity for First Time Buyers and Investors. Long Lease remaining, Service charge £3,200 per annum. Call NOW for further details, viewings available immediately.

Spacious 1 Bed fifth floor apartment in TW3

Long Lease

Easy reach to Hounslow Underground stations
Piccadilly Line

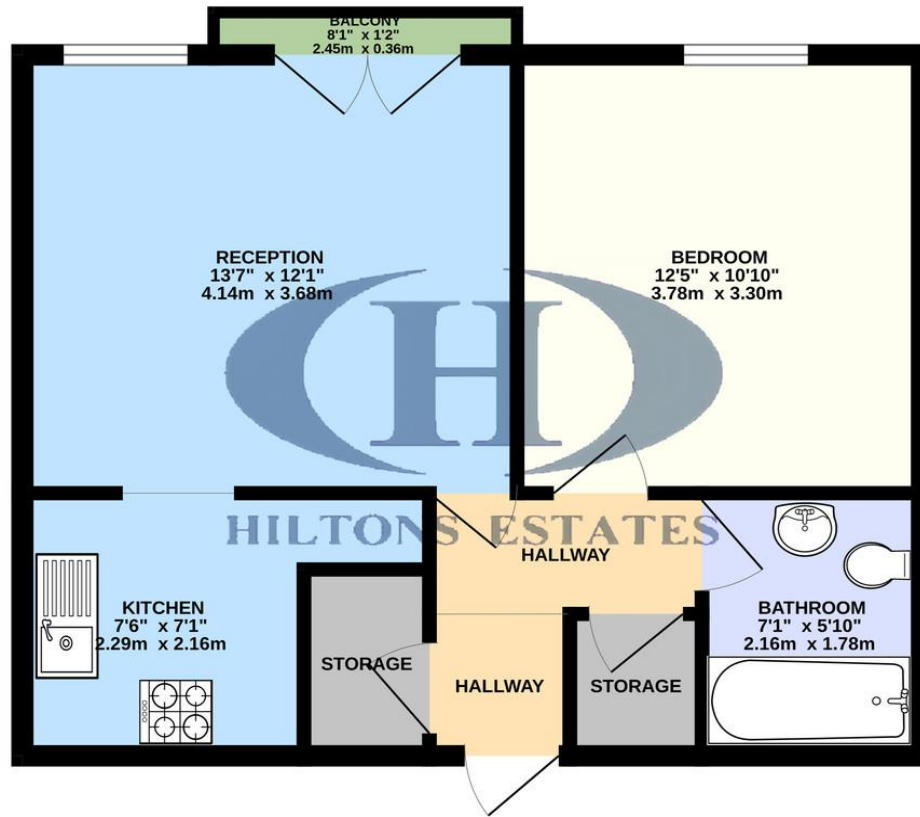
Brilliant opportunity for First Time Buyers and
Investors

Call NOW for further details, Not to missed, viewings
available





GROUND FLOOR
461 sq.ft. (42.9 sq.m.) approx.



TOTAL FLOOR AREA : 461 sq.ft. (42.9 sq.m.) approx.

Whilst every attempt has been made to ensure the accuracy of the floorplan contained here, measurements of doors, windows, rooms and any other items are approximate and no responsibility is taken for any error, omission or mis-statement. This plan is for illustrative purposes only and should be used as such by any prospective purchaser. The services, systems and appliances shown have not been tested and no guarantee as to their operability or efficiency can be given.
Made with Metropix ©2024

Hiltons Estates, 137 Western Road
Southall, UB2 5HN

www.hiltons-estates.com
email: harvin@hiltons-estates.com
0208 867 9555 / 07961 527301

Agents Note: Whilst every care has been taken to prepare these sales particulars, they are for guidance purposes only. All measurements are approximate and for general guidance purposes only and whilst every care has been taken to ensure their accuracy, they should not be relied upon and potential buyers are advised to recheck the measurements.