

# 11 Centre Avenue

Epping, Epping

Council Tax band: D

Tenure: Freehold

- Four bedroom family home
- Open plan kitchen / family room
- Spacious driveway
- Landscaped garden
- Walking distance to Epping station and high street
- Ivy Chimneys school catchment



## Hallway

## Living Room

13' 5" x 11' 3" (4.10m x 3.42m)

## Kitchen / Diner

21' 1" x 20' 10" (6.42m x 6.34m)

## Utility / WC

8' 10" x 5' 8" (2.70m x 1.72m)

## Study

11' 4" x 7' 10" (3.45m x 2.40m)

## Bedroom 1

13' 5" x 12' 11" (4.09m x 3.94m)

## Bedroom 2

11' 3" x 7' 8" (3.43m x 2.33m)

## Ensuite Shower Room

7' 8" x 5' 8" (2.33m x 1.72m)

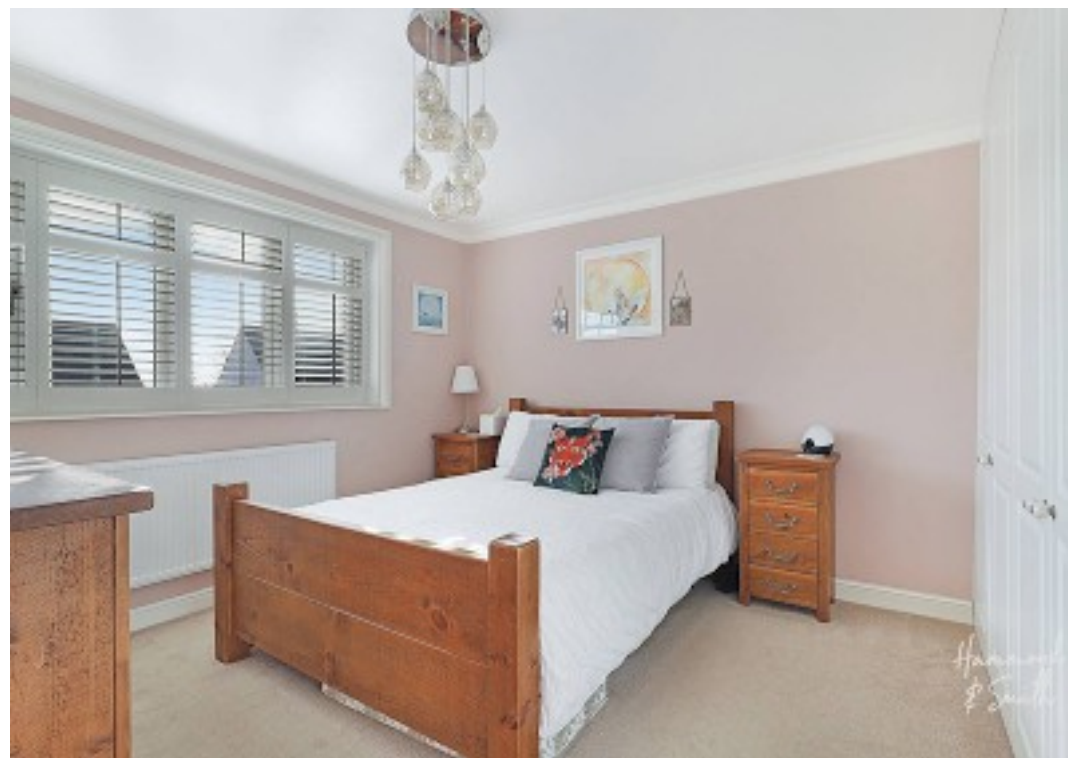
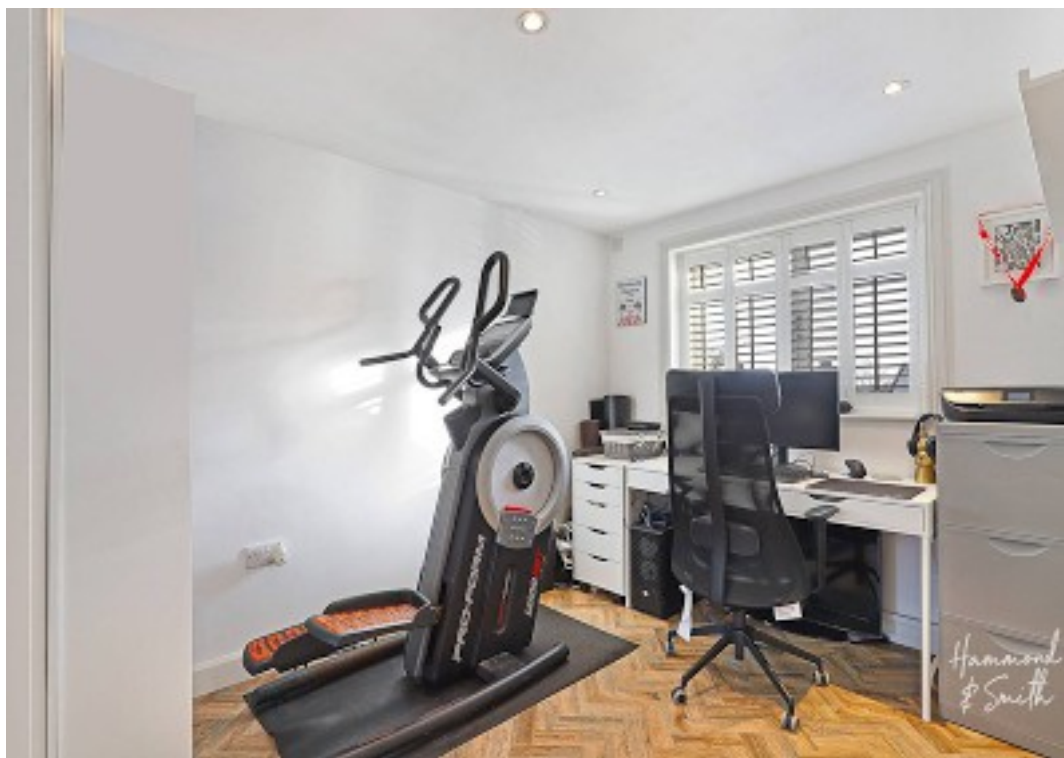
## Bedroom 3

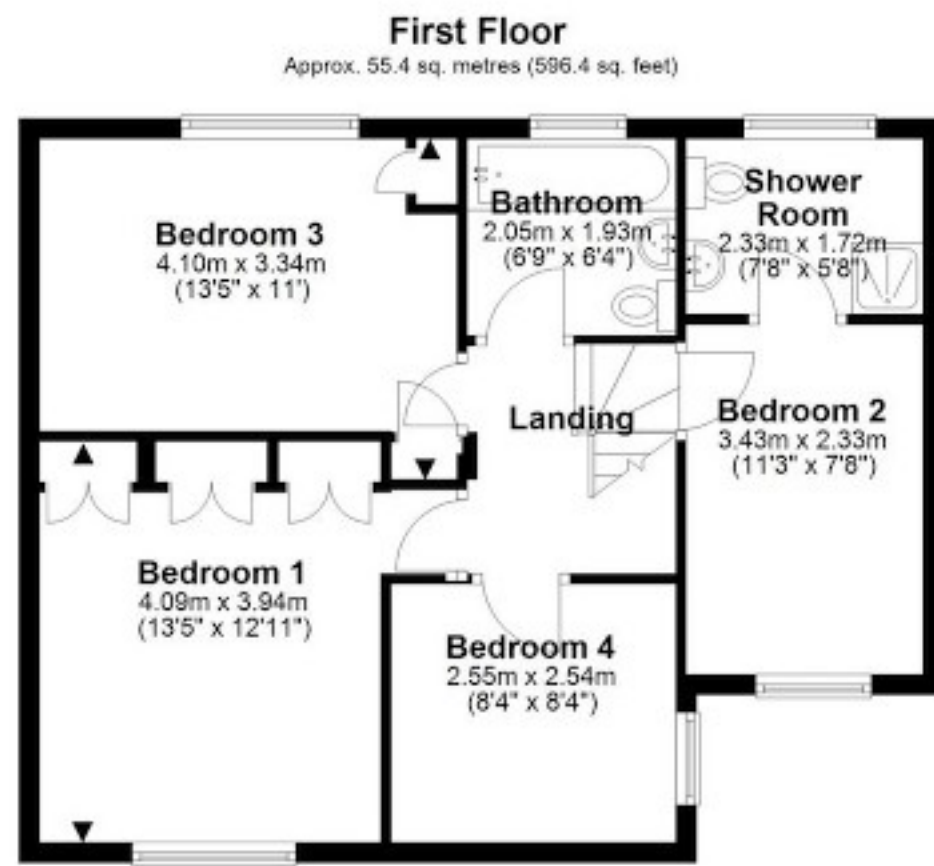
13' 5" x 10' 11" (4.10m x 3.34m)

## Family Bathroom

6' 9" x 6' 4" (2.05m x 1.93m)







Total area: approx. 129.5 sq. metres (1393.5 sq. feet)