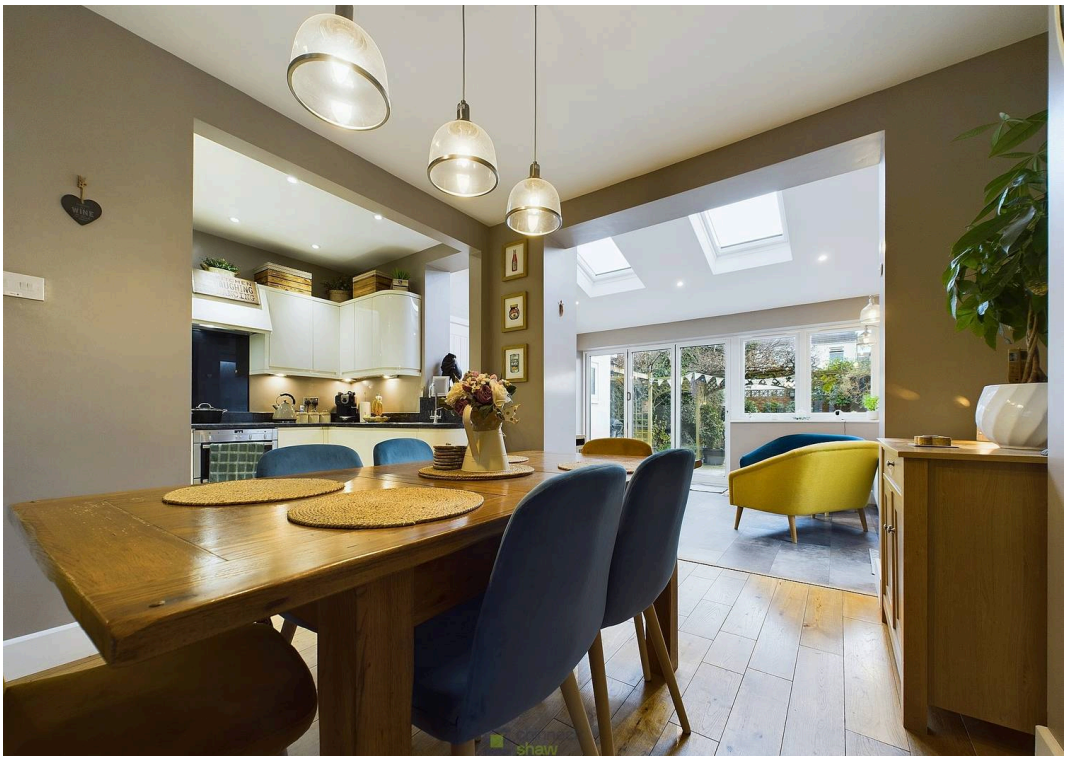




54 Torrington Road, Portsmouth
Portsmouth

£370,000

 chinneckshaw



54 Torrington Road

Portsmouth, Portsmouth

This beautiful family home is in turnkey condition, decorated in modern tones throughout. The light-filled entrance hallway, with understairs storage, leads to the spacious living area. Double doors open to the front living room, featuring heritage colors and a stunning fireplace, ideal for cozy family evenings. The open-plan kitchen and dining space is a highlight, with modern kitchen units, integrated appliances, and granite worktops. The extended living area, overlooking the garden, is perfect for entertaining and family time. There's also additional storage and a downstairs toilet. Bi-fold doors lead to a patio, a large lawned garden with mature planting and a second sitting area. The garage is to the side of the garden.

On the first floor, there's a modern family bathroom with a shower over bath and two double bedrooms. The main bedroom at the front, has built-in wardrobes, bay windows, and a lovely modern ensuite. The top floor boasts a large, light-filled bedroom with stunning views across the city.

Material Information: • Tenure: Freehold • Electricity: Mains Supply • Heating: Gas supply • Water Supply: Mains supply • Sewage: Mains Supply • Broadband: standard, Superfast and Ultrafast Fibre are all available in this area • Parking: Garage and on Road Parking • Council Tax: C • Mobile: Ofcom official website checker states that EE, Vodafone, O2 and Three have all availability in the area • Flood Risk: Low risk

Council Tax band: C





Ground Floor

Approximate total area⁽¹⁾

1193.07 ft²

110.84 m²

Reduced headroom

70.81 ft²

6.58 m²



Floor 1



Floor 2

(1) Excluding balconies and terraces

Reduced headroom

Below 5 ft/1.5 m

While every attempt has been made to ensure accuracy, all measurements are approximate, not to scale. This floor plan is for illustrative purposes only.

Calculations are based on RICS IPMS 3C standard.

GIRAFFE360



Chinneck Shaw

Bridge House, Milton Road, Portsmouth – PO3 6AN

023 9282 6731

hello@chinneckshaw.co.uk

www.chinneckshaw.co.uk/

Chinneck Shaw, Bridge House, Milton Road, PO3 6AN Consumer Protection from Unfair Trading Regulations 2008: These details are for guidance only and complete accuracy cannot be guaranteed. If there is any point which is of particular importance, verification should be obtained. The do not constitute a contract or part of a contract. All measurements are approximate. No guarantee can be given with regard to planning permissions or fitness for purpose. No apparatus, equipment, fixture or fitting has been tested. Items shown in the photographs are NOT necessarily included. Interested Parties are advised to check availability and make an appointment to view before travelling to see a property.