



# The Langley

2 bedroom semi-detached and terraced home



Computer generated image of The Langley

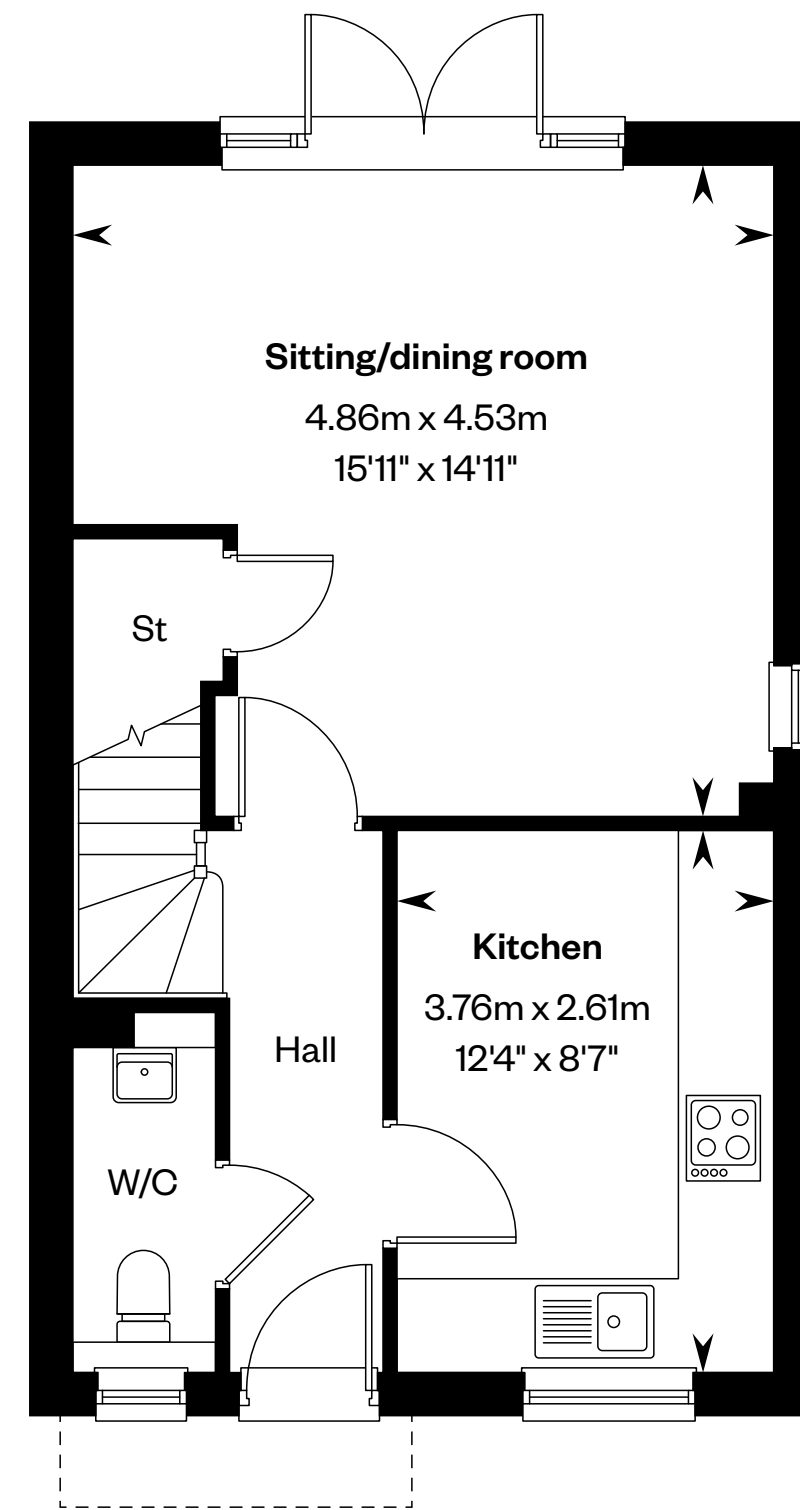
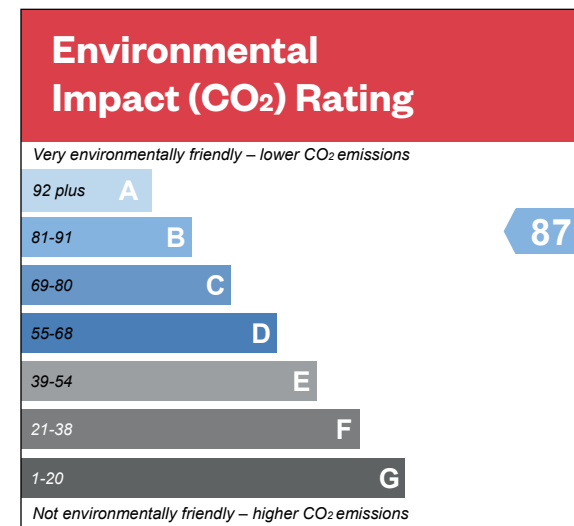
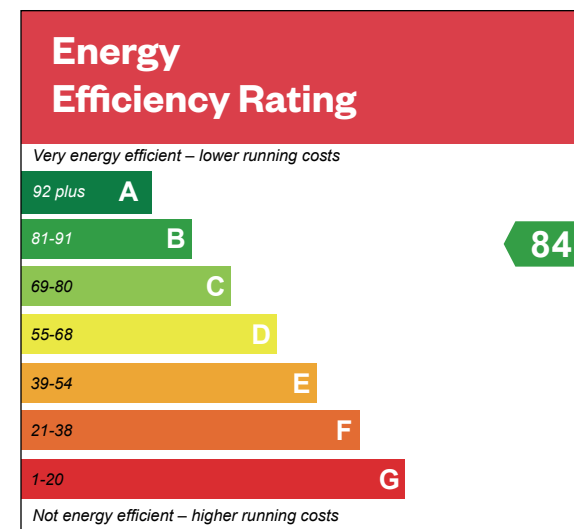


# The Langley

## 2 bedroom bedroom semi-detached and terraced home

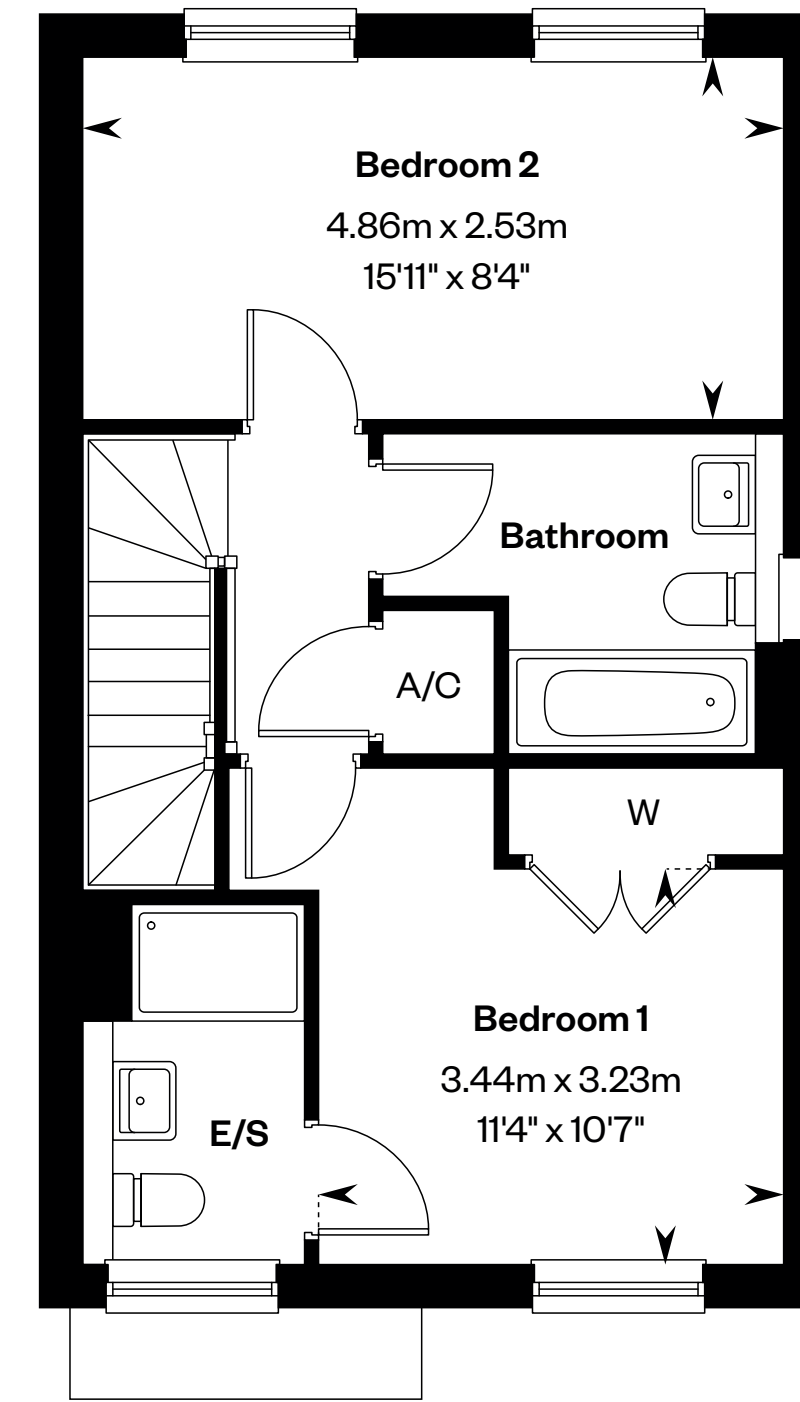
Plots 402, 408, 432, 440, 450, 466, 476, 483, 509 & 513 – as shown

Plots 401, 407, 431, 439, 449, 464, 465, 475, 482, 508 & 512 – handed



Ground floor

\* Window to plots 482 & 483 only.



First floor

\*\* Window to end terraced and semi-detached plots.

\*Window to plots 482 & 483 only. \*\*Window to plots 407, 408, 431 & 432 only. Please ask your Sales Consultant for further details. A/C: Airing cupboard. E/S: En-Suite. St: Store cupboard. W: Wardrobe.

IMPORTANT NOTICE TO CUSTOMERS: The Consumer Protection from Unfair Trading Regulations 2008. Cala Homes (Cotswolds) Limited operates a policy of continual product development and the specifications outlined in this brochure are indicative only. The computer generated images and photographs do not necessarily represent the actual finishings/elevation or treatments, landscaping, furnishings and fittings at this development. Information contained is accurate at date of publication on 03.12.24. See the main brochure for the full Consumer Protection statement. This is a Predicted Energy Assessment for properties that are incomplete. Once the property is completed, this rating will be updated and an official Energy Performance Certificate will be created for the property.