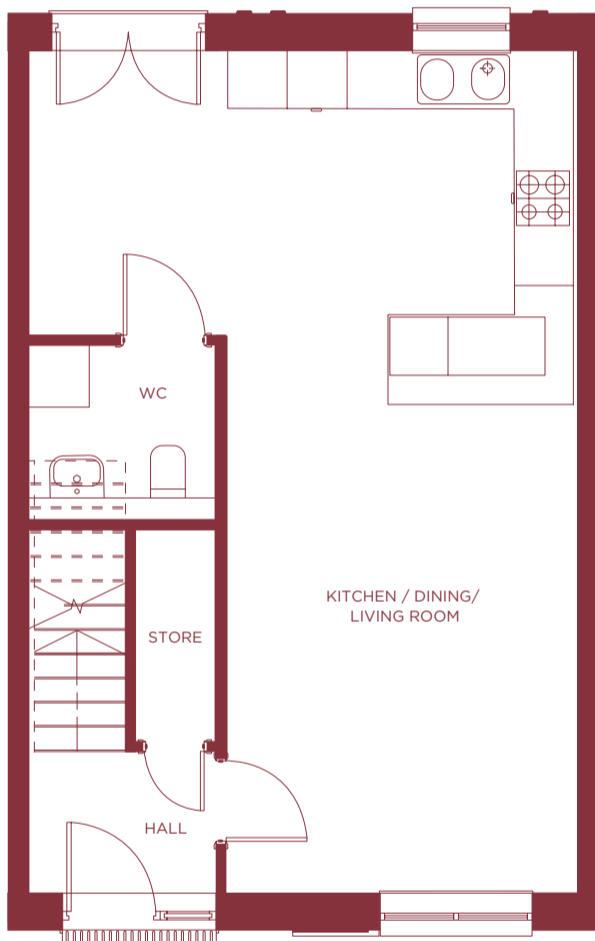


The Orin

3 bedroom end terrace (RH) | 126.8m² / 1,364ft²

Plot numbers: 3 & 6

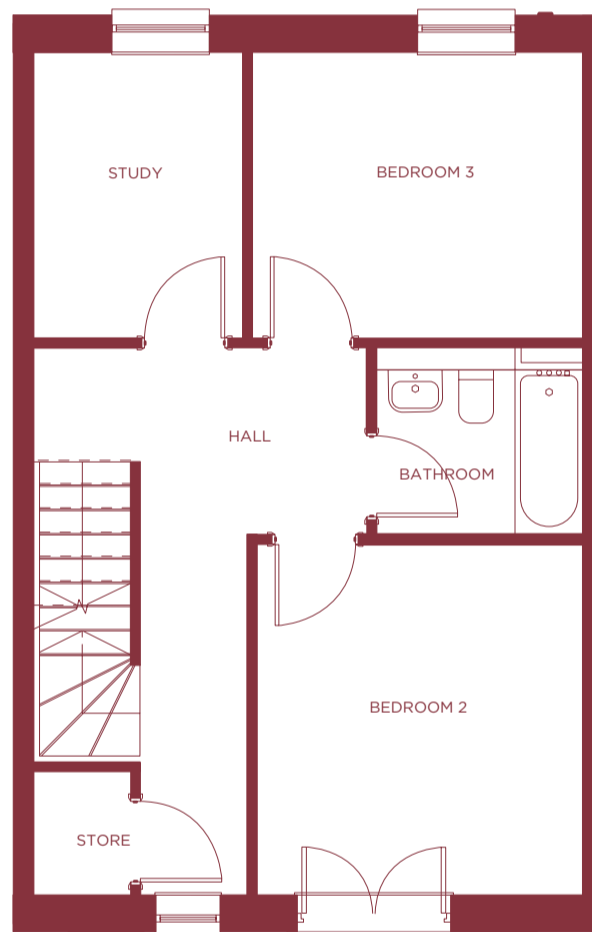


GROUND FLOOR

Kitchen / Dining / Living Room
8.69m x 5.60m 28' 6" x 18' 4"

WC
1.94m x 1.80m 6' 4" x 5' 10"

Store
2.19m x 0.84m 7' 2" x 2' 9"



FIRST FLOOR

Bedroom 1
3.62m x 3.30m 11' 10" x 10' 10"

Bedroom 2
3.35m x 2.95m 10' 11" x 9' 8"

Study
2.95m x 2.16m 9' 8" x 7' 1"

Bathroom
2.13m x 1.93m 6' 11" x 6' 4"

Store
1.27m x 1.00m 4' 2" x 3' 3"



SECOND FLOOR

Bedroom 3
4.50m x 3.69m 14' 9" x 12' 1"

Ensuite
2.83m x 1.64m 9' 3" x 5' 4"