



23 Everton Street, Darwen

£89,950 Leasehold

Council Tax band: A

Tenure: Leasehold



EXCELLENT INVESTMENT OPPOTUNITY IN DARWEN WITH NO ONWARD CHAIN! Presented to the market stands this deceptively spacious mid terrace property. Brimming with potential, this perfectly suits investors or first time buyers to establish their own stamp and personal touches throughout.

This property comprises an entrance vestibule and hallway with wonderful high ceilings, leading to the light filled, neutrally decorated lounge. The generous second reception room provides an inviting space to relax. Completing the ground floor is the fitted kitchen, with ample space for appliances and access to the rear yard. On the first floor, leading from the landing is the spacious master bedroom with an additional double bedroom, finally the bathroom comes with a three piece in white and yard space at the rear. The property is warmed through gas central heating and double glazing throughout.

Located in the ever popular area of Darwen with local amenities in touching distance, we are expecting high levels of interest on this property so early viewing is advised!



Vestibule

Composite front door, tile flooring

Hallway

Carpet flooring, stairs to first floor

Lounge

Carpet flooring, gas fire with marble surround uPVC double glazed window, panel radiator, TV point

Dining Room

Carpet flooring, gas fire, panel radiator, phone point, under stairs storage uPVC double glazed window

Kitchen

Range of fitted wall and base units with contrasting worksurfaces, vinyl flooring, stainless steel sink and drainer, plumbed for washing machine, space for electric cooker, space for fridge freezer, tiled splash backs wooden door to rear.

Landing

Carpet Flooring

Bedroom

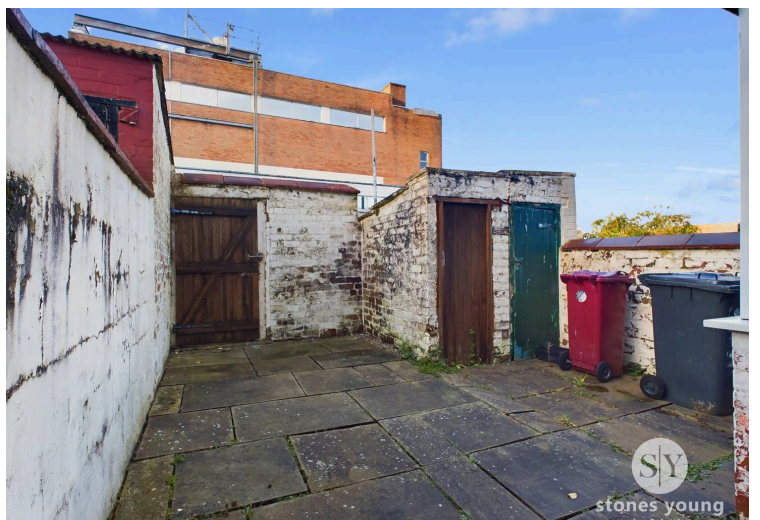
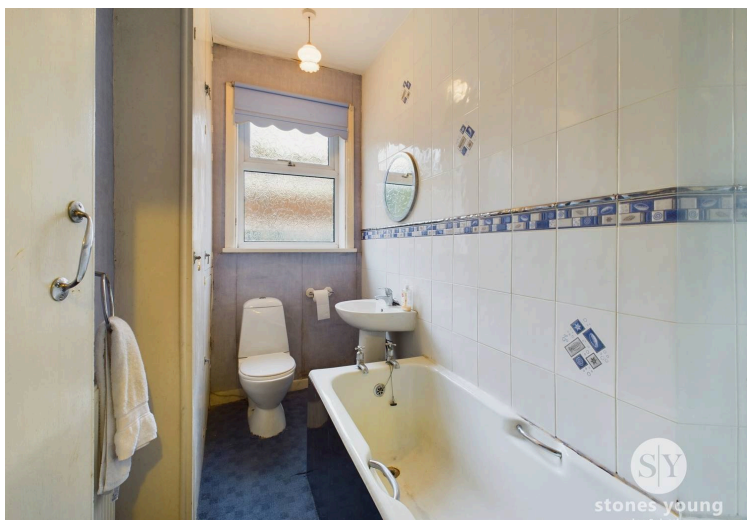
Double bedroom, carpet flooring uPVC double glazed window panel radiator fitted wardrobe

Bedroom 2

Double Bedroom, carpet flooring, uPVC double glazed window panel radiator

Bathroom

3 peice in white, electric shower over bath ,carpet flooring, uPVC frosted double glazed window, cupboard housing boiler





Approximate total area⁽¹⁾
820.31 ft²

(1) Excluding balconies and terraces

While every attempt has been made to ensure accuracy, all measurements are approximate, not to scale. This floor plan is for illustrative purposes only.

Calculations are based on RICS IPMS 3C standard.

GIRAFFE360



Floor 0



Floor 1