



17 Church View | Aston | Sheffield | S26 2FE

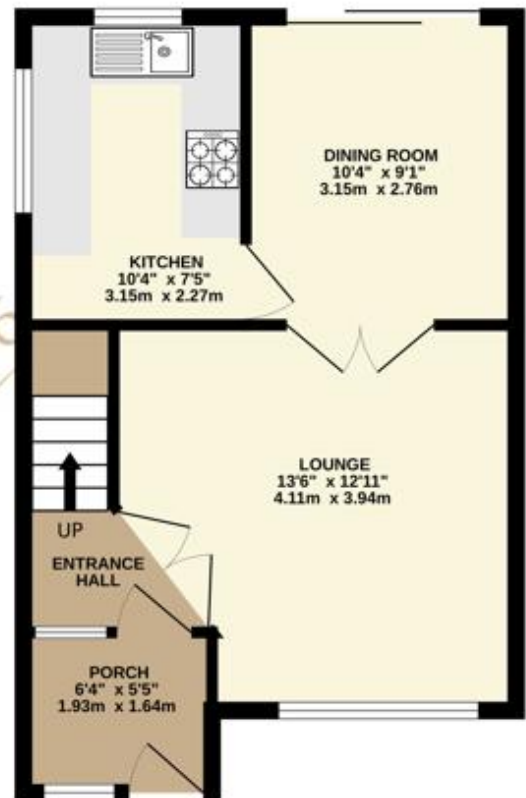
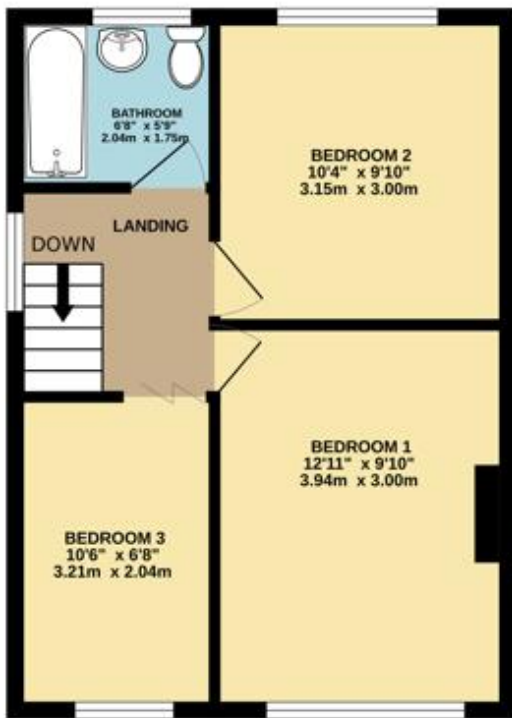
£230,000

Bell & Co Estates are delighted to present this modern, three-bedroom semi-detached property, located in the heart of Aston. In brief this perfect family home comprises of a welcoming entrance porch which flows into the hallway with double doors opening into a cosy front facing lounge with feature wall with electric fire, double doors flow seamlessly into the dining room, the perfect place for entertaining. The modern fitted kitchen comes complete with stunning units and integrated appliances with ample space for preparing those hearty meals. To the upstairs are three good size bedrooms and a modern family bathroom with shower over bath, WC and sink. To the front of the property is a lovely, paved driveway providing parking for multiple vehicles leading to the detached garage and enclosed garden which is mainly laid to lawn with patio area. Situated close to local amenities, schools, and excellent transport links, this property is in a prime location for convenience and accessibility. Viewing is highly recommended to appreciate the size and potential this home has to offer. Contact us today to arrange a viewing!



BASEMENT
382 sq.ft. (35.4 sq.m.) approx.

GROUND FLOOR
402 sq.ft. (37.3 sq.m.) approx.



Contact Details

79 Wales Road
Kiveton Park
Sheffield
South Yorkshire
S26 6RA

www.bellcoestates.com
info@bellcoestates.com
03333 580590

Agents Note: Whilst every care has been taken to prepare these sales particulars, they are for guidance purposes only. All measurements are approximate and for general guidance purposes only and whilst every care has been taken to ensure their accuracy, they should not be relied upon and potential buyers are advised to recheck the measurements