

The Oatvale

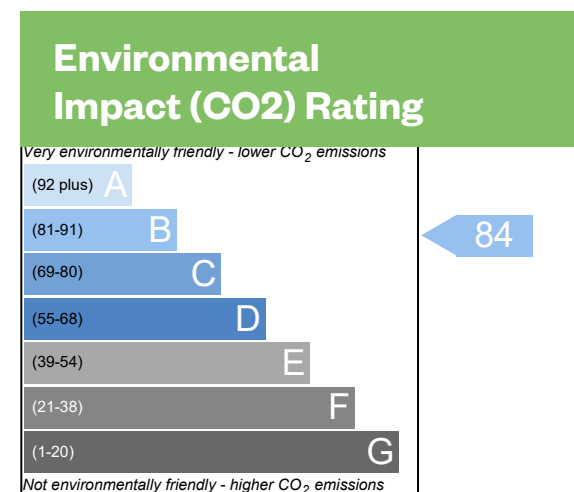
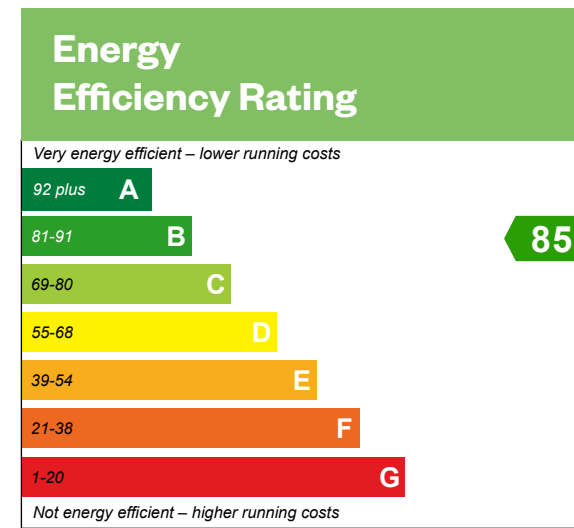
4 bedroom detached home



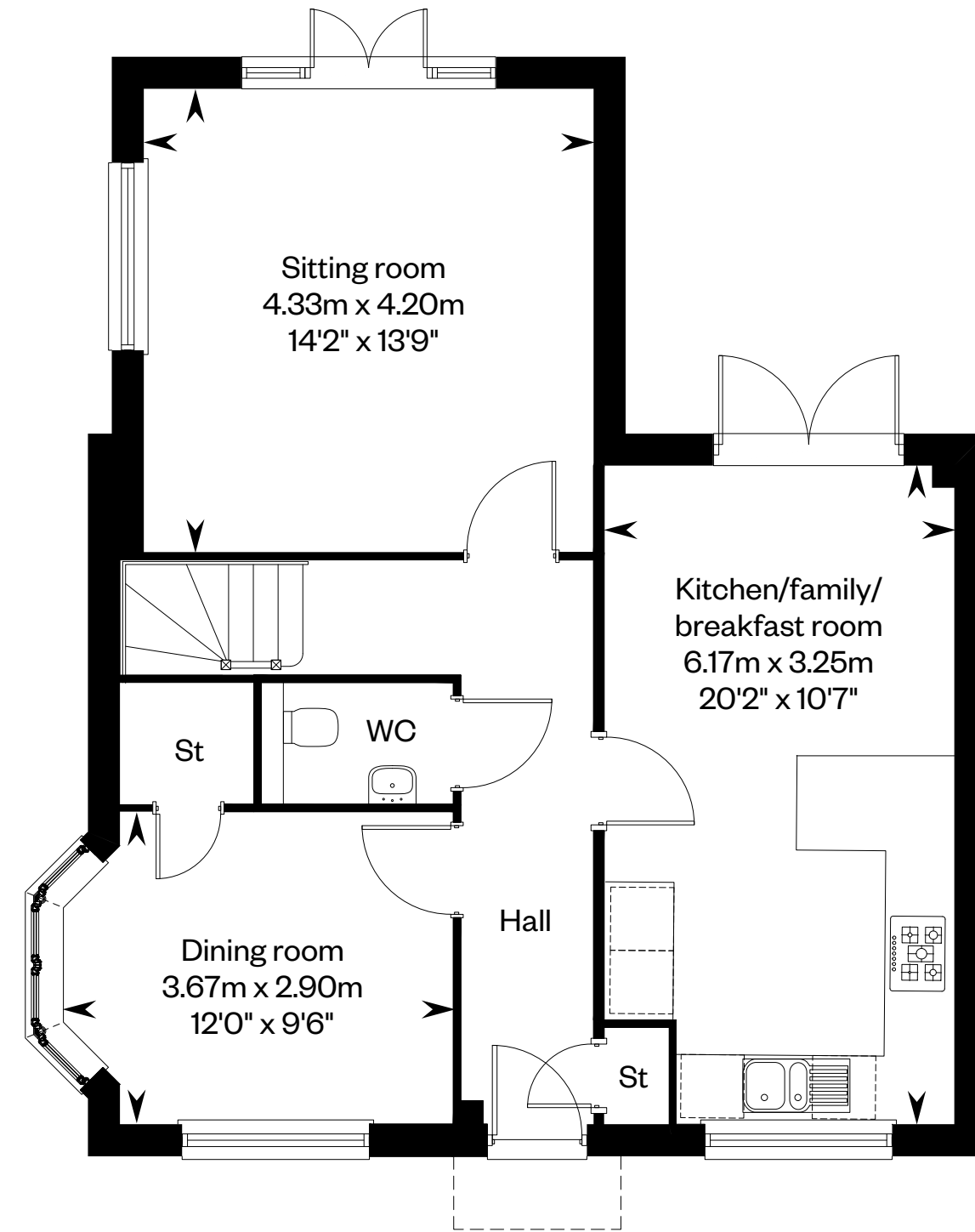
The Oatvale

Plots 188, 192 & 229, 284, 338 & 396 – as shown

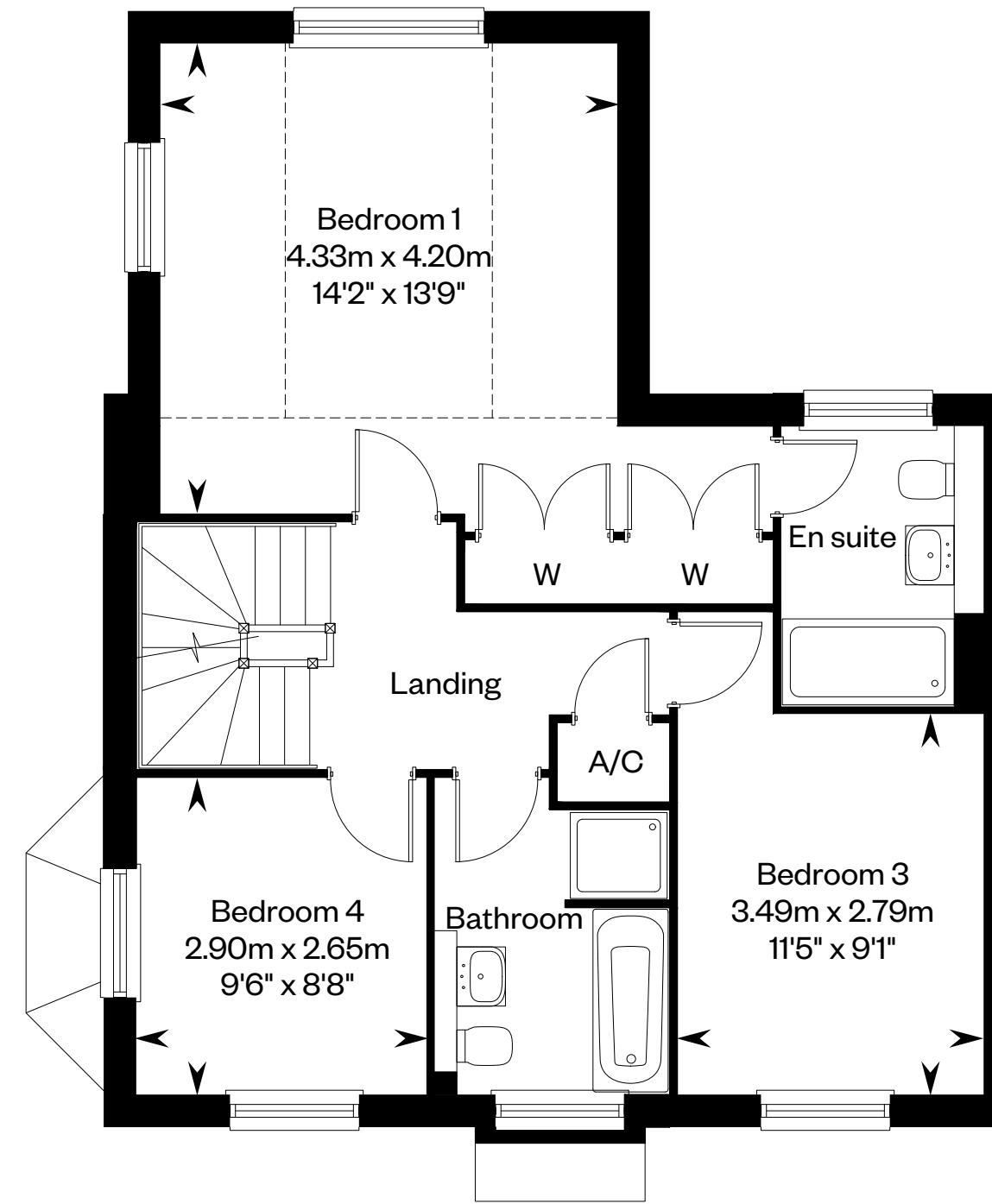
Plots 242 & 266, 278, 285, 311, 312, 319, 373, 384 & 395 – handed



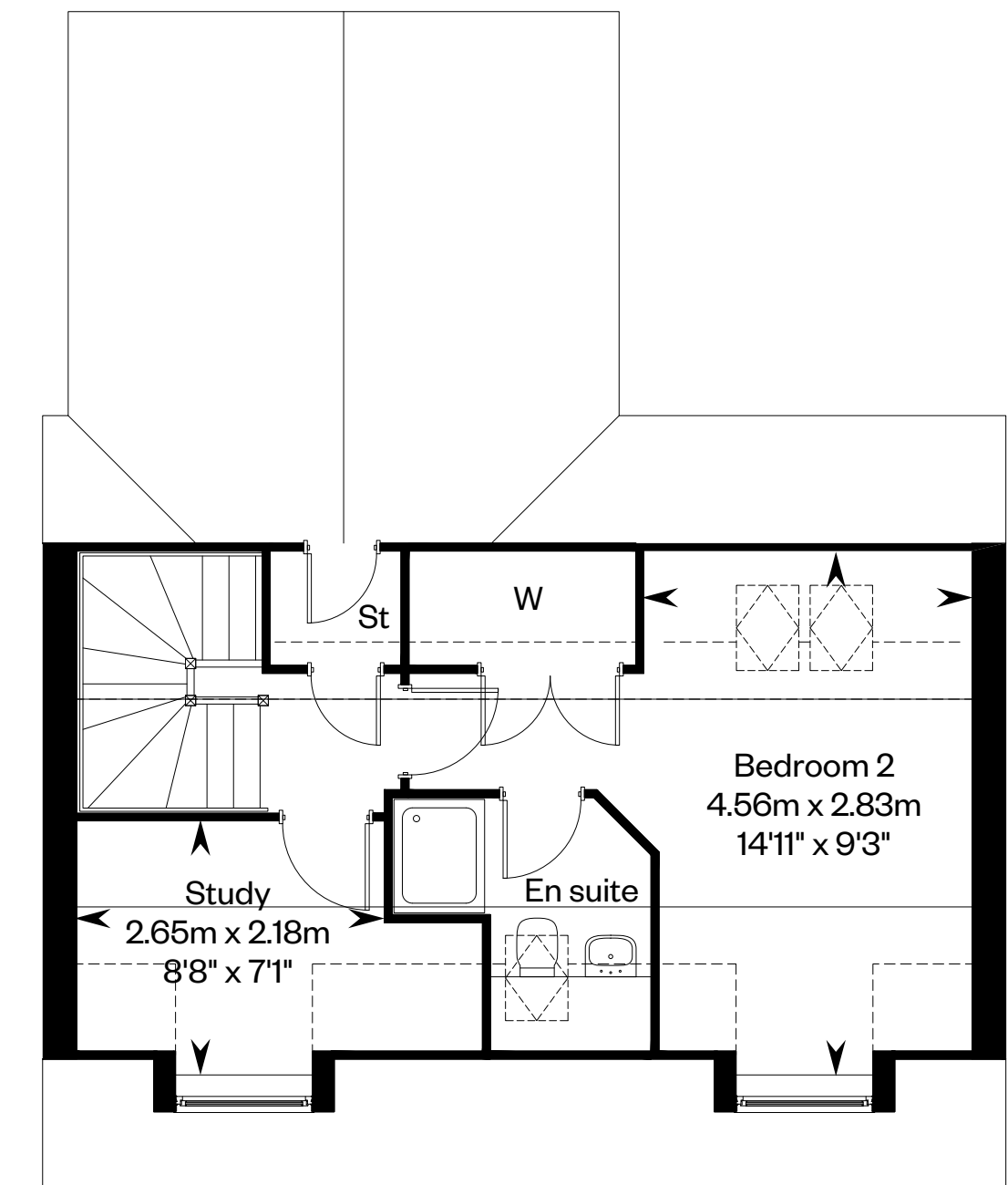
This is a Predicted Energy Assessment for properties that are incomplete. Once the property is completed, this rating will be updated and an official Energy Performance Certificate will be created for the property.



Ground floor



First floor



Second floor

Scan to view our virtual tour



Plots 266, 278, 311, 384 & 395 have a stone exterior. All other plots have a different material finish. Please ask your Sales Consultant for details. Dotted lines denote reduced head height or structure above and approximate position of 1800mm ceiling height. Solid thin line denotes extent of full height ceiling. Please ask your Sales Consultant for further details. St: Store cupboard. W: Wardrobe. A/C: Airing cupboard. ☐: Roof light

IMPORTANT NOTICE TO CUSTOMERS: The Consumer Protection from Unfair Trading Regulations 2008. Cala Homes (Midlands) Limited operates a policy of continual product development and the specifications outlined in this brochure are indicative only. The computer generated images and photographs do not necessarily represent the actual finishings/elevation or treatments, landscaping, furnishings and fittings at this development. Information contained is accurate at date of publication on 23.03.22. See the main brochure for the full Consumer Protection statement.