



Higher Woodford Lane, Plymouth, PL7 4PD

£625,000 FREEHOLD EPC:TBC



Higher Woodford Lane

Plymouth, PL7 4PD

Wonderful farmhouse in Plympton with 4 double bedrooms and countryside views. Modern kitchen, private landscaped gardens with attractive terraces, double garage, and close to amenities. Perfect for remote working. Blend of countryside living with urban convenience. Council Tax band: E

Tenure: Freehold

- Located on a Private Road in the Stannary Town of Plympton
- Four Double Bedroom Attached Farmhouse (Circa 1850)
- Beautifully Private, Landscaped Gardens with Attractive Terraces
- Far Reaching Countryside Views
- Modern Fitted Kitchen with Integrated Appliances
- Extended Dining/Utility Area
- Close to Good Schools & Plenty Amenities
- Double Garage and Drive providing ample off road parking
- Downstairs Wet Room with Underfloor Heating
- A Cosy Living Room with Log Burner



Higher Woodford Lane

Plymouth, PL7 4PD

A stunning 3-bedroom farmhouse boasting far-reaching countryside views - built circa 1840.

Nestled on a private road in the charming Stannary Town of Plympton, this property offers the perfect blend of tranquillity and convenience and is wonderfully located to explore the Granite Majesty of Dartmoor, the numerous beaches and coastal towns of South Devon and The Rame Peninsular but within easy striking distance of Plymouth and its range of services and shops. Closer to home, Boringdon Golf Course, Gaia Spa and the ever popular Plymbridge Woods are within walking distance.

Step into beautifully private, landscaped gardens with attractive terraces, ideal for hosting gatherings or simply enjoying the picturesque surroundings. The modern fitted kitchen with integrated appliances and an extended dining/utility area make for effortless entertaining, while the cosy living room with a log burner provides a warm and inviting atmosphere.

With a downstairs wet room featuring underfloor heating, this farmhouse is both elegant and practical. Plus, with close proximity to good schools and plenty of amenities, this home offers a lifestyle of comfort and ease. Complete with a double garage and a drive providing ample off-road parking.

- Located on a Private Road in the Stannary Town of Plympton
- Four Double Bedroom Attached Farmhouse (Circa 1850)

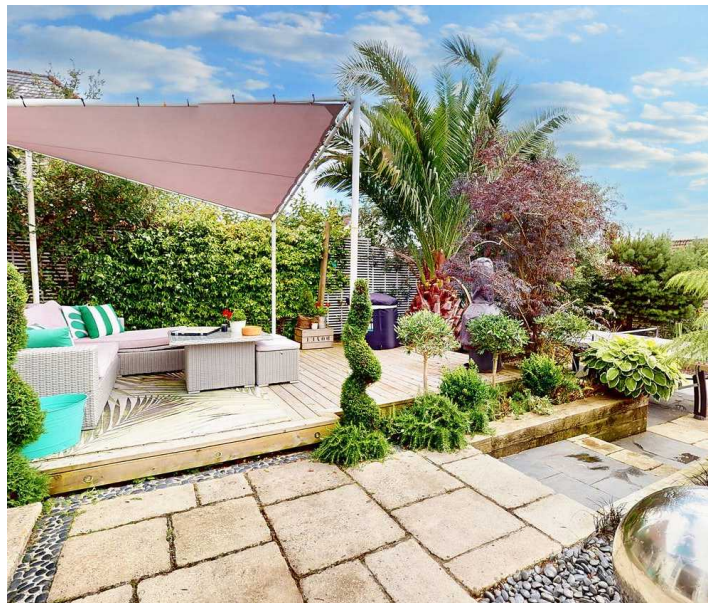
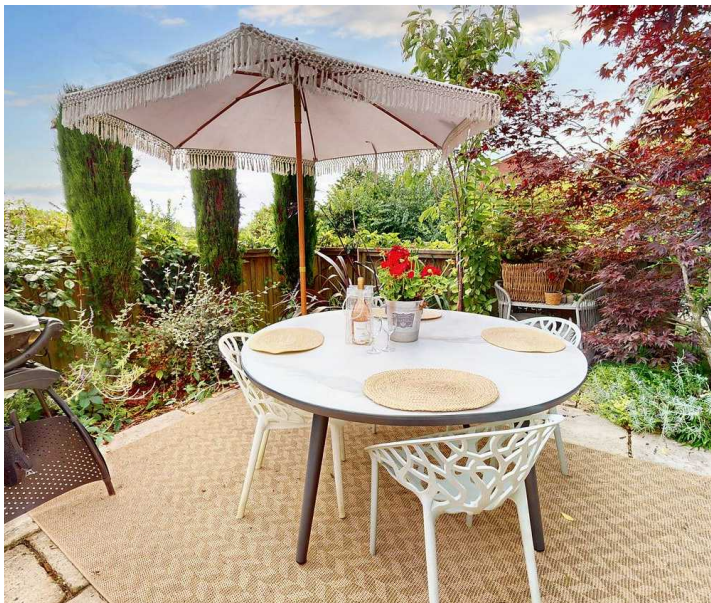




GARDEN

GARAGE

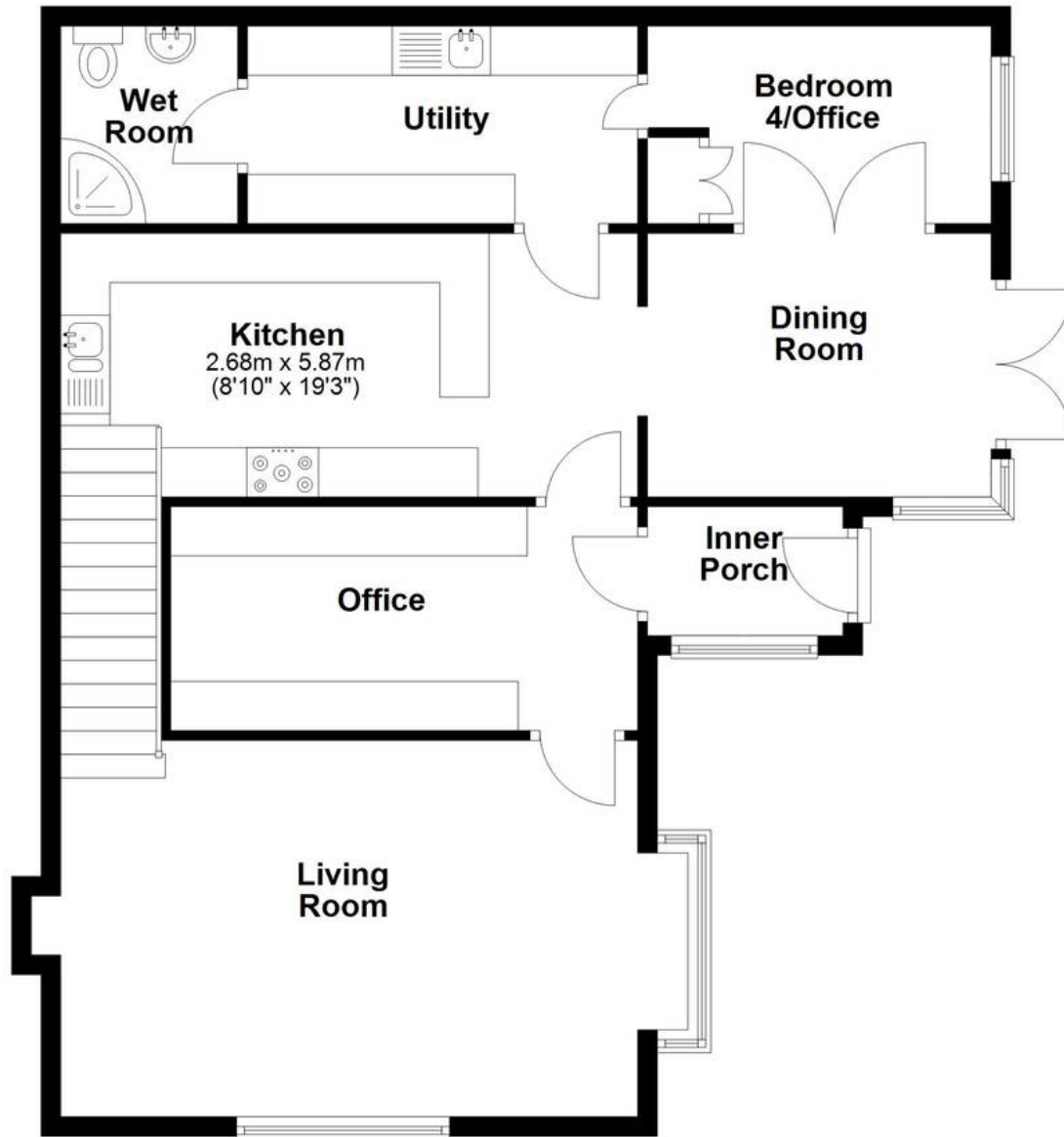
Double Garage





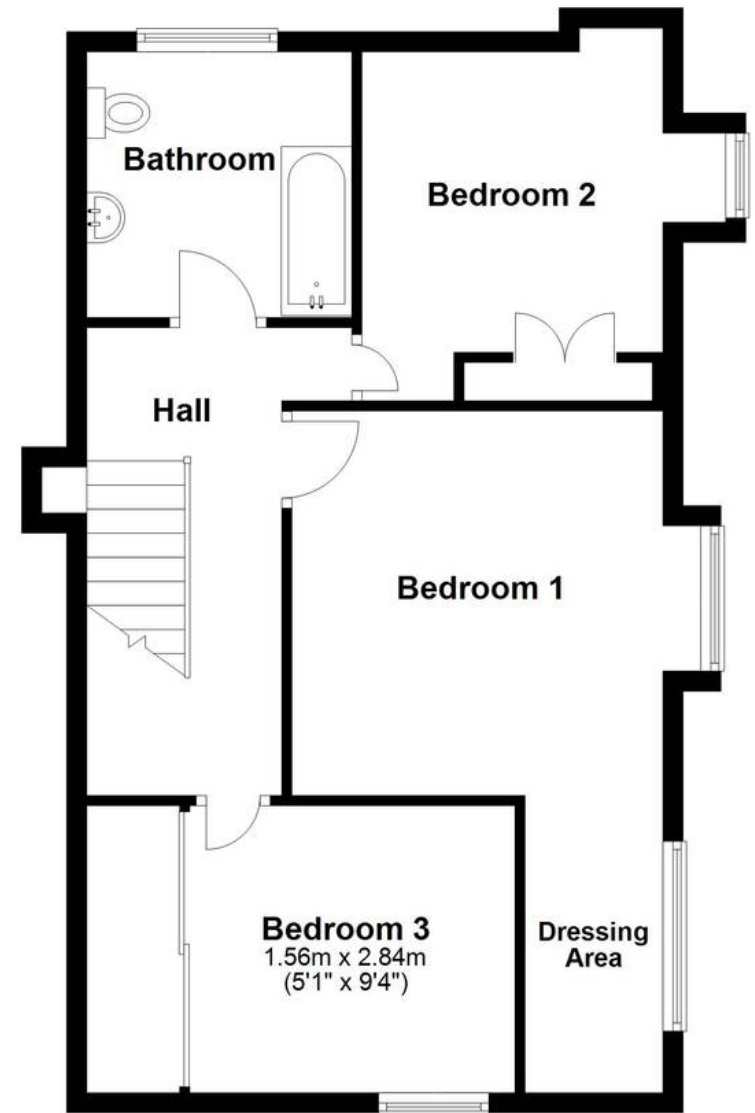
Ground Floor

Approx. 85.7 sq. metres (922.9 sq. feet)



First Floor

Approx. 54.8 sq. metres (589.4 sq. feet)



Total area: approx. 140.5 sq. metres (1512.2 sq. feet)

Higher Woodford Lodge, Plympton



Atwell Martin

Atwell Martin, 65 Southside Street - PL1 2LA

01752 202121

plymouthsales@atwell-martin.co.uk

plymouth.atwellmartin.co.uk/

Atwell Martin Plymouth endeavour to ensure the accuracy of property details produced and displayed. Please note that we have not tested any apparatus, equipment, fixtures, fittings or services and so cannot verify that they are connected, in working order or fit for purpose. It is imperative that the buyer of any property makes such checks, prior to purchase so as to satisfy themselves of the properties suitability for their purchase. .