

235-237 Broadway, Bexleyheath, DA6 7EJ



TO LET

Class E Retail / Leisure

4,014 sq ft / 372.9 sq m

Rent on application

**A new prominent
ground floor unit
suitable for class E
retail use available
from Q1 2026.**



- New development
- Pre let opportunities
- Notable occupiers situated close by
- Developers shell core fit out with capped off services
- Town Centre location
- To be developed in 12-18 months
- Expected to be completed by Q1 2026

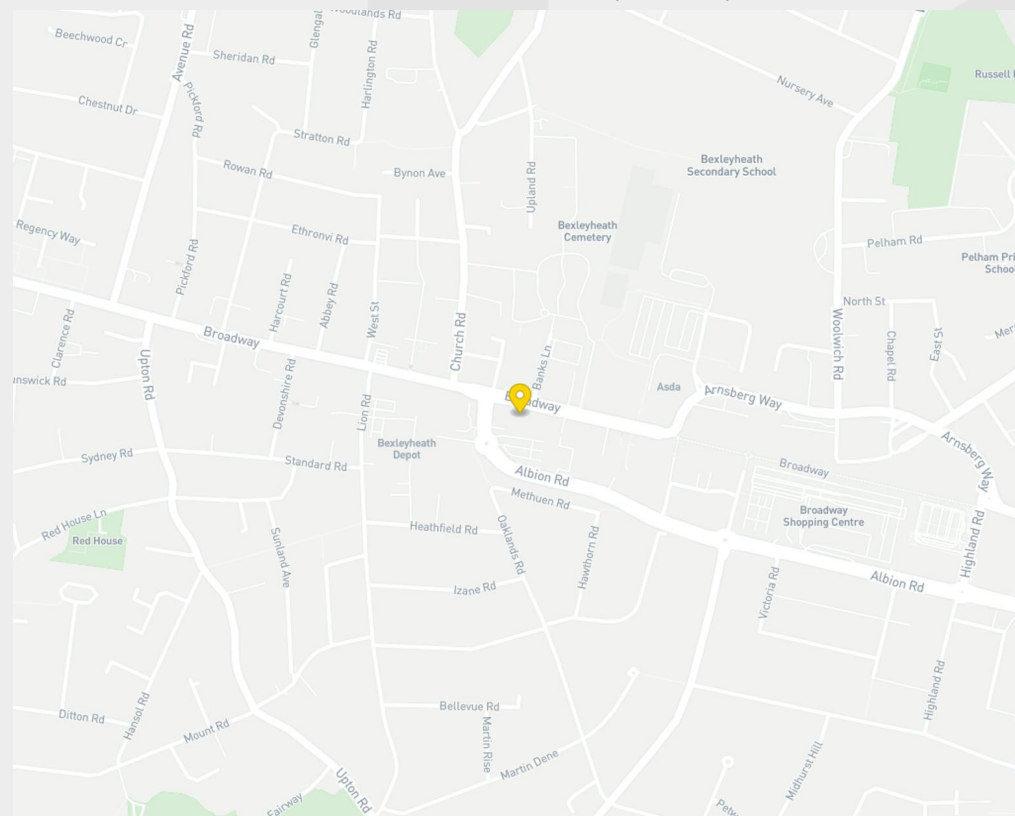


Description

The property occupies the ground floor of a 3 storey corner building which is to be developed into 9 residential units comprising 5 x 2 bed and 4 x 1 bed flat on a prominent location. Internally the space is to be handed over in developer's shell and core specification with capped off services. The development is expected to be complete in Q1 2026.

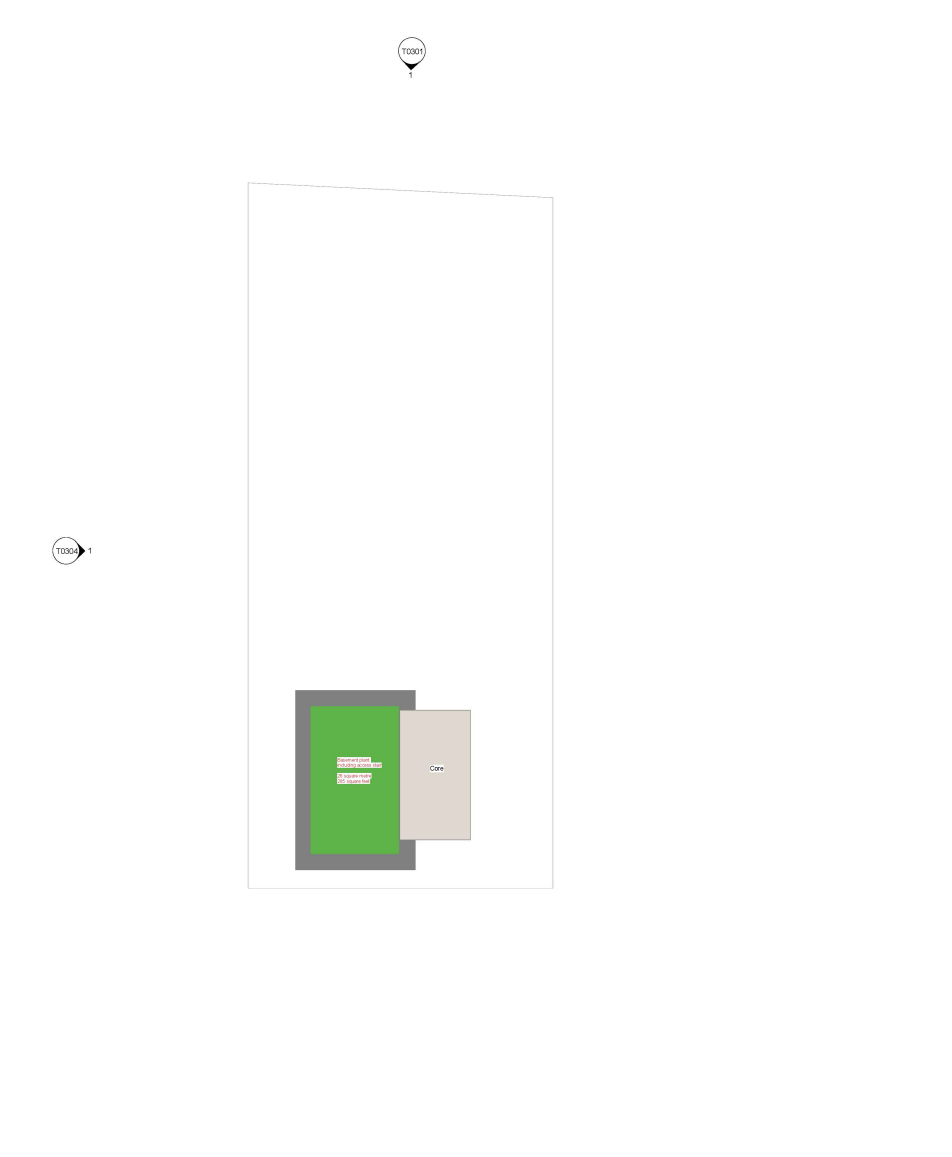
Location

The subject property provides an exciting opportunity to occupy a prominent corner position on the busy Broadway in Bexleyheath. The premises is situated close to Oaklands Car Park, benefiting from 125 spaces for shoppers, and Bowling Centre Car Park, which provides 193 car parking spaces. The area is also served by several bus routes, linking Bexleyheath with Lewisham, Erith, Eltham, North Greenwich, Bromley, Thamesmead, Blackheath, Orpington, Abbey Wood and Woolwich. The property has several Neighbouring occupiers which include Fireaway Pizza, Wimpy, KFC, Pizza Express, Kaspas, Asda, Cakebox and Ladbrokes as well as established independent operators.

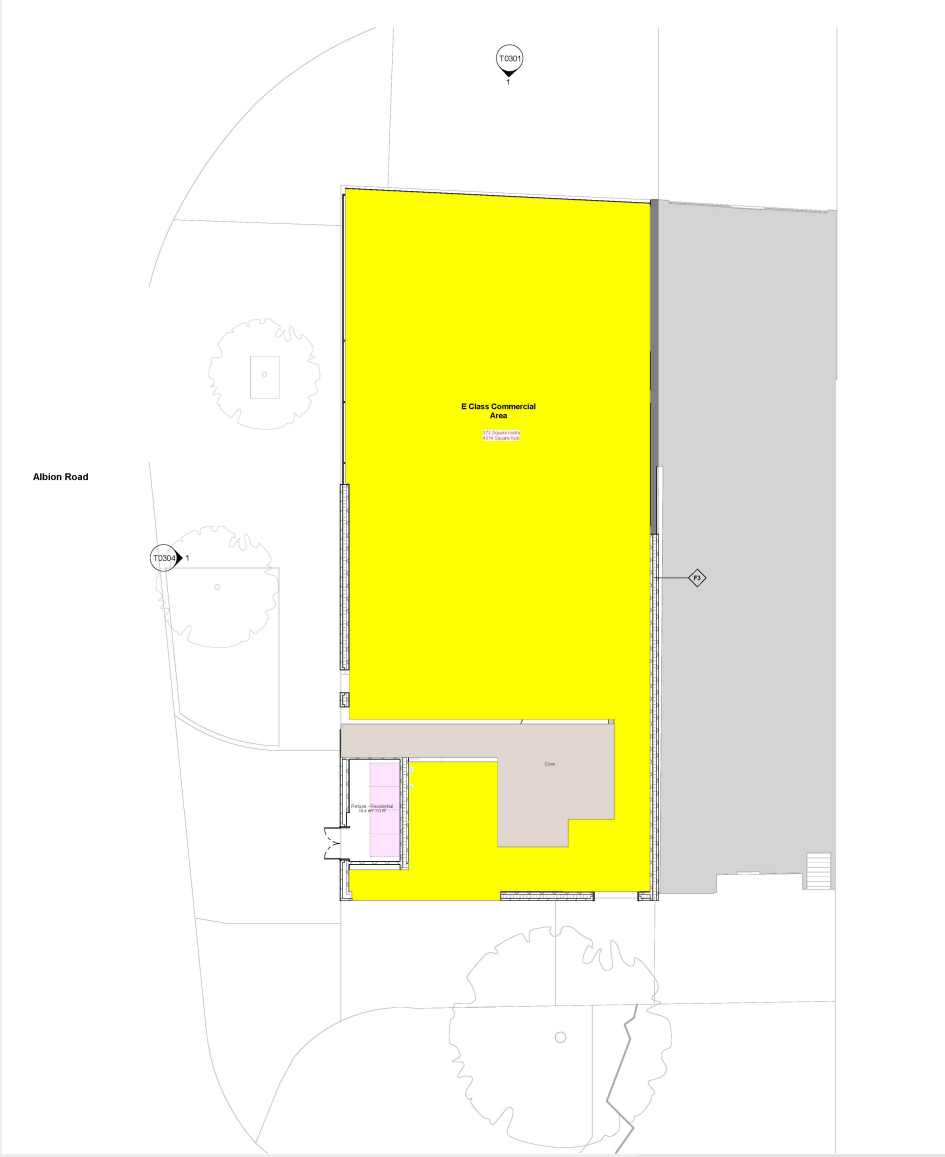


Floor Plans

Basement



Ground floor



Accommodation / Availability

Unit	Sq ft	Sq m	Availability
Ground - Class E Retail Use	4,014	372.91	Available
Total	4,014	372.91	

Tenure

New Lease

EPC

Has been commissioned

VAT

Upon enquiry

Configuration

Shell and Core

Contacts

Nowsher Alam
07967 776 358
nowsher.alam@strettons.co.uk



Strettons and their clients give notice that: 1. They are not authorised to make or give any representations or warranties in relation to the property either here or elsewhere, either on their own behalf or on behalf of their client or otherwise. They assume no responsibility for any statement that may be made in these particulars. These particulars do not form part of any offer or contract and must not be relied upon as statements or representations of fact. 2. Any areas, measurements or distances are approximate. The text, photographs and plans are for guidance only and are not necessarily comprehensive. It should not be assumed that the property has all necessary planning, building regulation or other consents and the Agents have not tested any services, equipment or facilities. Purchasers must satisfy themselves by inspection or otherwise. Generated on 22/11/2024