



## Flat 135, Atlantic House, 1 Ayton Drive

£150,000 Leasehold

- Two Bedrooms
- Allocated Parking
- Open Plan
- Leisure Centre
- En-suite
- Large Balcony
- No Chain
- Well Presented





Well-presented two bedroom apartment situated in Atlantic house in Ocean Views. The property has two double bedrooms, en-suite to master, open plan lo...

Council Tax band: C

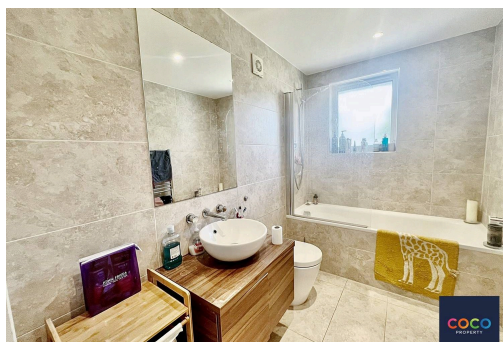
Tenure: Leasehold

EPC Energy Efficiency Rating: D

EPC Environmental Impact Rating: D



- › - Two Bedrooms
- › - Allocated Parking
- › - Open Plan
- › - Leisure Centre
- › - En-suite
- › - Large Balcony
- › - No Chain
- › - Well Presented





**Sitting Room**

13' 1" x 12' 9" (3.98m x 3.88m)

**Kitchen/Diner**

13' 5" x 9' 11" (4.09m x 3.02m)

**Bedroom One**

13' 0" x 10' 3" (3.96m x 3.13m)

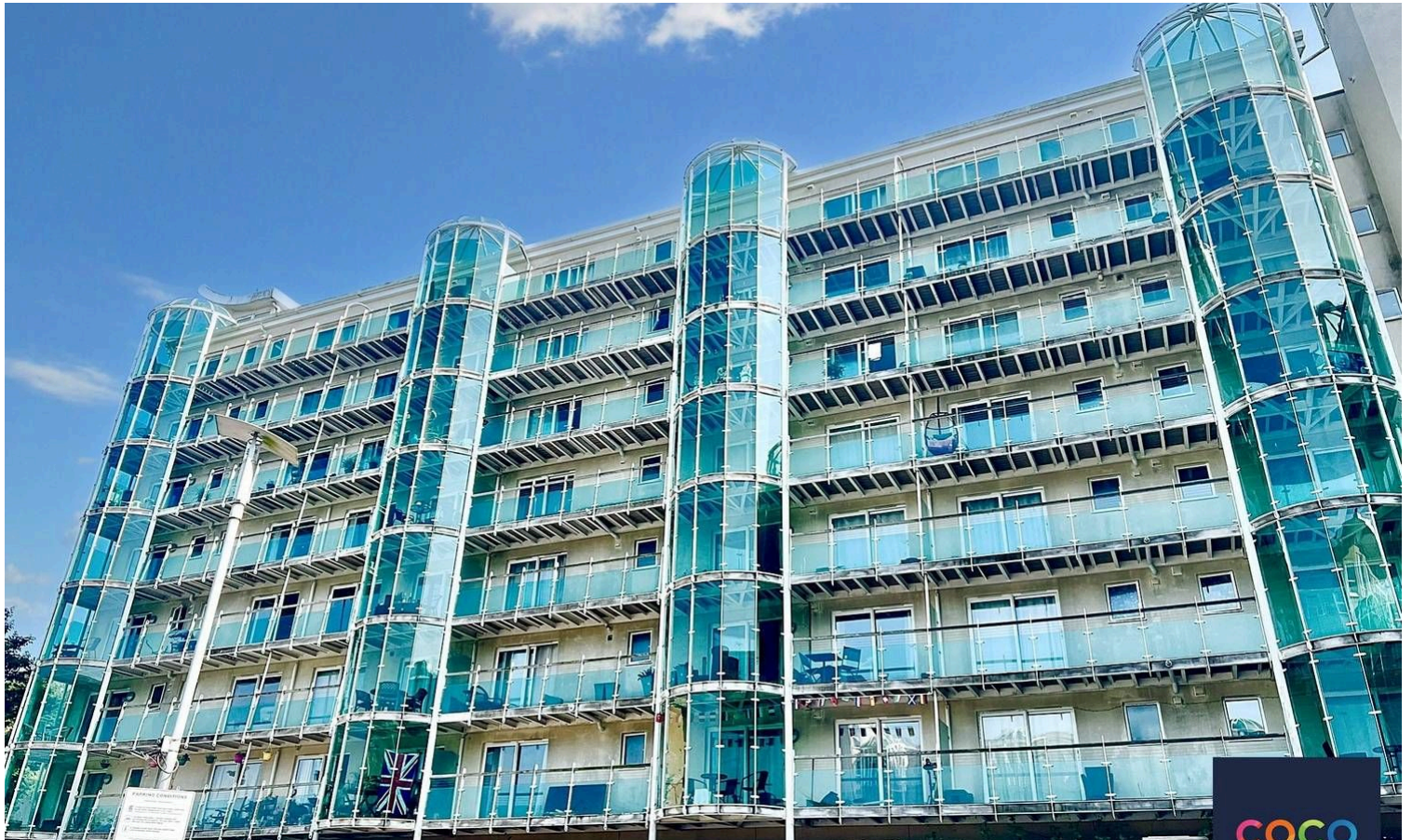
**Bedroom Two**

9' 10" x 8' 10" (2.99m x 2.70m)

**Bathroom**

8' 9" x 5' 5" (2.67m x 1.66m)

**En-suite**







You can include any text here. The text can be modified upon generating your brochure.