



Dunnock Drive, Costessey - NR8 5FF

**STARKINGS
&
WATSON**

HYBRID ESTATE AGENTS



Dunnock Drive

Costessey, Norwich

VENDOR FOUND. A well positioned SEMI-DETACHED house tucked away in the heart of this ever popular development with all local amenities and public transport links in walking distance. Being immaculately presented internally, this welcoming home offers a SPACIOUS SITTING ROOM on the ground floor, with large storage cupboard, uPVC French doors into the rear garden and ample space for a sitting room suite and potential dining table if desired. The kitchen hosts a multitude of INTEGRATED APPLIANCES and sits adjacent to the ground floor W.C. The first floor gives way to THREE BEDROOMS with the larger benefiting from an EN-SUITE SHOWER ROOM, and all having use of the main family BATHROOM. The rear garden is fully enclosed and well maintained with planting borders and artificial lawn to the side and front with TWO ALLOCATED PARKING spaces found to the rear of the property.

Council Tax band: C

Tenure: Freehold

EPC Energy Efficiency Rating: C

EPC Environmental Impact Rating: C



- Semi-Detached Home
- Hall Entrance with Cloakroom
- Kitchen with Integrated Appliances
- 15' Open Plan Sitting/Dining Room
- Three Bedrooms
- En Suite & Family Bathroom
- Private & Enclosed Garden
- Allocated Parking

The development of Queens Hills is located on the fringes of Costessey. Local schooling is located within walking distance, and a regular bus link into Norwich City centre is provided. The nearby Longwater Retail Park offers a fantastic range of shops and supermarket, whilst the A47 leads to Norwich and the A11.

SETTING THE SCENE

The property is nestled back from the street, hidden from the road with access only coming from a footpath to the front. The property itself is fully enclosed with timber picket style fencing giving way to artificial lawn at the side and front of the property while a pitched and tiled awning sits above the front door.



THE GRAND TOUR

As you step inside you are first met with an attractive entrance lobby complete with wood effect flooring laid underfoot and wall mounted radiator, stairs for the first floor can be found ahead whilst immediately to your left a two piece WC hosts a low-level radiator and small frosted glass window to the front. Turning to your right you will find yourself within the kitchen/breakfast room where a range of wall and base mounted storage units are set around rolled edge work surfaces giving way to a multitude of integrated appliances including a dishwasher, washing machine, fridge/freezer plus oven and gas hob with extraction above. Within the kitchen there is floor space suited to a corner breakfast table with uPVC double glazed windows to the front and low level radiator on the wall. Through from here a generously sized sitting room occupies the rear of the property with carpeted flooring laid underfoot, uPVC double glazed window sitting next to French doors taking you directly into the rear garden patio. There is ample floor space here for a choice of layout and potential dining table whilst an under-stairs cupboard provides a brilliant storage solution currently housing the tumble dryer. Heading to the first floor you will find all three bedrooms coming separately off the landing with handy built in storage cupboard and family bathroom offering a three piece bathroom suite towards the front of the property with wood effect flooring part, tiled surround and wall mounted radiator. The larger of the bedrooms occupies a rear facing aspect with carpeted flooring, and offers potential to fit permanent wardrobes behind the door whilst also benefiting from the use of an en-suite shower room complete with wood effect flooring and low level radiator. The second largest bedroom comes towards the front of the home again with carpeted flooring underfoot. This room offers space for a large double bed and additional storage solutions while the smaller of the bedrooms comes directly at the top of the stairs with bespoke fitted double wardrobes occupying the space. This could make an ideal dressing room, nursery or study if wished and would also make the perfect single bedroom if you were to remove the wardrobes.

FIND US

Postcode : NR8 5FF

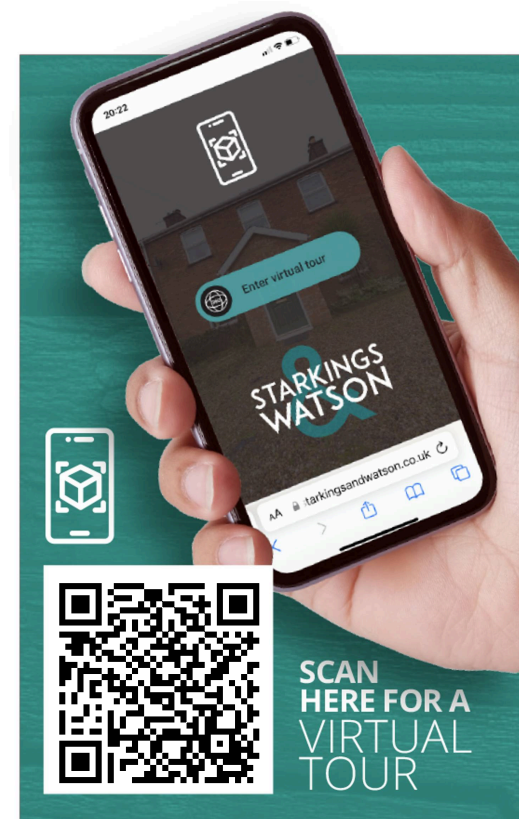
What3Words : ///thrashing.fishnet.images

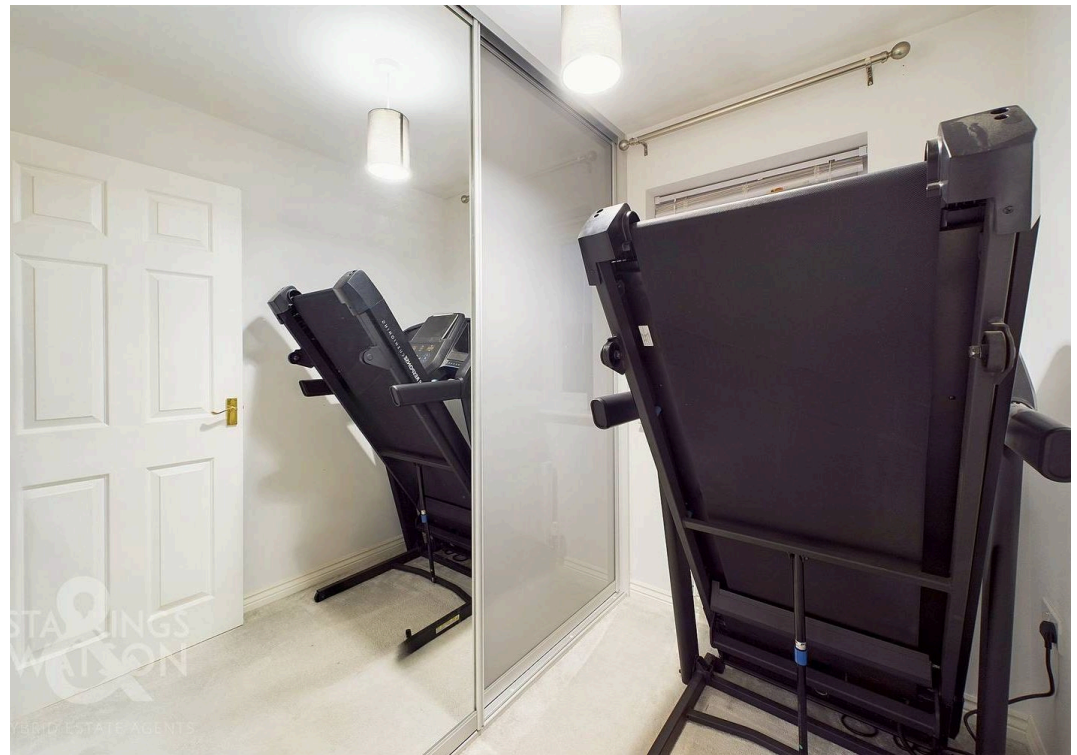
VIRTUAL TOUR

View our virtual tour for a full 360 degree of the interior of the property.

AGENTS NOTE

The agents have been made aware that while this property is freehold there is a service charge paid annually of approximately £100 for maintenance and management of the communal spaces on the development.



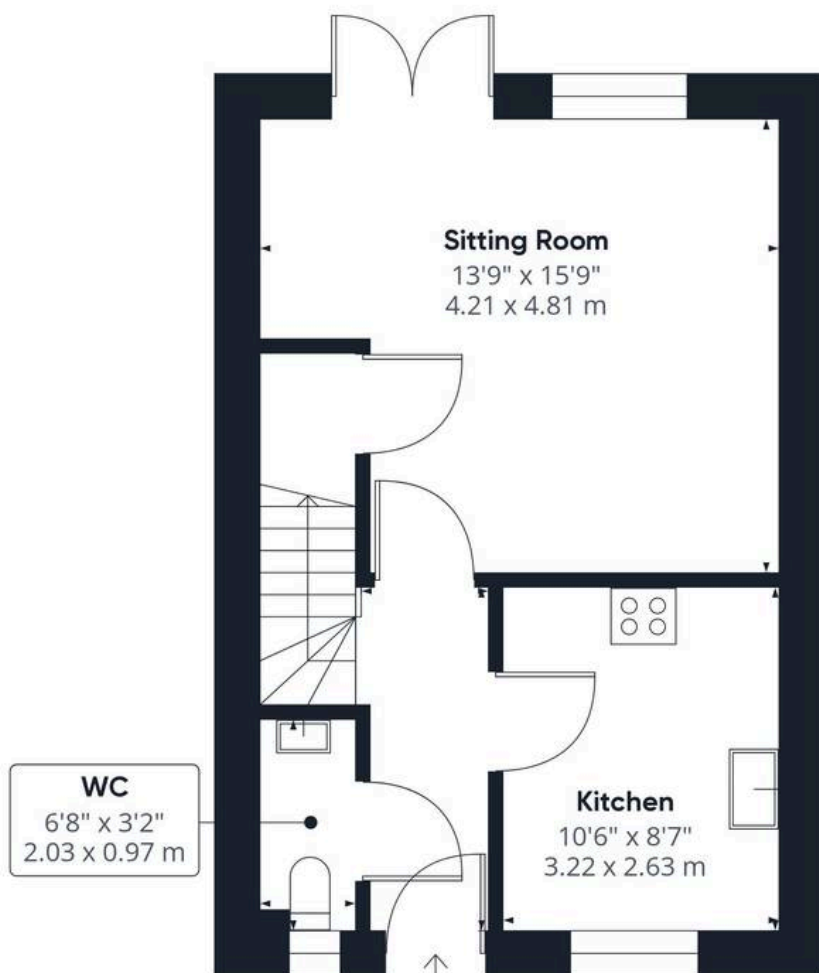




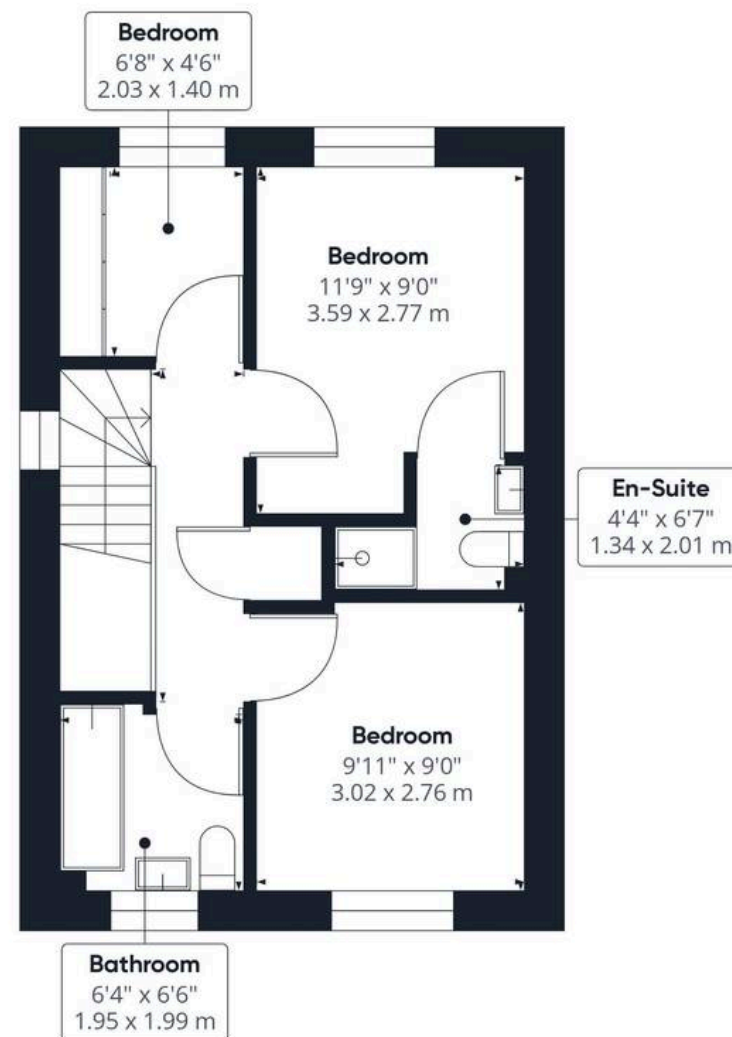
THE GREAT OUTDOORS

Externally the rear garden is fully enclosed on all sides with timber fencing and an access gate leading you directly to the courtyard where two allocated parking spaces can be found. The rest of the garden is occupied by a flagstone patio seating area immediately to the rear, while the rest of the garden is laid to lawn with colourful planting borders running to the edges of the property.





Ground Floor



Floor 1

Approximate total area⁽¹⁾

721.84 ft²
67.06 m²

(1) Excluding balconies and terraces

While every attempt has been made to ensure accuracy, all measurements are approximate, not to scale. This floor plan is for illustrative purposes only.

Calculations are based on RICS IPMS 3C standard.

GIRAFFE 360



Starkings & Watson Hybrid Estate Agents

196 Norwich Road, Costessey - NR5 0EX

01603 336446 • costessey@starkingsandwatson.co.uk • starkingsandwatson.co.uk/

Disclaimer: Whilst every care has been taken to prepare these sales particulars, they are for guidance purposes only. All measurements are approximate and are for general guidance purposes only and whilst every care has been taken to ensure their accuracy, they should not be relied upon and potential buyers are advised to recheck the measurements.