



20 The Paddocks, Ramsbury
£1,750 pcm

m^cfarlane
property.com



20 The Paddocks

Ramsbury, Marlborough

Step into the lap of luxury with this exquisite 4-bedroom detached family home that exudes charm and sophistication. Nestled in a picturesque setting, this stunning property offers a perfect blend of modern convenience.

Stepping inside, you are greeted by a spacious and tastefully decorated living space that is sure to impress even the most discerning renter. The airy layout is designed to create a seamless flow between rooms, offering both privacy and connectivity for all family members.

The kitchen, is equipped with appliances and countertops. The adjacent dining area is perfect for hosting.

The property boasts four generously proportioned double bedrooms, each offering a tranquil retreat at the end of a long day. The master suite is a haven of relaxation, featuring an en-suite bathroom and ample closet space, ensuring both comfort and convenience.

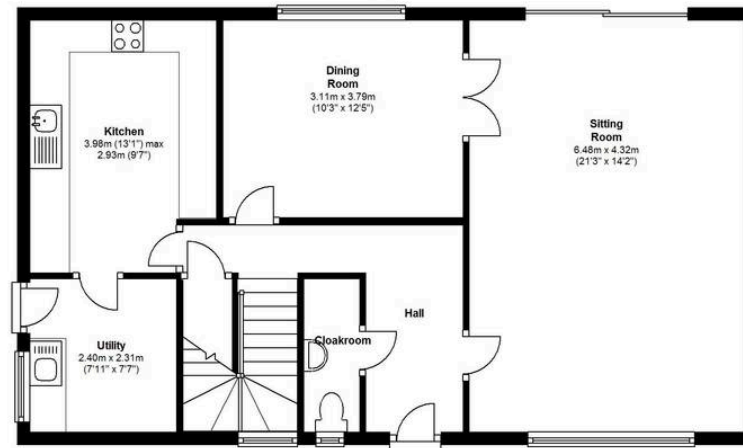
Whether used as a guest room, home office, or personal sanctuary, each bedroom is thoughtfully designed to cater to your individual needs.

For added convenience, the property comes complete with a detached double garage, providing ample space for parking and storage. The gas-fired central heating system ensures your utmost comfort, keeping you warm and cosy throughout the year.



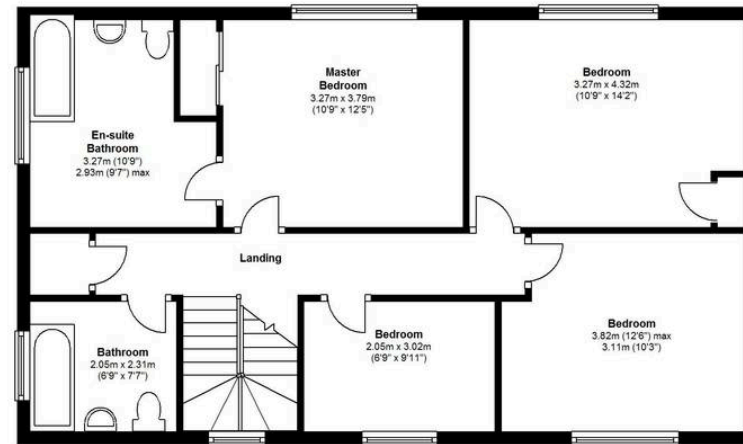
Ground Floor

Approx. 72.8 sq. metres (783.4 sq. feet)



First Floor

Approx. 72.8 sq. metres (783.9 sq. feet)



Total area: approx. 145.6 sq. metres (1567.3 sq. feet)

This floorplan is to be used as guidance only. The accuracy of these plans cannot be verified.
Plan produced using PlanUp.

McFarlane Sales & Lettings

McFarlane Sales & Letting, 106 High Street – SN8 1LT

01672 514380 • marlborough@mcfarlaneproperty.com • www.mcfarlaneproperty.com/

mcfarlane
property.com