





Hiltons Estates present this larger than average home located off of Southall Green! An ideal location for commuters being in the central of amenities such as transport links, places of worship, shops and schools. The property boasts two spacious lounge's, fully-fitted kitchen, family bathroom and ample storage facilities on the ground floor. The rear garden is over 40ft, ideal for storage and further home usage. The first floor leads to Three double-bedrooms and bathroom to accommodate all family needs or an investors dream benefitting from a high rental yield. Viewings Highly Recommended!

Freehold Mid Terrace 3/4 Bedroom property in Southall, UB2.

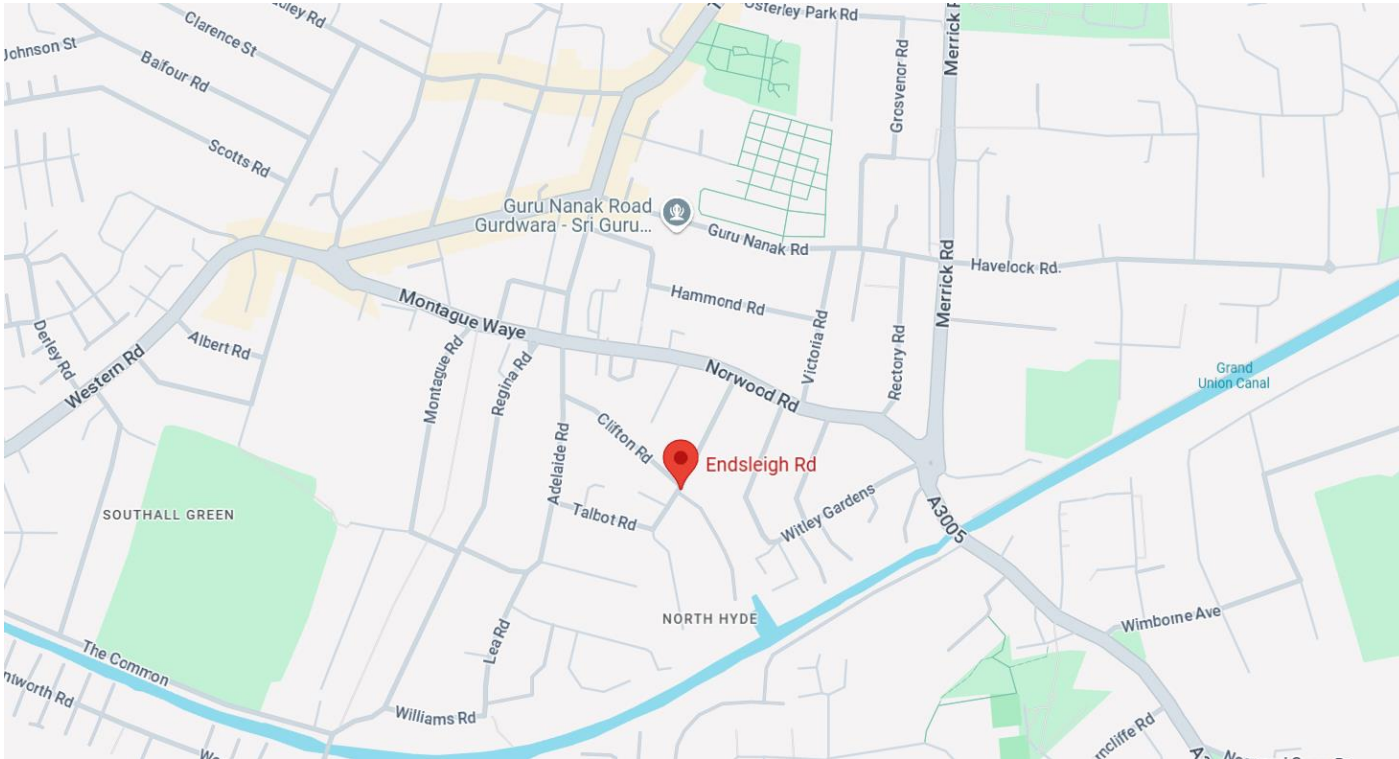
Large Rear Garden

Close by to Local Amenities, Schools, Shops and Southall Station!

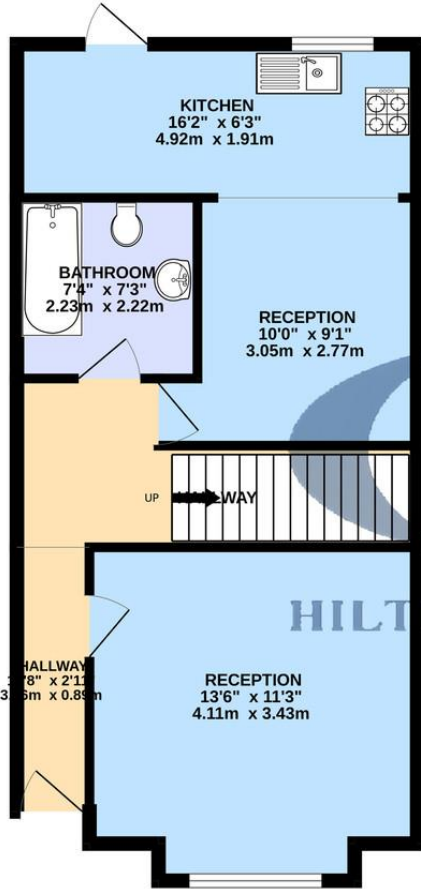
A brilliant Opportunity for families, Commuters and INVESTORS!!!

Call now to book viewings!!!

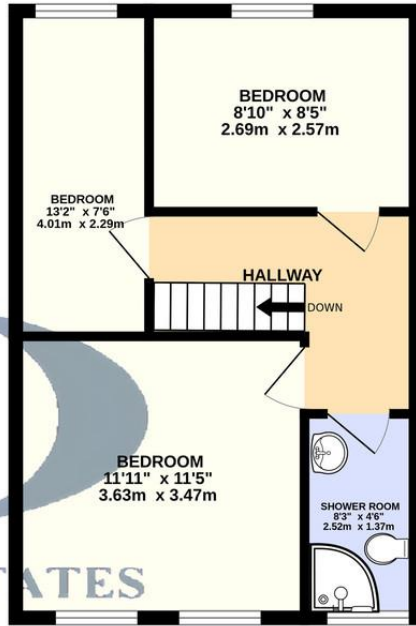




GROUND FLOOR
530 sq.ft. (49.3 sq.m.) approx.



1ST FLOOR
397 sq.ft. (36.9 sq.m.) approx.



Score	Energy rating	Current	Potential
92+	A		
81-91	B		86 B
69-80	C		
55-68	D	65 D	
39-54	E		
21-38	F		
1-20	G		

TOTAL FLOOR AREA : 927 sq.ft. (86.1 sq.m.) approx.

Whilst every attempt has been made to ensure the accuracy of the floorplan contained here, measurements of doors, windows, rooms and any other items are approximate and no responsibility is taken for any error, omission or mis-statement. This plan is for illustrative purposes only and should be used as such by any prospective purchaser. The services, systems and appliances shown have not been tested and no guarantee as to their operability or efficiency can be given.
Made with Metropix ©2024

Hiltons Estates, 137 Western Road
Southall, UB2 5HN

www.hiltons-estates.com
email: harvin@hiltons-estates.com
0208 867 9555 / 07961 527301

Agents Note: Whilst every care has been taken to prepare these sales particulars, they are for guidance purposes only. All measurements are approximate are for general guidance purposes only and whilst every care has been taken to ensure their accuracy, they should not be relied upon and potential buyers are advised to recheck the measurements.