



27 Keith Gardens, Broxburn

Offers Over £152,000



27 Keith Gardens

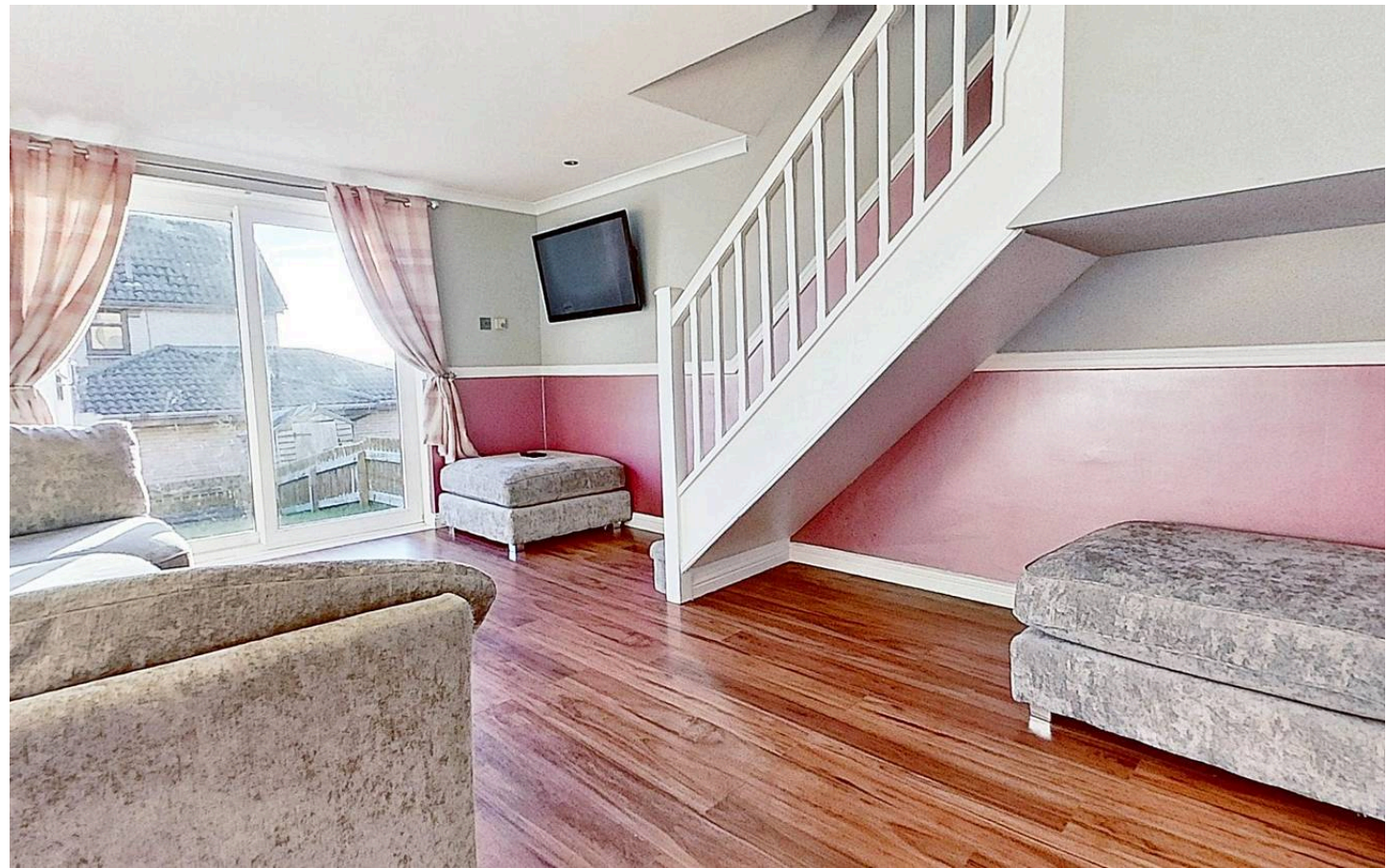
Broxburn

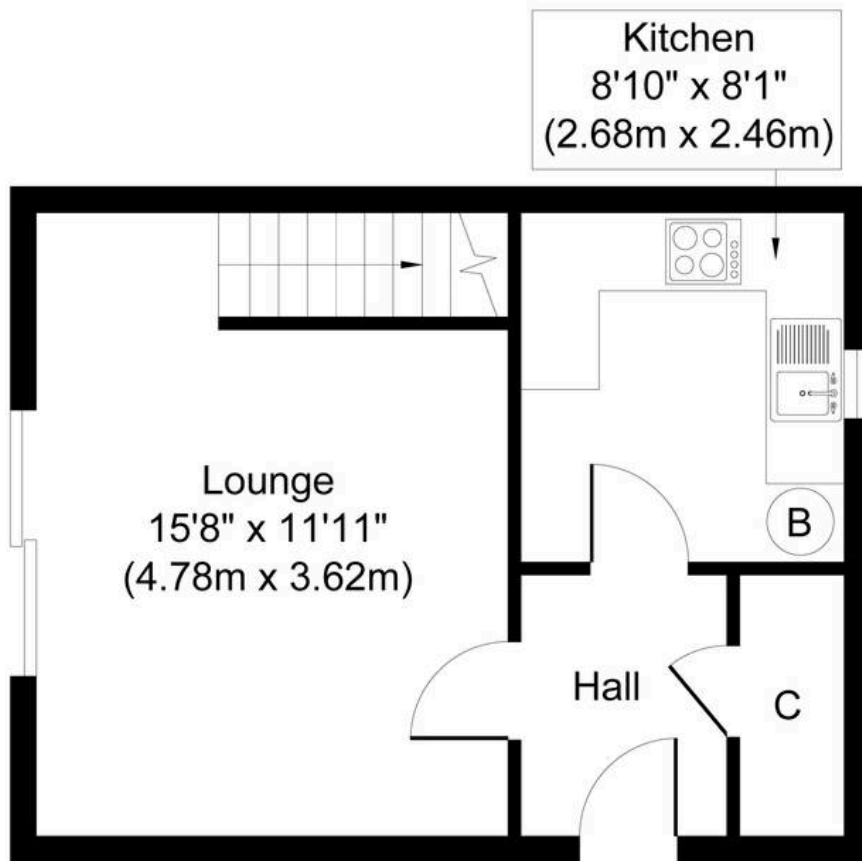
Charming 2-bed end terrace, chain-free. Ideal for first-time buyers or families. Light-filled lounge, double bedrooms, enclosed garden. Close to woodland, amenities. Comfortable, convenient, serene living.

Council Tax band: C

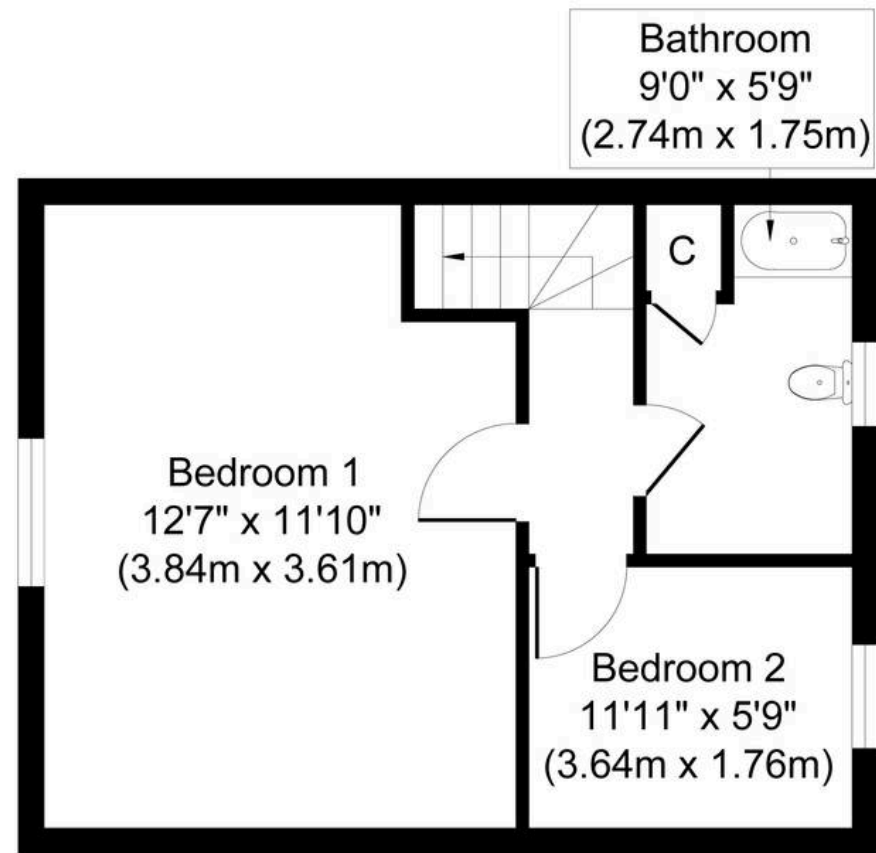
Tenure: Freehold

- Two Bedroom End Terrace House
- Chain Free Purchase
- Ideal For A First Time Buyer Or Family
- Spacious Lounge With French Doors
- Move In Condition
- Located Within A Popular Residential Area
- Allocated Parking Space
- Fully Enclosed Rear Garden
- Close To Protected Woodland Walks
- Near To Local Amenities





Ground Floor
Approximate Floor Area
319 sq. ft
(29.63 sq. m)



First Floor
Approximate Floor Area
319 sq. ft
(29.63 sq. m)

Whilst every attempt has been made to ensure the accuracy of the floor plan contained here, measurements of doors, windows, rooms and any other items are approximate and no responsibility is taken for any error, omission, or mis-statement. The measurements should not be relied upon for valuation, transaction and/or funding purposes. This plan is for illustrative purposes only and should be used as such by any prospective purchaser or tenant. The services, systems and appliances shown have not been tested and no guarantee as to their operability or efficiency can be given.



KnightBain Estate Agents

Knightbain, 4 Greendykes Road, Broxburn - EH52 5AG

01506 852000

info@knightbain.co.uk

www.knightbain.co.uk/

