



Darlington Street, Bathwick, Bath BA2 4EA

To Let - £1,250 pcm



Furnished one double bedroom apartment on the second floor of a classic Georgian townhouse. An ideal opportunity to live in style in this prime central Bath location (about 0.8 miles from the train station and less to the city centre).



### Property features

Electric heating | Kitchen with ceramic hob, oven, fridge, freezer and washing machine | Shower over the bath | Permit parking for residents - Zone 1 (annual payment required)

For local shopping there is a Tesco Express a short way up Bathwick Hill or McColls on nearby Bathwick Street. Two of the finest parks in Bath (Henrietta Park and Sydney Gardens) are a few minutes' walk from Darlington Street.

### Council Tax

Band B:



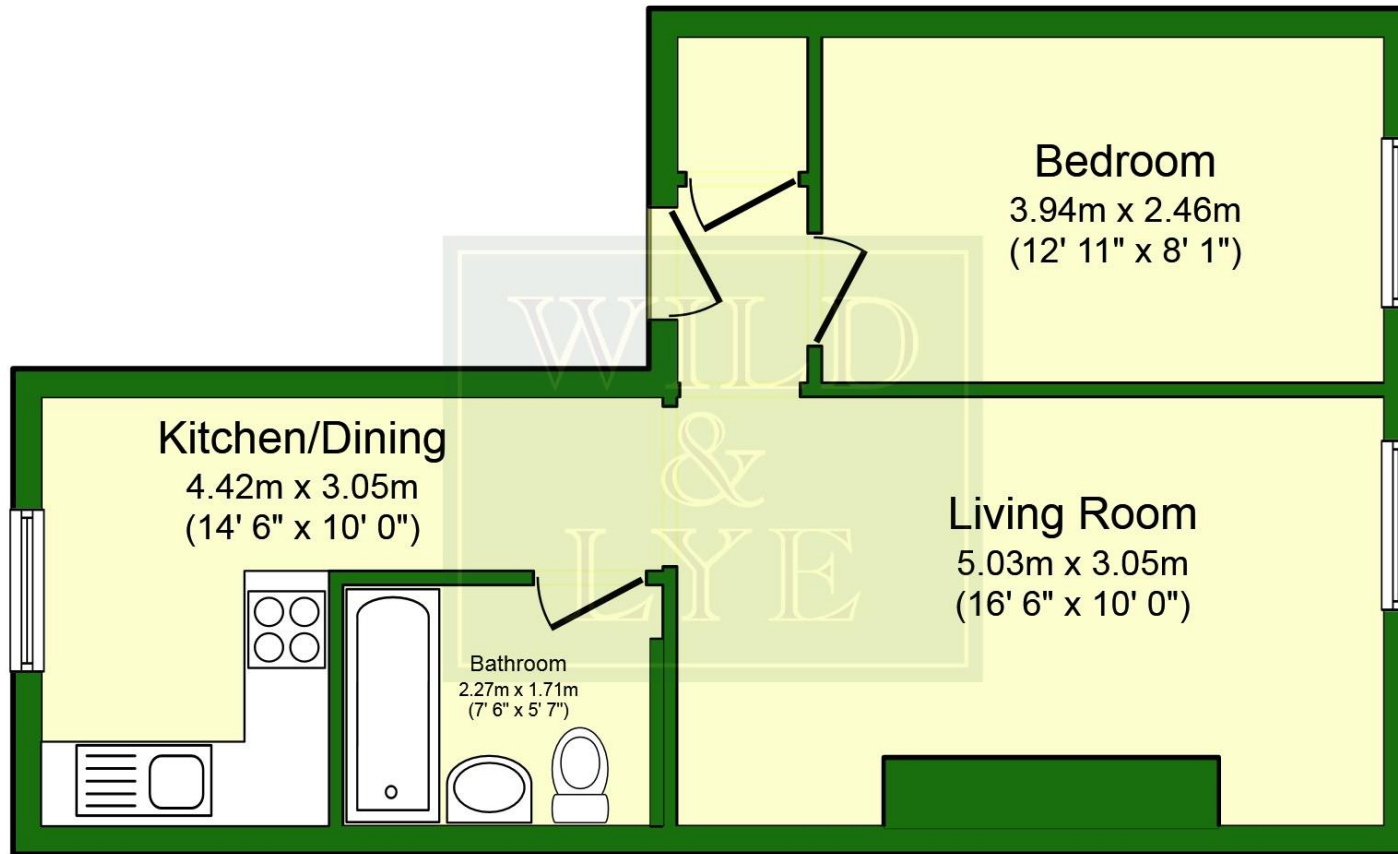
Arrange a viewing

01225 443322

[www.wildandlye.com](http://www.wildandlye.com)

**Important Notice** 1. Particulars: These particulars are not an offer or contract, nor part of one. You should not rely on statements by Wild & Lye in the particulars or by word of mouth or in writing ("information") as being factually accurate about the property, its condition or its value. Neither Wild & Lye nor any joint agent has any authority to make any representations about the property, and accordingly any information given is entirely without responsibility on the part of the agents, seller(s) or lessor(s). 2. Photos etc: The photographs show only certain parts of the property as they appeared at the time they were taken. Areas, measurements and distances given are approximate only. 3. Regulations etc: Any reference to alterations to, or use of, any part of the property does not mean that any necessary planning, building regulations or other consent has been obtained. A buyer or lessee must find out by inspection or in other ways that these matters have been properly dealt with and that all information is correct.

Score	Energy rating	Current	Potential
92+	A		
81-91	B		
69-80	C		
55-68	D	61   D	67   D
39-54	E		
21-38	F		
1-20	G		



**Ref: 2520**

Total floor area 42.0 sq. m. (452 sq. ft.) approx

This Floor Plan is for illustration purposes only and may not be representative of the property. The positions are approximate. © PropertyBOX

are approximate. Unauthorized reproduction



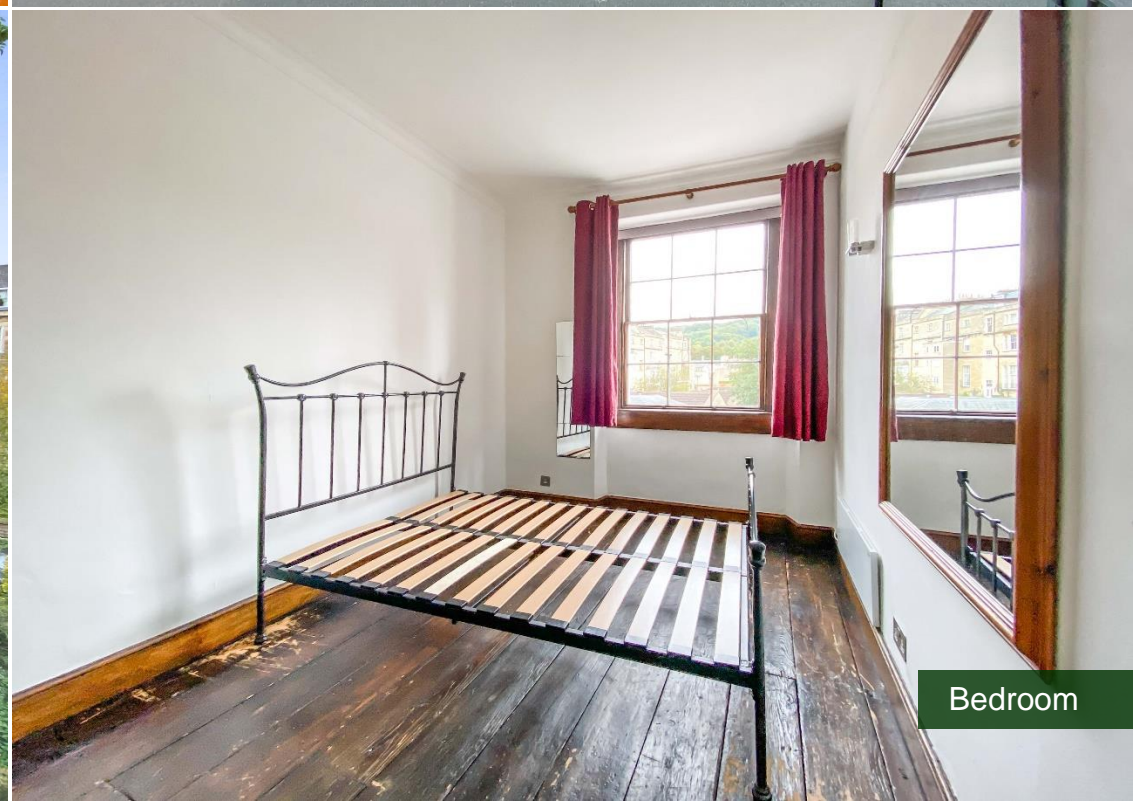
Kitchen/Dining



Front view



Rear view



Bedroom