







29 Snowberry Crescent

 3  4  2 

- ▶ Enjoy living in a quiet leafy neighbourhood
- ▶ Move straight in to this beautifully presented home
- ▶ Relax with the family in the secluded walled garden
- ▶ Park your vehicles off the road and on the driveway
- ▶ Well situated for easy access to either Emsworth or Havant
- ▶ Room for all the family to relax in the spacious downstairs space
- ▶ Take the train from Havant to London, Brighton and Portsmouth
- ▶ Relax in the conservatory with views over the rear gardens

A stunning four bedroom family home situated in a quiet crescent.

The owners have totally modernised this home returning it to show home standard. Already extended to provide outstanding downstairs accommodation. Three reception rooms and a conservatory downstairs will accommodate the largest family. A cosy separate sitting room for the adults, a large and sociable kitchen dining room for the kids and a family room for the teenagers.

Upstairs there is a large main bedroom suite with en suite shower. Three more double bedrooms and a spacious family bathroom .

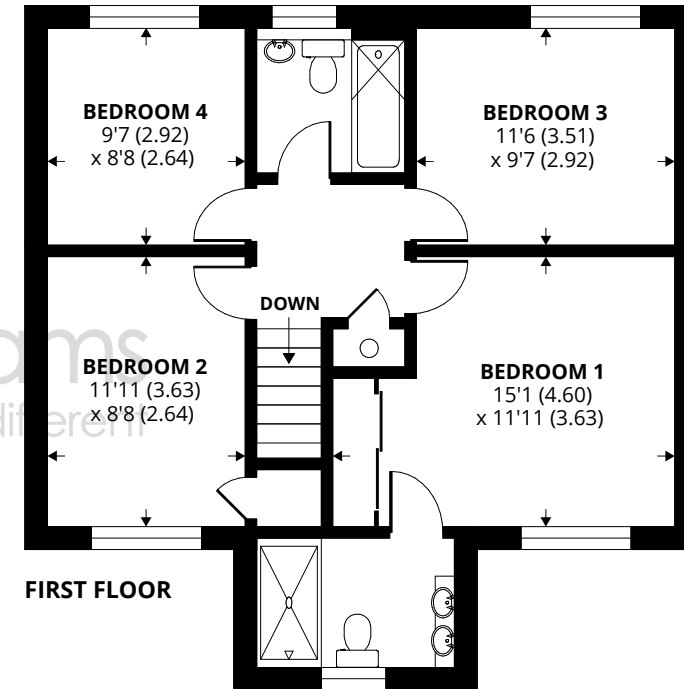
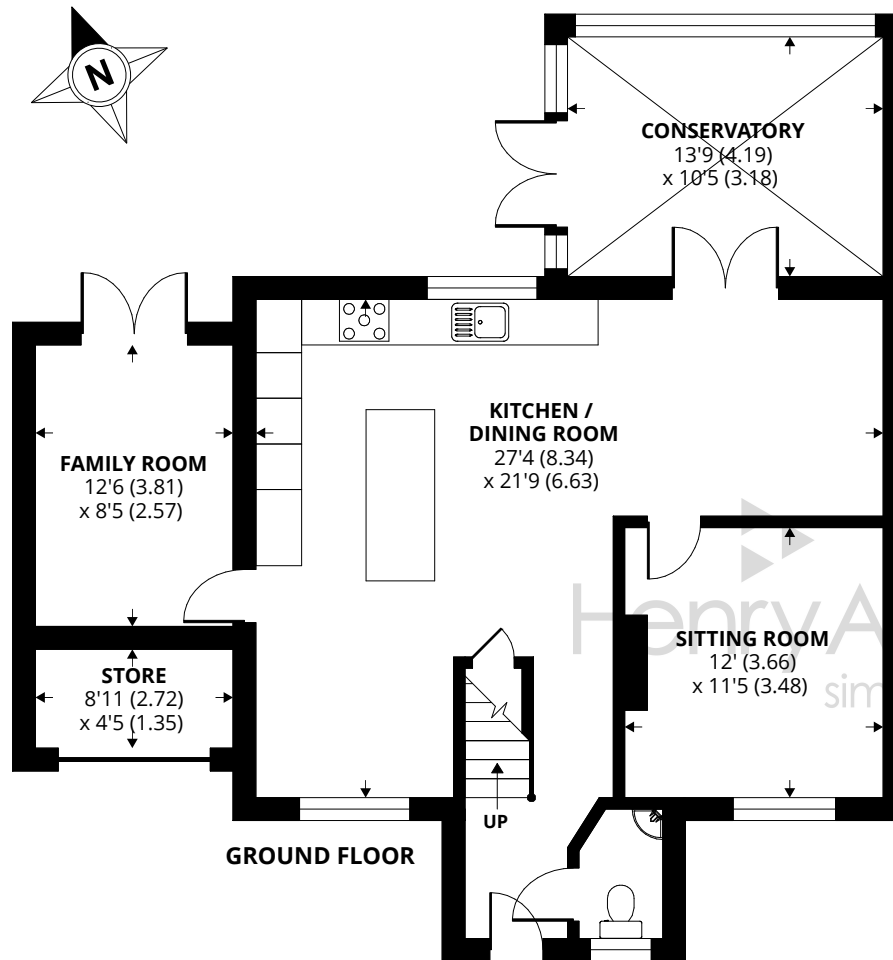
Outside the rear garden is secluded and unusually for a house of its age, walled. The garage has been part converted to a family room and some storage space has been retained. The driveway will accommodate several vehicles.

Council Tax Band - E









29 Snowberry Crescent, Havant

Approximate Area = 1585 sq ft / 147.2 sq m

Store = 37 sq ft / 3.4 sq m

Total = 1622 sq ft / 150.6 sq m

For identification only - Not to scale



Floor plan produced in accordance with RICS Property Measurement Standards incorporating International Property Measurement Standards (IPMS2 Residential). © nche.com 2022. Produced for Henry Adams. REF: 889990

Agents Note - Our particulars are for guidance only and are intended to give a fair overall summary of the property. They do not form part of any contract or offer, and should not be relied upon as a statement or representation of fact. Measurements, areas and distances are approximate only. Photographs may include lifestyle shots and pictures of local views. No undertaking is given as to the structural condition of the property, or any necessary consents or the operating ability or efficiency of any service, system or appliance. Please ask if you would like further information, especially before you travel to the property.

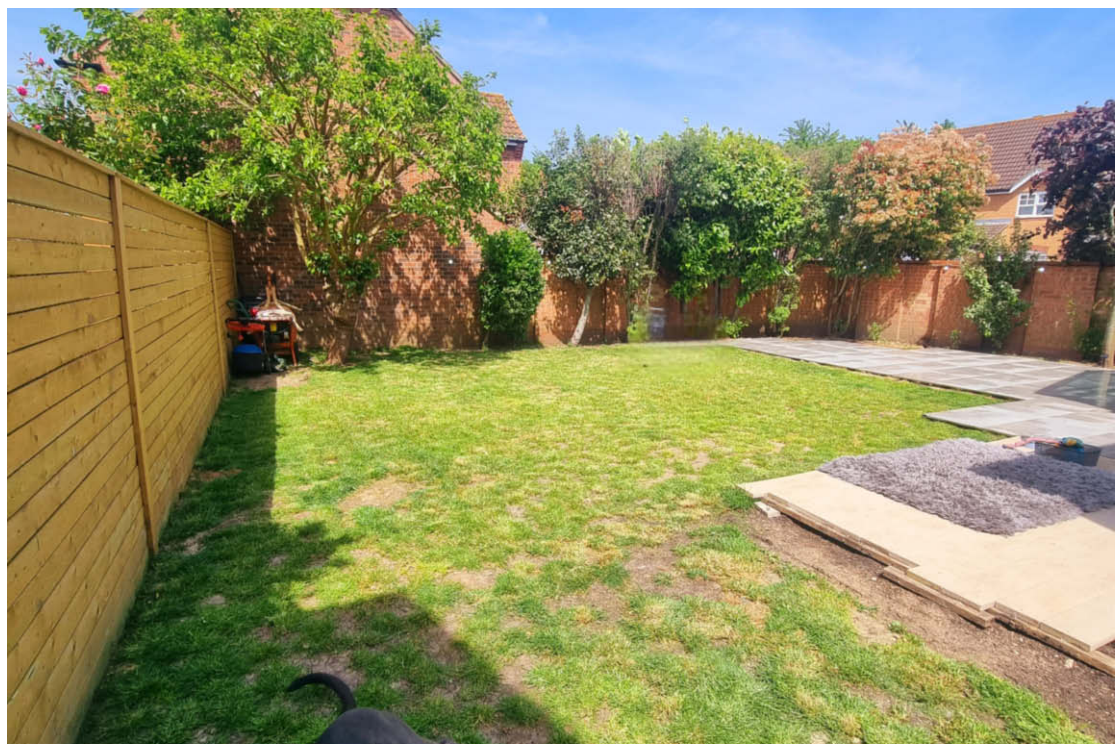
Situation

29 Snowberry Crescent is located in a quiet position in Denvilles, which is between Emsworth and Havant. Nearby Havant has excellent day to day shopping facilities including a Waitrose, and a main line railway station, with services to London Waterloo. The picturesque village of Westbourne lies to the east with a church, doctors surgery and a locally renowned bakery whilst Emsworth, also nearby, on the upper reaches of Chichester Harbour with access to excellent coastal walks, is a bustling village with shops, pubs and restaurants, By road there are links to Chichester, Portsmouth and Petersfield via the A27, M27 and A3.

Directions

From our office, proceed north out of Emsworth along the Horndean Road, past the recreation ground, turning next left into Southleigh Road. Take the second turning right into Rowan Road and immediately right into Snowberry Crescent. Number 29 will be found along on the right hand side.

16th December 2024





THE PARKES
14TH JULY 2023