



MILE



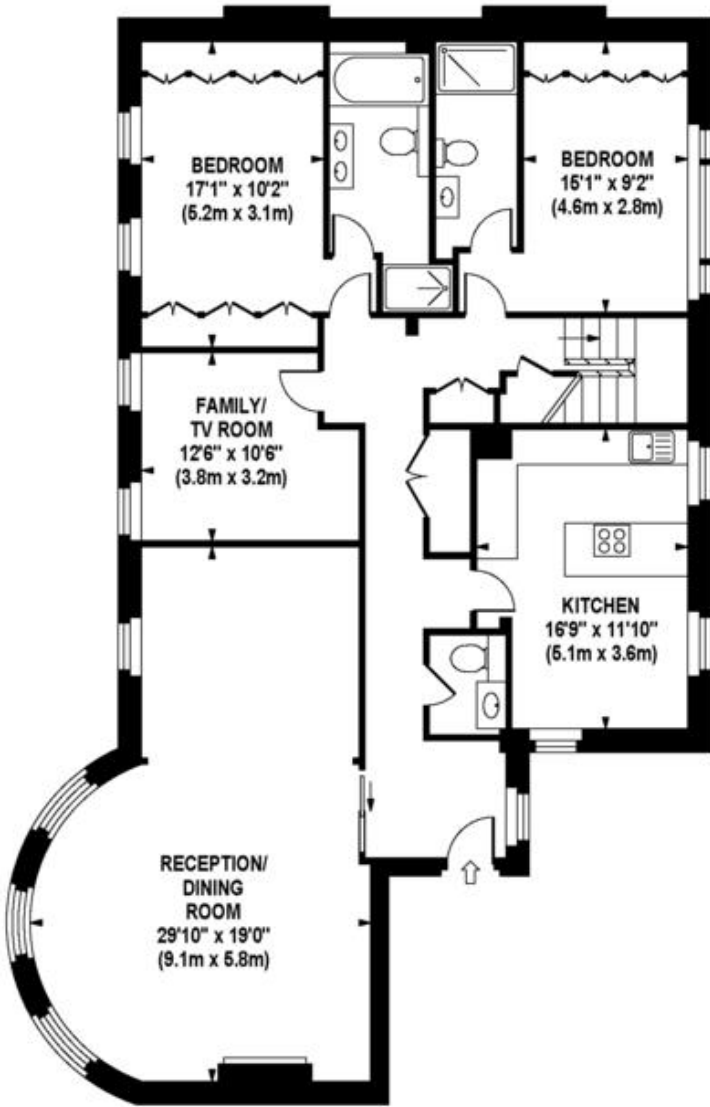
Arkwright Road, Hampstead
£15,578 pcm

Mile are delighted to bring this stunning 4 bedroom flat in Hampstead to the market

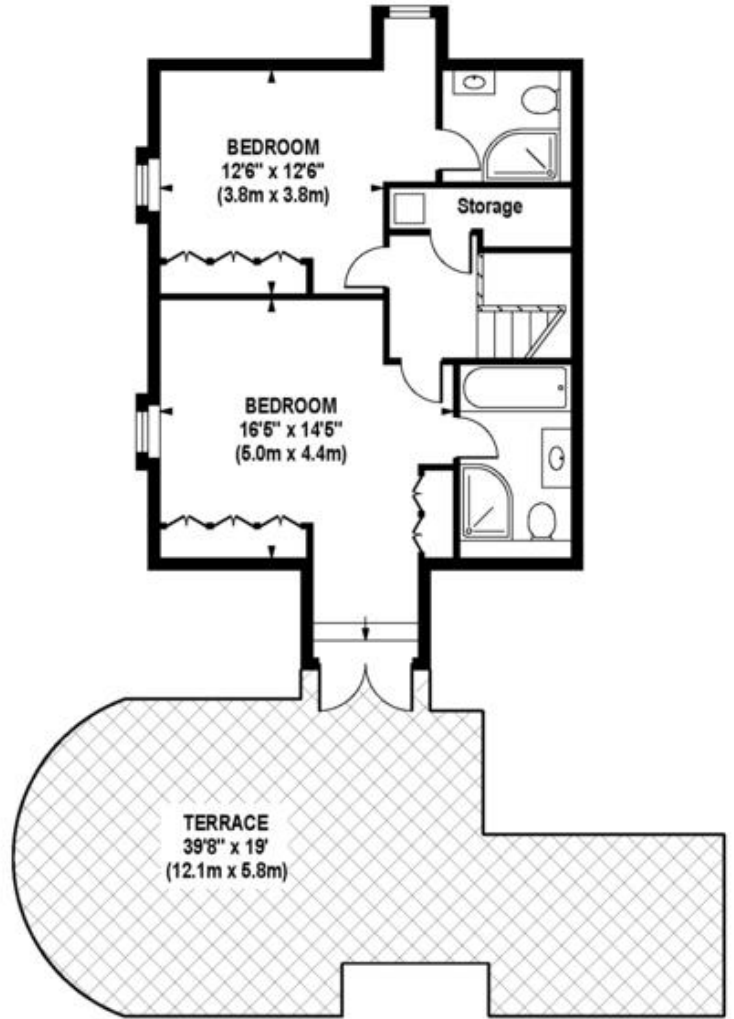
- 4/5 Bedrooms
- Available January 2nd
- Private Terrace
- Off Street Parking
- Council Tax Band H
- Communal Gardens
- Porter
- Furnished Optional

ARKWRIGHT ROAD

Approximate Gross Internal Area 2225 sq ft / 206.7 sq m



**THIRD FLOOR
GROSS INTERNAL
FLOOR AREA 1558 SQ FT**



**FOURTH FLOOR
GROSS INTERNAL
FLOOR AREA 667 SQ FT**

Although every attempt has been made to ensure accuracy, all measurements are approximate. The floor plan's for illustrative purposes only and not to scale. Measured in accordance to RICS standards.

DE-PHOTOGRAPHY.NET

MONEY LAUNDERING REGULATIONS 2003: Intending purchasers will be asked to produce identification documentation at a later stage and we would ask for your co-operation in order that there will be no delay in agreeing the sale.

General: While we endeavour to make our sales particulars fair, accurate and reliable, they are only a general guide to the property and, accordingly, if there is any point which is of particular importance to you, please contact the office and we will be pleased to check the position for you, especially if you are contemplating travelling some distance to view the property.

Measurements: These approximate room sizes are only intended as general guidance. You must verify the dimensions carefully before ordering carpets or any built-in furniture.

Services: Please note we have not tested the services or any of the equipment or appliances in this property, accordingly we strongly advise prospective buyers to commission their own survey or service reports before finalising their offer to purchase.