



DEL COBB

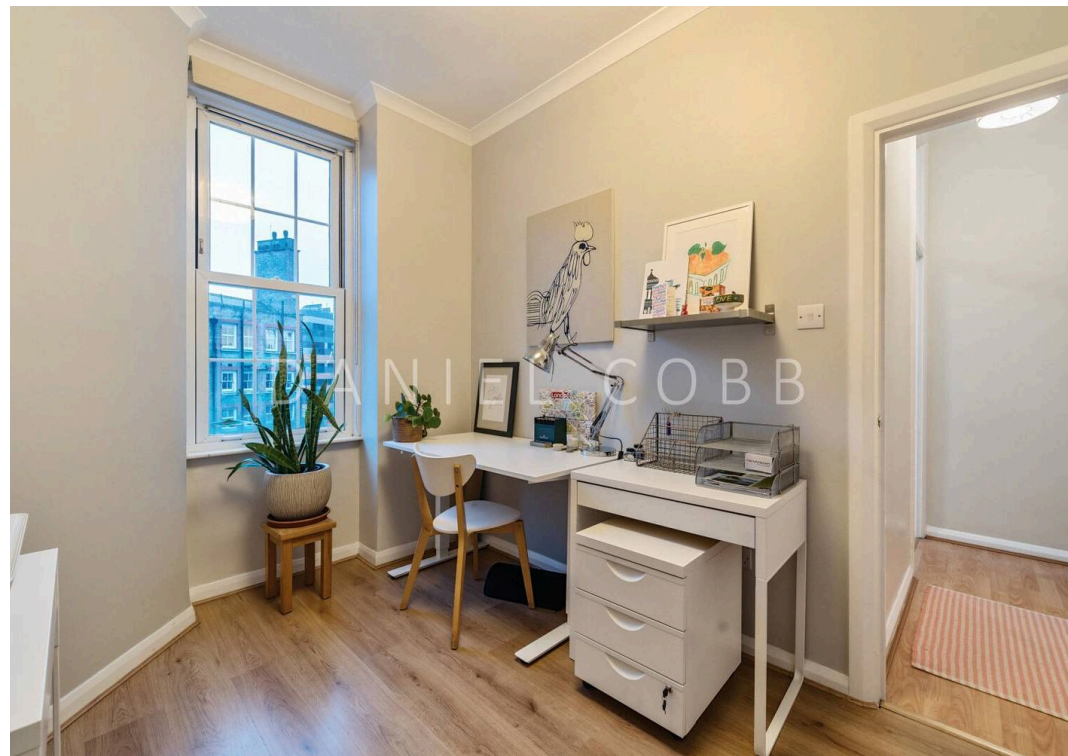
Devon Mansions Tooley Street, SE1

£525,000











## Devon Mansions Tooley Street, London

A well presented two bedroom apartment in excellent condition on the second floor of this popular mansion block and situated close to Tower Bridge, London Bridge station and Bermondsey Street.

Council Tax band: C

Tenure: Leasehold

EPC Energy Efficiency Rating: C

EPC Environmental Impact Rating: C

- Located opposite Shad Thames and close to Tower Bridge
- Walking distance to The City
- Excellent amenities in the immediate area
- Easy access to London Bridge Station
- Light and bright interior
- Kitchen/dining room
- Excellent storage
- No onward chain
- Popular well maintained mansion block
- 2nd floor ( with lift access)







## Daniel Cobb

Daniel Cobb Estate Agents, 82-84 Bermondsey Street - SE1 3UD

020 7357 0026 • londonbridge@danielcobb.co.uk • www.danielcobb.co.uk/